

MAGELLANO 27M

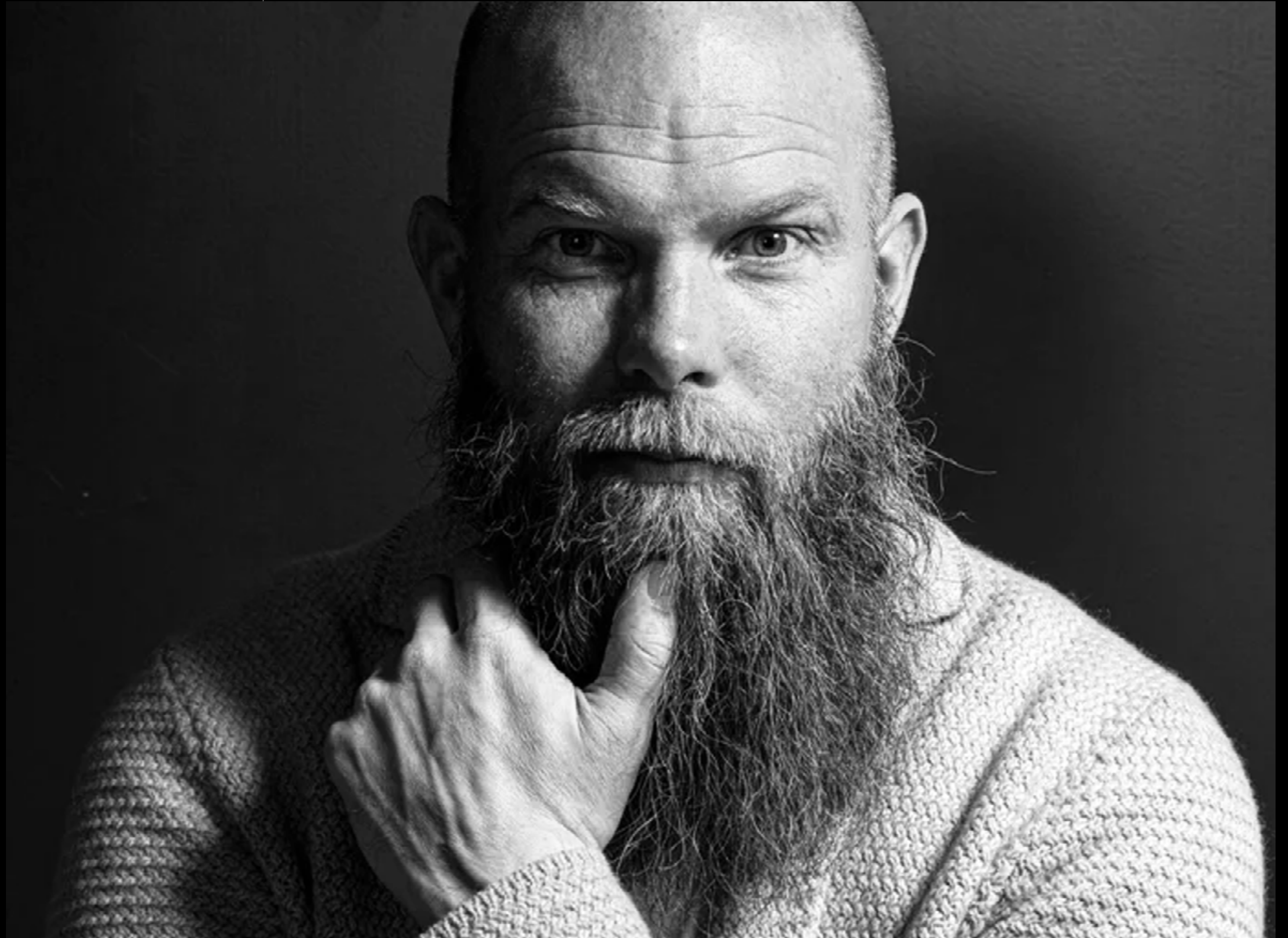


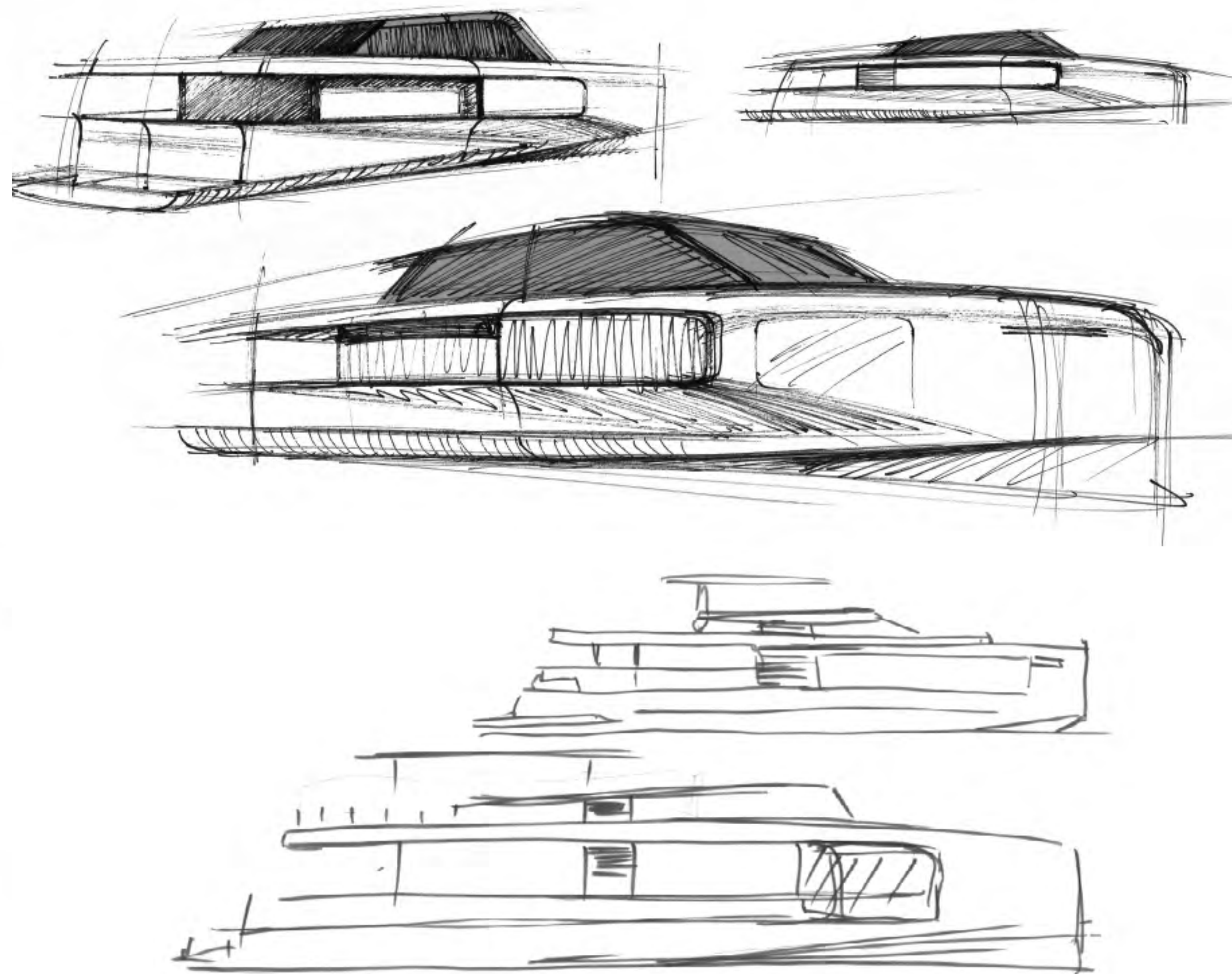
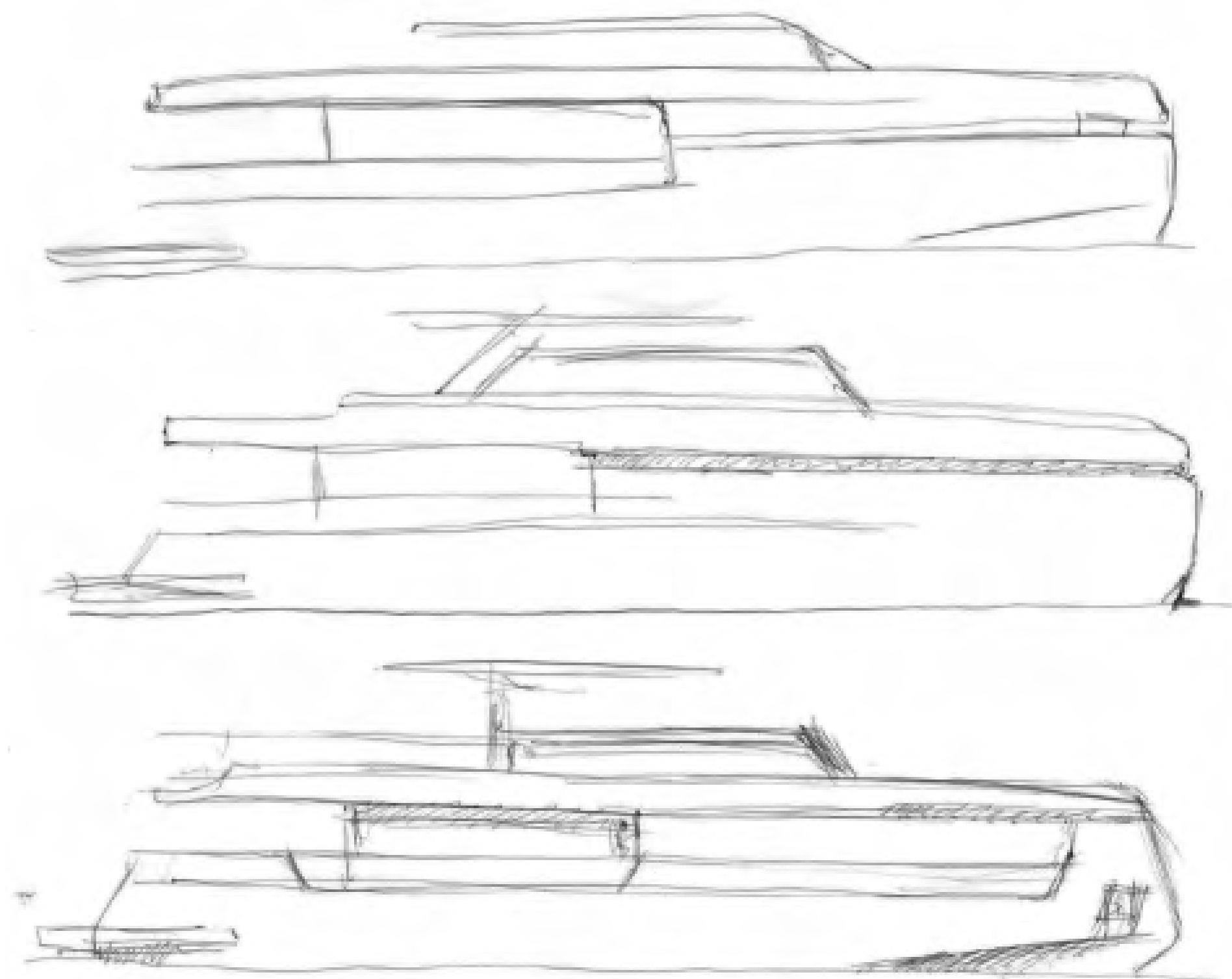
01

MAGELLANO 27M,
ICON OF THE NEW
VOYAGER ERA

JARKKO JÄMSÉN

Exterior designer Jarkko Jämsén envisions the Magellano 27M as a living artwork, not made to dominate nature, but to exist in harmony with it. Its form, stripped of excess, becomes a mirror where sea, sky, and light endlessly shape her surfaces. The architecture navigates between precision and fluidity: an industrial loop draws a line along the yacht's profile, embodying this dual character. One side reveals the exacting geometry of engineering straight edges, measured fillets, technical rigor. The other opens to reflection, clean, pure surfaces where curves catch light and echo the sea.







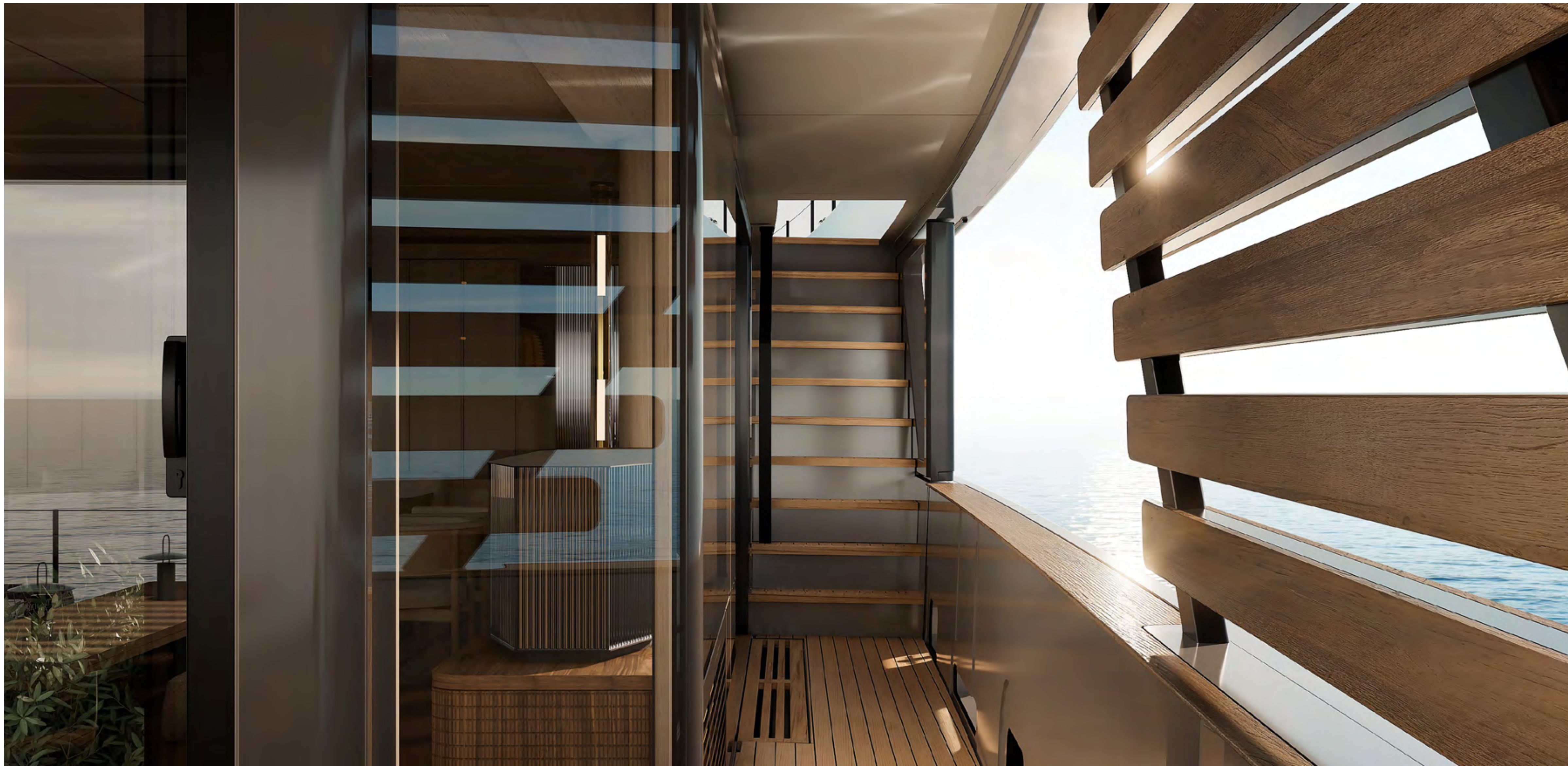
This is not merely a new superyacht,
nor simply a new Voyager.
This is a philosophy of voyage itself,
where freedom blends with serenity at sea,
as the long-range strength of the crossover
encounters an intimate, soulful interior
design style.







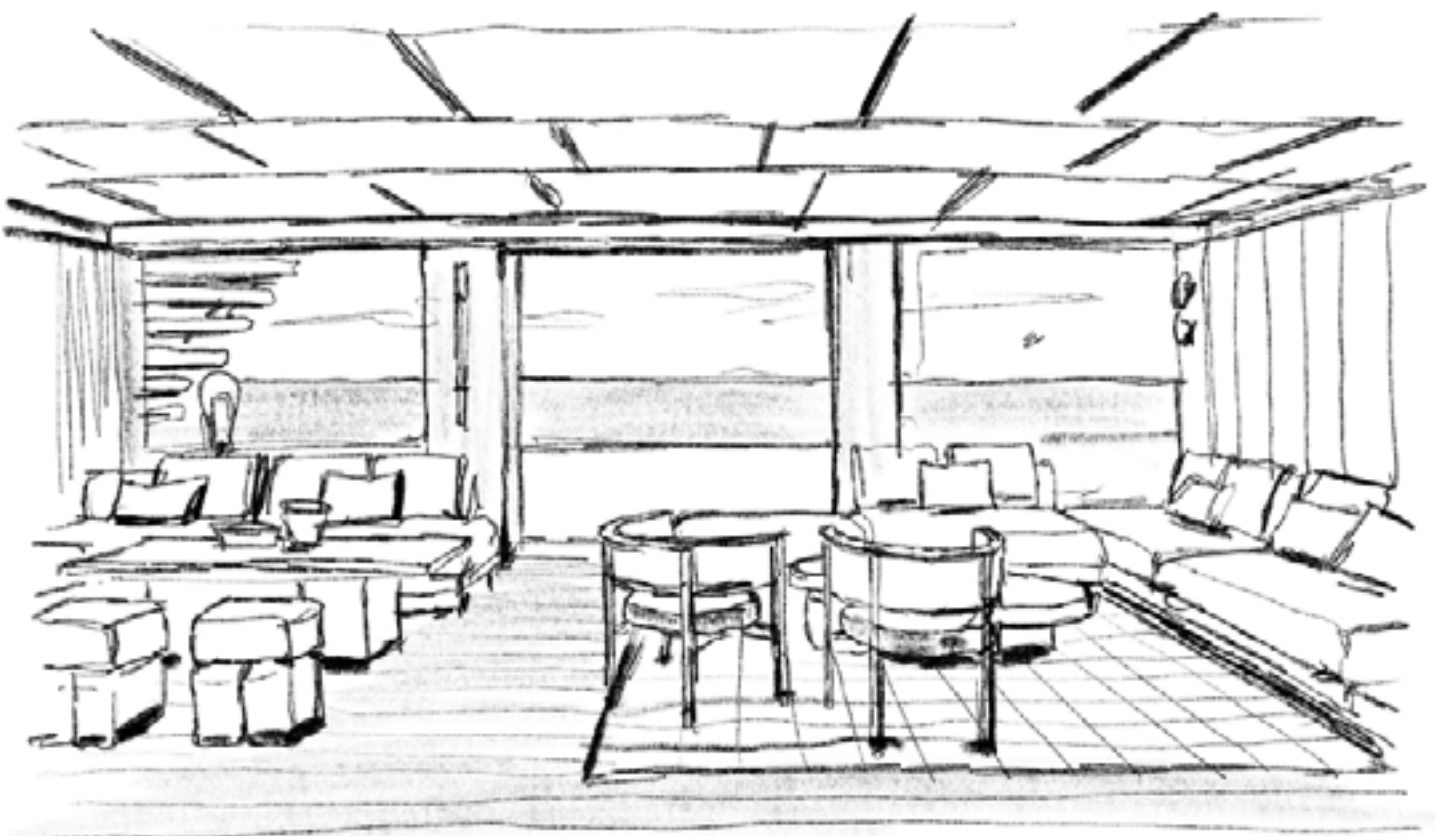
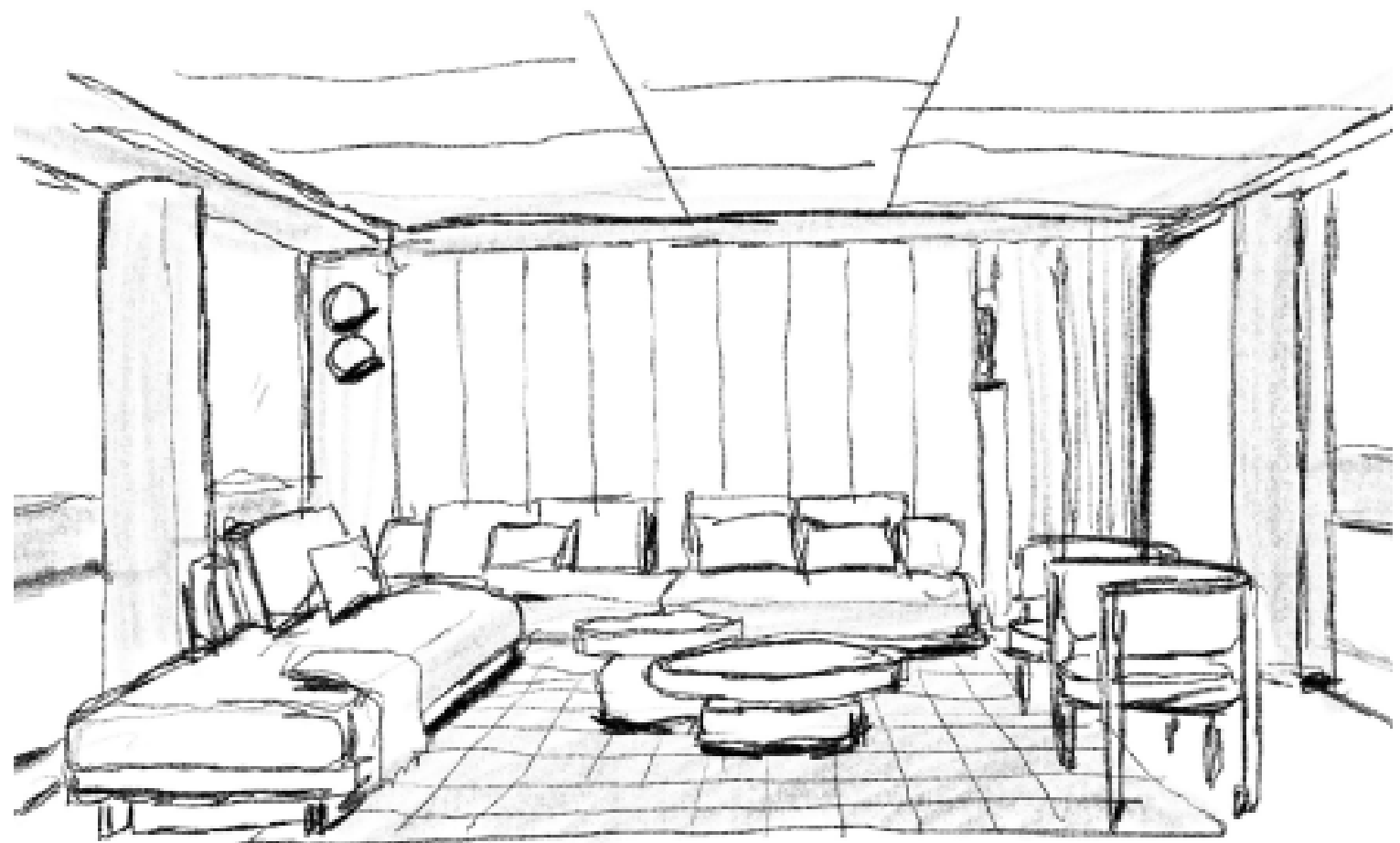
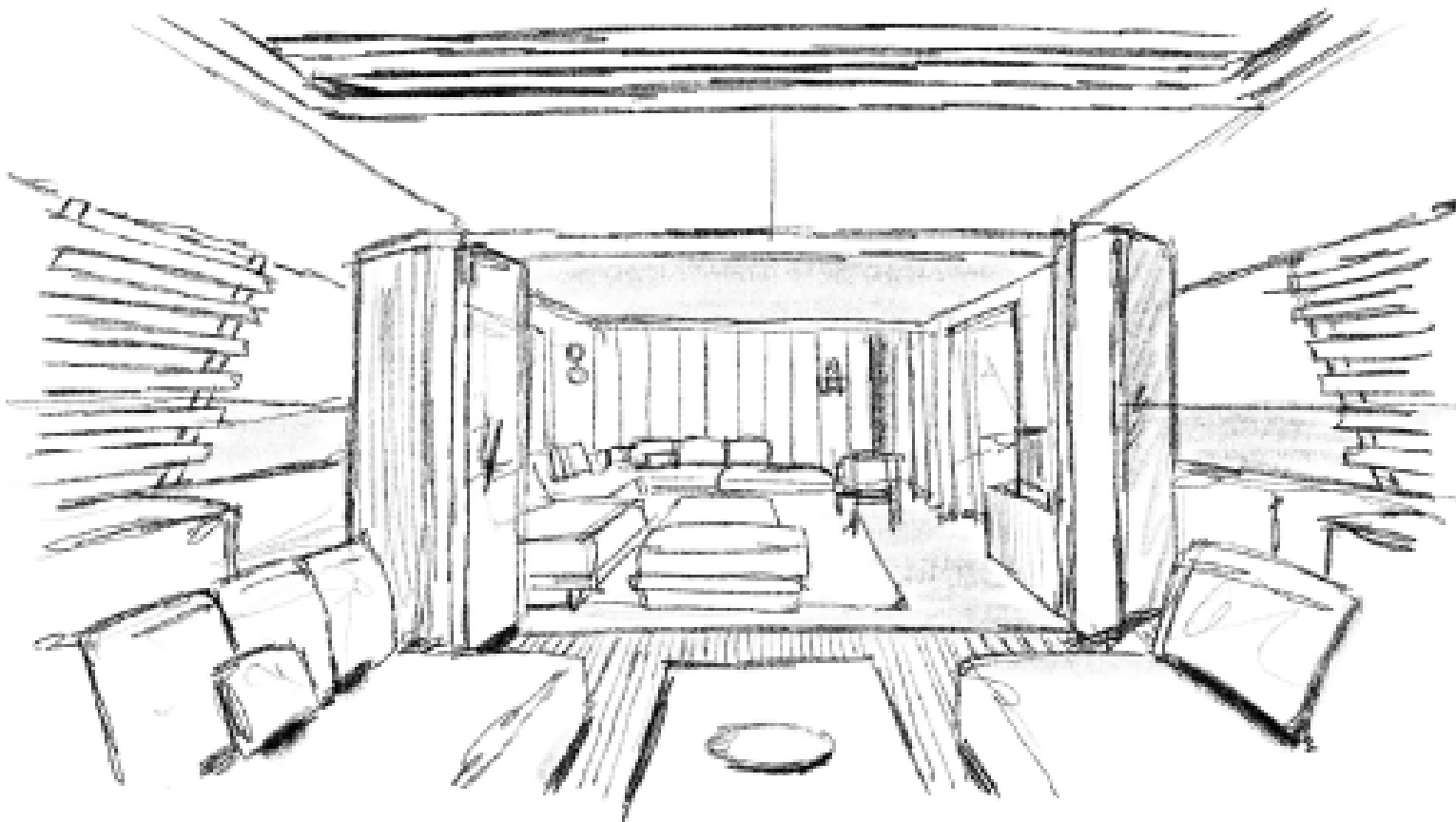
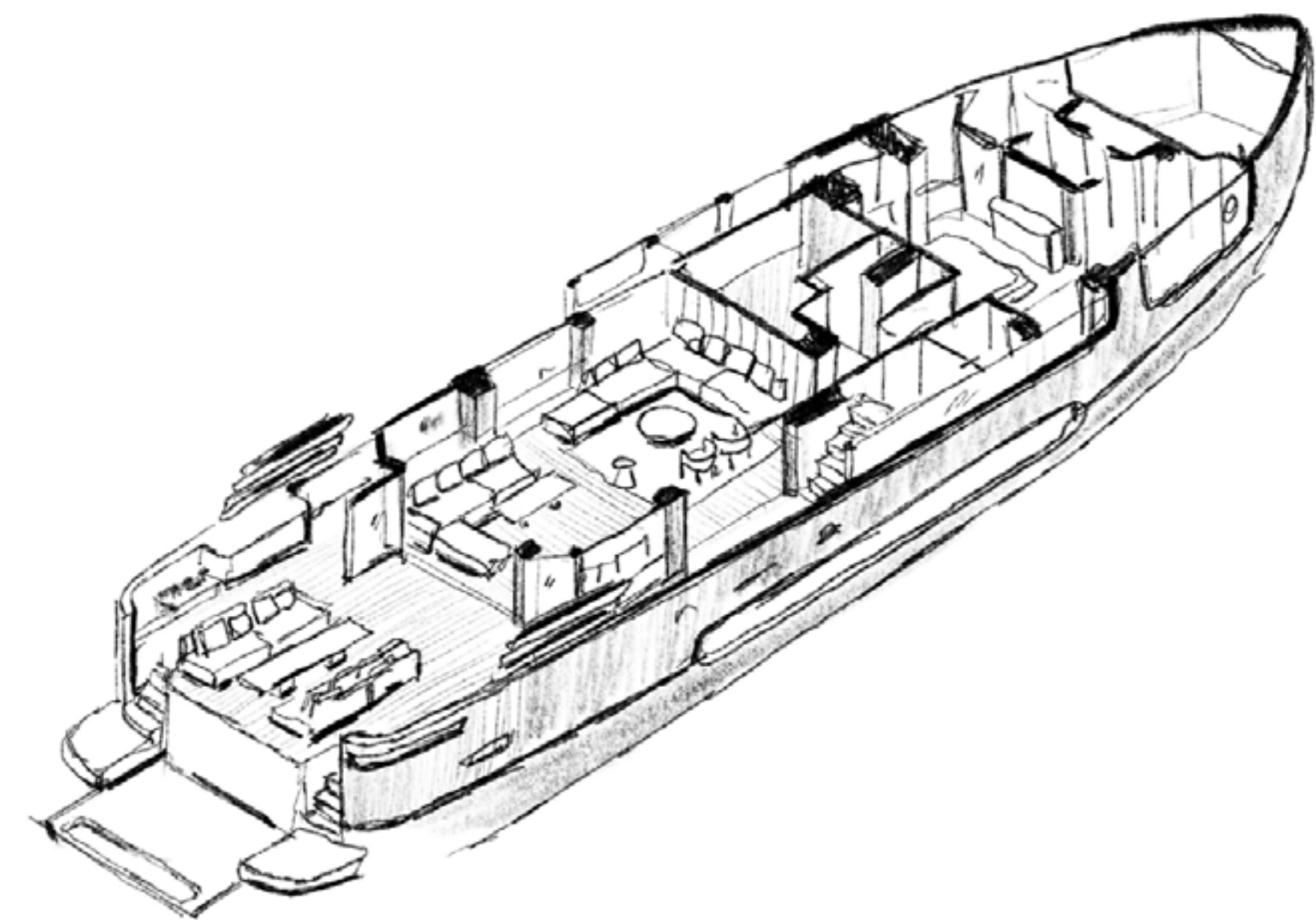




AMDL CIRCLE & MICHELE DE LUCCHI

A sculptural design approach, a deep fascination with wood in all its forms, and a consistent commitment to humanistic architecture have defined this design philosophy for over two decades. In the interiors of the Magellano 27M, this vision takes on a narrative dimension, rooted in a universal human truth: since the dawn of time, humankind has moved across lands and seas to explore, to connect, and to shape its future.







THE CONCEPT OF A LOGGIA

At the heart of the project lies the main deck, conceived as a vast loggia over the sea: a space deeply glazed, immersed in light, and articulated by wooden architectural elements that evoke mediterranean pergolas and patios. Natural light is treated as a material in its own right.







CULTURAL CROSS- POLLINATION

Metal and wooden details complete the project with a sophisticated accent, where nature's essence meets contemporary precision in an architecture of elegance, depth, and soul.





02

MAGELLANO 27M

SPEC SHEET

GENERAL CHARACTERISTICS

LENGTH OVERALL	26,2 m	85’ 11”
LENGTH OVERALL WITH EXTENDED PLATFORM	27,38 m	89’ 10”
BEAM MAX	6,85 m	22’ 6”
ENGINES	2 x MAN 1400 MHP 2 x MAN 1650 MHP	
MAXIMUM SPEED	up to 21 kn up to 23-24 kn	
CRUISING SPEED	up to 16-18 kn	
FUEL CAPACITY	10500 l	2774,1 US Gal
WATER CAPACITY	2200 l	581,2 US Gal
CABINS	5 + 2 crew	
BERTHS	10 + 3 crew	
HEAD COMPARTMENTS	6 + 2 crew	
BUILDING MATERIAL	VTR/GRP	
EXTERIOR DESIGNER	Jarkko Jämsén - Navia Design	
INTERIOR DESIGNER	Michele De Lucchi & AMDL Circle	
BUILDER	Azimut Yachts	
HULL DESIGN	P.L. AUSONIO Naval Architecture & Azimut R&D Dept.	

Last updated 09.2025
Please consult your dealer for the latest specifications.

UNI ISO 8666
The performance described applies to a vessel with standard configuration (standard equipment installed) and a clean hull, propellers, and rudder. It is also noted that the performance described was recorded under favourable sea and wind conditions (Beaufort scale index 1, Douglas scale index 1); different and worse sea conditions could significantly impact performance.

CE MARK
Given the continual evolution of technology, Azimut | Benetti S.p.A reserves the right to modify the technical specifications on its vessels at any time and without prior notice.

AZIMUT | BENETTI SPA
VIA MARTIN LUTHER KING, 9
10051 AVIGLIANA, TORINO
ITALY

MAGELLANO 27M - RELEASE 09.25

This brochure in no way constitutes a contract of sale for the boatyard's vessels to any person or company. All information contained herein, including but not limited to technical and performance data, illustrations, and drawings, is non-binding and for purposes of illustration only. The information in this brochure refers to the boatyard's standard motoryacht models available as of the date of publication. Technical and descriptive information is valid only to the extent that it pertains to the specific vessel that is the subject of a purchase. Contract terms are valid only to the extent that they are contained in a contract of sale. This document is based on information available at the time of publication. Despite efforts to ensure the greatest possible accuracy, the information contained herein may fail to cover all details, omit technical or commercial changes that may have been made subsequent to publication, describe features that are not present, and fail to envisage all circumstances that might occur. Any illustrations, photographs, diagrams and examples shown in this brochure are included solely for the purposes of illustrating the text. Due to the different features of each vessel, the boatyard assumes no liability for actual use based on the illustrated applications.

