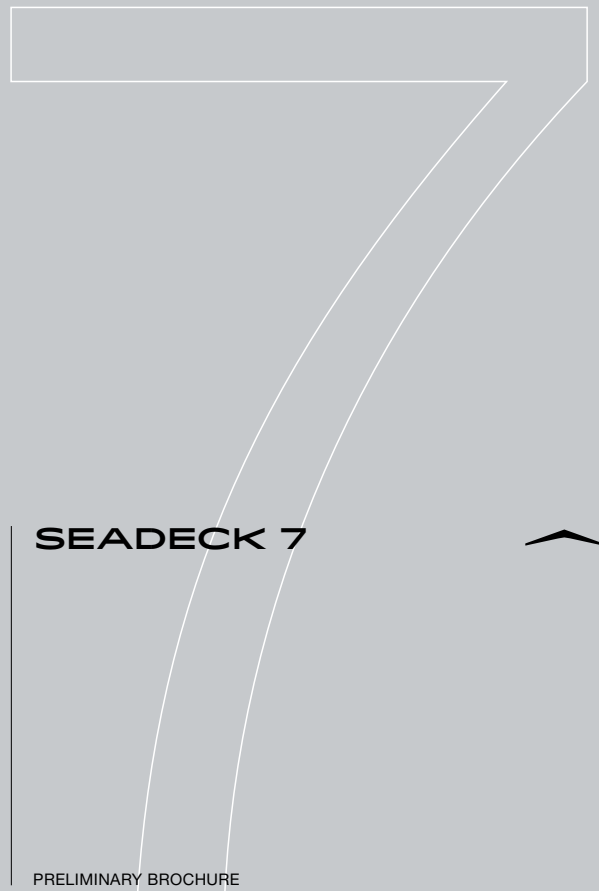


^ZIMUT



SEADECK 7



PRELIMINARY BROCHURE

INDEX

01	THE DESIGN & LIFESTYLE ON BOARD	P04
02	HER MAIN TECHNICAL FEATURES	P25
03	SEADECK 7 SPEC SHEET	P35



A one-of-a-kind beauty, enrapturing,
that steals your breath away, leaving you
speechless. An extraordinary idea as the only
possible pathway, to get to where you want,
to explore, to go beyond.

The freedom of embracing the unknown, that
you know you'll love as a part of your very own
story. A thought that provokes your mind and
then inspires you to aim for the impossible,
making mistakes, yet being brave.

A magic je ne sais quoi that enchants and
intrigues you, moving you to feel more and to
sense uniqueness.

The choice to risk it all, the one that makes you
go for it, to impress yourself and all those who
are worth it.

Welcome to Azimut.

AZIMUT.
DARE TO AMAZE.



01

THE DESIGN & LIFESTYLE ON BOARD



[DISCOVER MORE]



















SEADECK 7



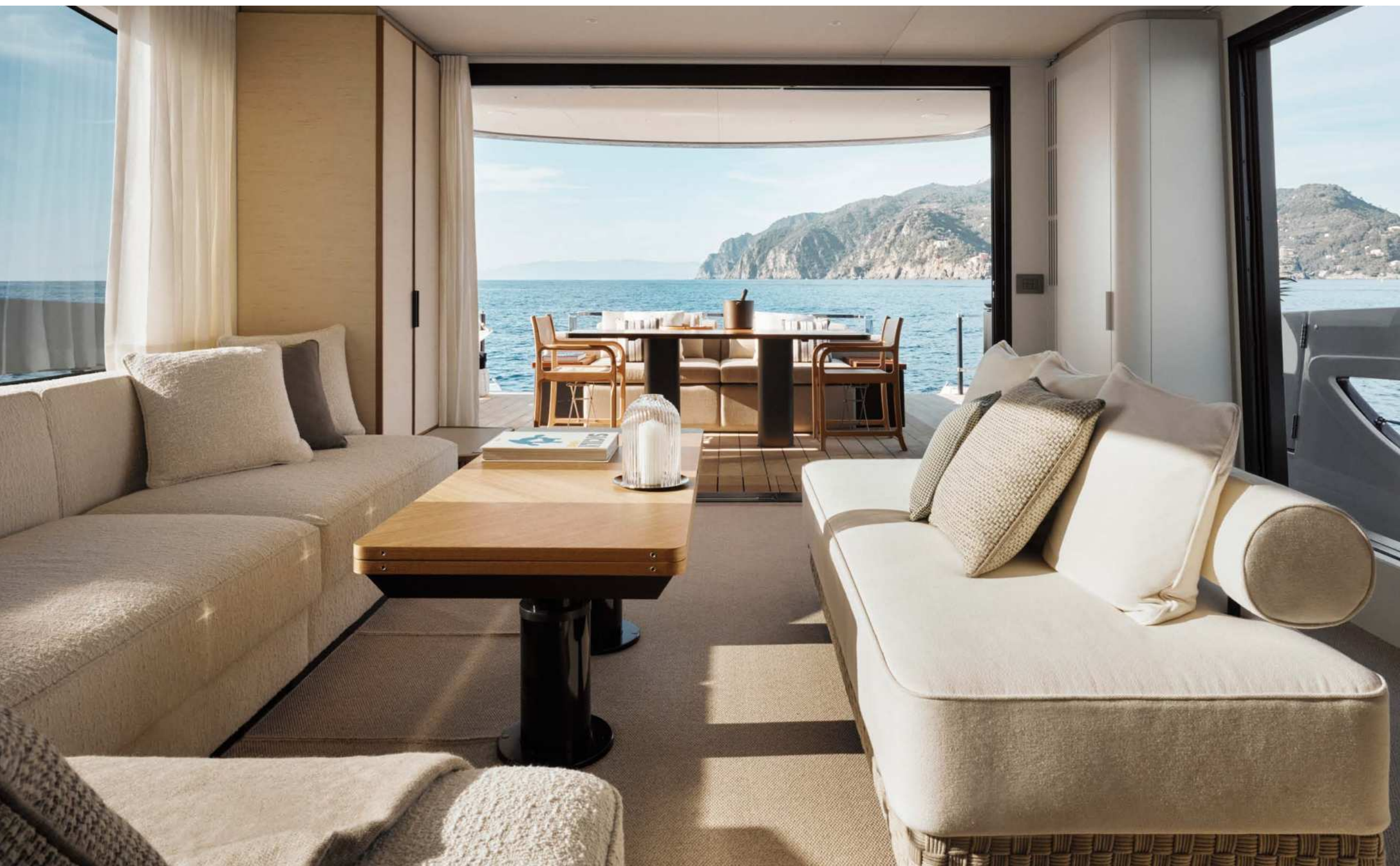
AZIMUT YACHTS























SEADECK 7



AZIMUT YACHTS

02

HER MAIN TECHNICAL FEATURES

The beauty of the Seadeck 7 is not solely a matter of exterior and interior design elements that combine to perfectly play out Azimut's essence. Her beauty is also about discovering the technological advancements and special components that contribute to making her truly unique and highly innovative.



HYBRID PROPULSION

Seadeck is the first family yacht series in the world to be equipped with Volvo's new hybrid-electric pod propulsion system.

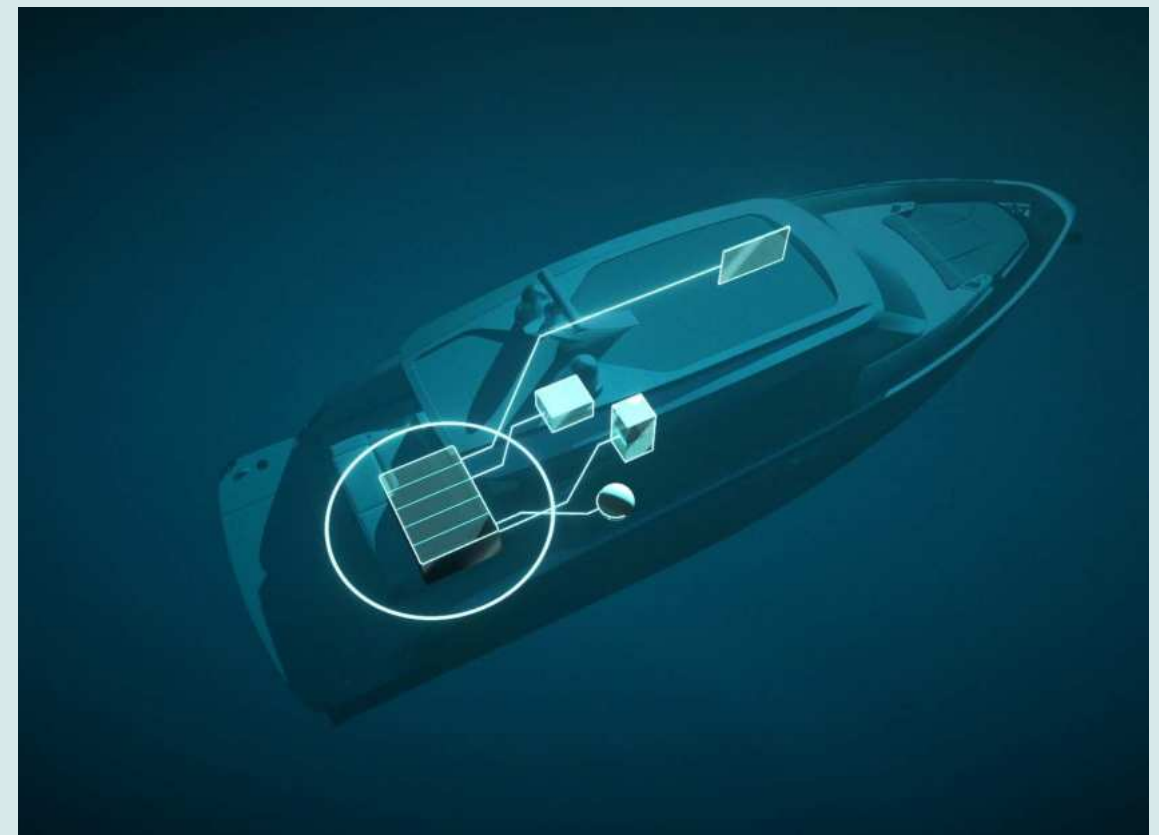
The new propulsion system, synergizing with bow-to-stern optimizations by the shipyard, delivers unparalleled efficiency. In one year of average use by a conscious owner, a reduction in CO₂ emissions of 40% is achievable.

At the same time, guests are able to appreciate an immersive experience of the sea, with reduced engine noise and vibration for quiet or completely silent operation - not only at anchor, using the battery to supply the hotel load, but also for short distance navigation in full electric.



ZERO EMISSION HOTEL MODE

A battery pack can support the yacht's hotel load for up to 4 hours during the day and up to 8 hours at night. Now, it's possible to enjoy the full superyacht experience without the noise, vibration and emissions of the generators, making daytime activities more pleasant and night time relaxation more peaceful. When the ECO mode is active, the system automatically maximizes the duration of the batteries by regulation the loads on board to optimizing consumption.



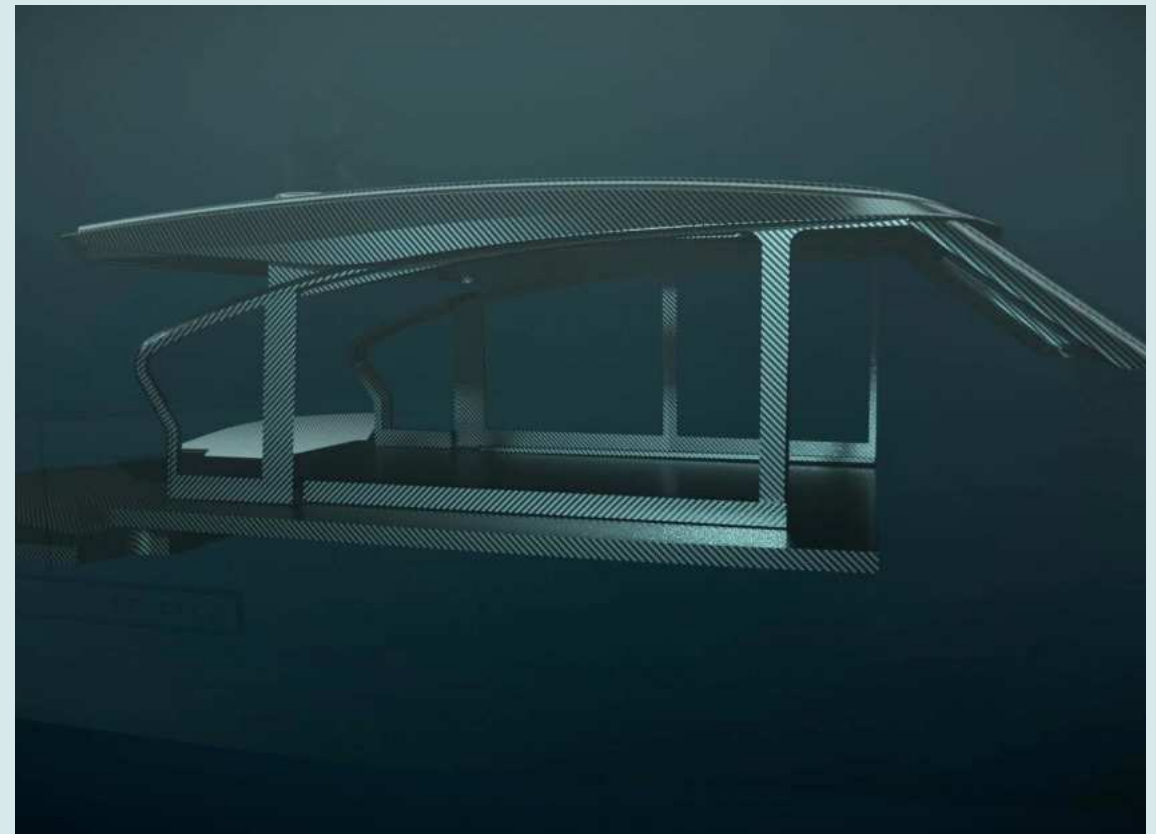
ADVANCED HULL DESIGN

The collaboration between NAMES and Azimut's R&D Department pushes the forefront of innovation, designing customized hulls for each Series with sector's most sophisticated methodology. In comparison with standard planing hulls optimized for POD propulsion, the hull of the Seadeck 7 is wider at the stern and more streamlined at the bow, allowing it to begin hydroplaning and therefore reducing drag at lower speeds. This advanced solution broadens the speed range at which the Seadeck 7 can navigate at peak efficiency.



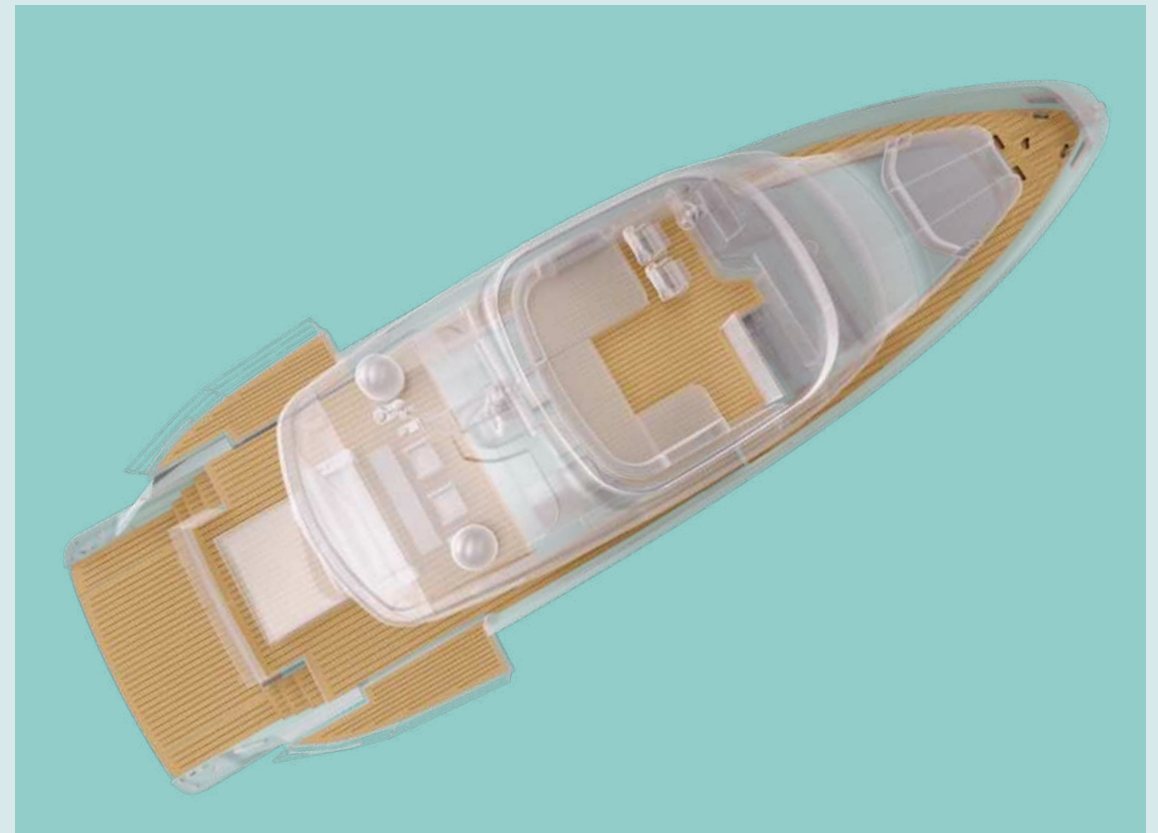
UNPRECEDENTED USE OF CARBON FIBER

Azimut's pioneering use of carbon fiber extends beyond pure performance. For the first time ever, up to 40% of the Seadeck 7's surface is laminated with carbon fiber, which lightens those parts by up to 30%, allowing for an unparalleled optimization of consumption and CO₂ emissions.



CORK DECKING

The Seadeck 7 features an innovative decking solution made entirely of cork, a sustainable material which, unlike traditional teak, can be harvested without damaging the tree and regrows over time. Cork's mechanical properties perfectly fit the Seadeck philosophy, with a combination of natural texture, heat and noise insulation, and light weight (40% less than teak).



ECO-CONSCIOUS BY NATURE

HONEY OAK



This essence is FSC certified. It is wood from responsibly managed forests and in accordance with rigorous environmental, social and economic standards.

ECO-LEATHER

The Eco-Leathers are made of recycled polyester.

PET AND ECONYL

The PET carpet is made of 100% recycled PET.

The Econyl carpet is obtained from regenerated nylon which gives the possibility of being recycled an indefinite number of times.

LAPITEC

The kitchen top is made of ecological Lapitec. It does not release any substance into the environment in which it is placed and the life cycle of the product is reversible: the material can be destroyed and pulverized – returning raw material – and reused to restart the production process.

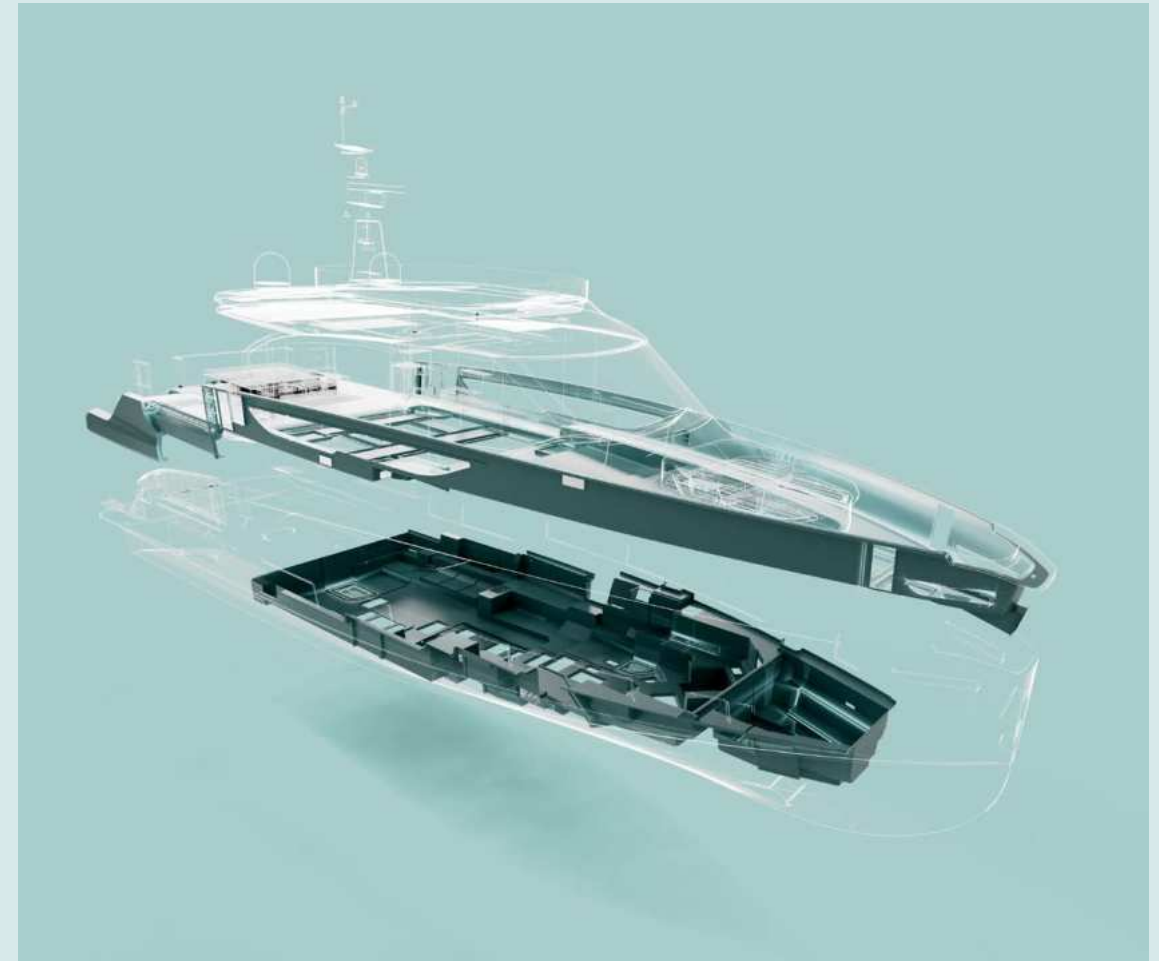
LIBECCIO

Outdoor cushions are made of recycled UV polyester.



RECYCLED PET

For the first time, Azimut has committed to using PET to replace PVC, reducing the amount of new plastic needed. PET, a recycled material that comes from plastic bottles, makes up 30% of the total structure of Seadeck yachts. It is infused into all the bulkheads, floors and 75% of the inner deck equivalent to 16,100 plastic bottles recycled for each boat produced.



RINA GREEN PLUS CERTIFICATION

Persistent investment in the research and implementation of advanced technologies and sustainable materials has allowed the Seadeck Series to be the shipyard's first to obtain the RINA GREEN PLUS PLATINUM class certification for its environmental performance, even in its standard configuration.





03

SEADECK 7 SPEC SHEET

GENERAL CHARACTERISTICS

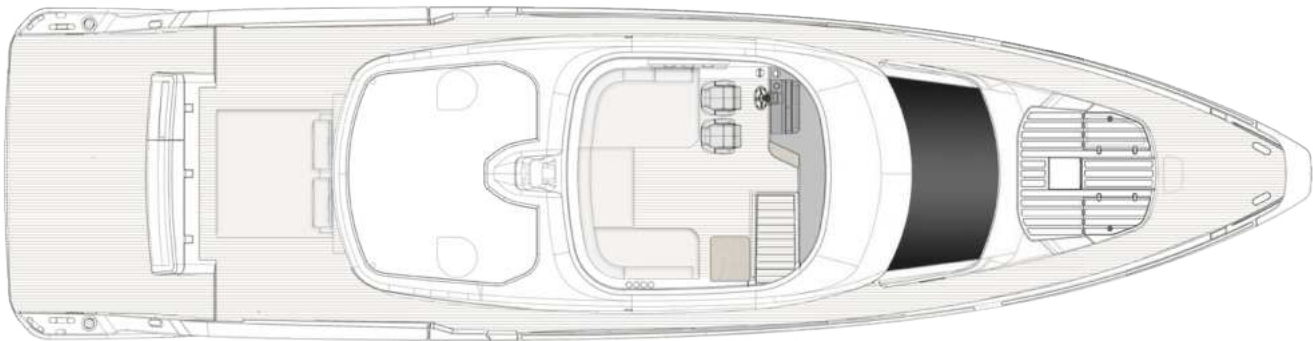
LENGTH OVERALL	21,70 m	71' 2"
BEAM MAX	5,48 m	17' 9"
DISPLACEMENT AT FULL LOAD	45,5 t	100310 lb
ENGINES	2 x Volvo Penta D13 IPS 30 1200 2 x Volvo Penta D13 IPS 30 1350	
MAXIMUM SPEED	up to 31 kn	
CRUISING SPEED	up to 23 kn	
FUEL CAPACITY	3700 l	978 US Gal
FRESH WATER CAPACITY	1000 l	264 US Gal
CABINS	4 + 1	
BERTHS	8 + 2	
HEAD COMPARTMENTS	3 + 1	
BUILDING MATERIAL	Carbon fibre + GRP	
INTERIOR STYLE & DECOR	Matteo Thun & Antonio Rodriguez	
EXTERIOR DESIGN & CONCEPT INTERIOR	Alberto Mancini	
HULL DESIGN	In collaboration with NAMES & Azimut R&D Dept.	
BUILDER	Azimut Yachts	

Last updated 01.2025
Please consult your dealer for the latest specifications.

UNI ISO 8666
The performance described applies to a vessel with standard configuration (standard equipment installed) and a clean hull, propellers, and rudder. It is also noted that the performance described was recorded under favourable sea and wind conditions (Beaufort scale index 1, Douglas scale index 1); different and worse sea conditions could significantly impact performance.

CE MARK
Given the continual evolution of technology, Azimut | Benetti S.p.A reserves the right to modify the technical specifications on its vessels at any time and without prior notice.

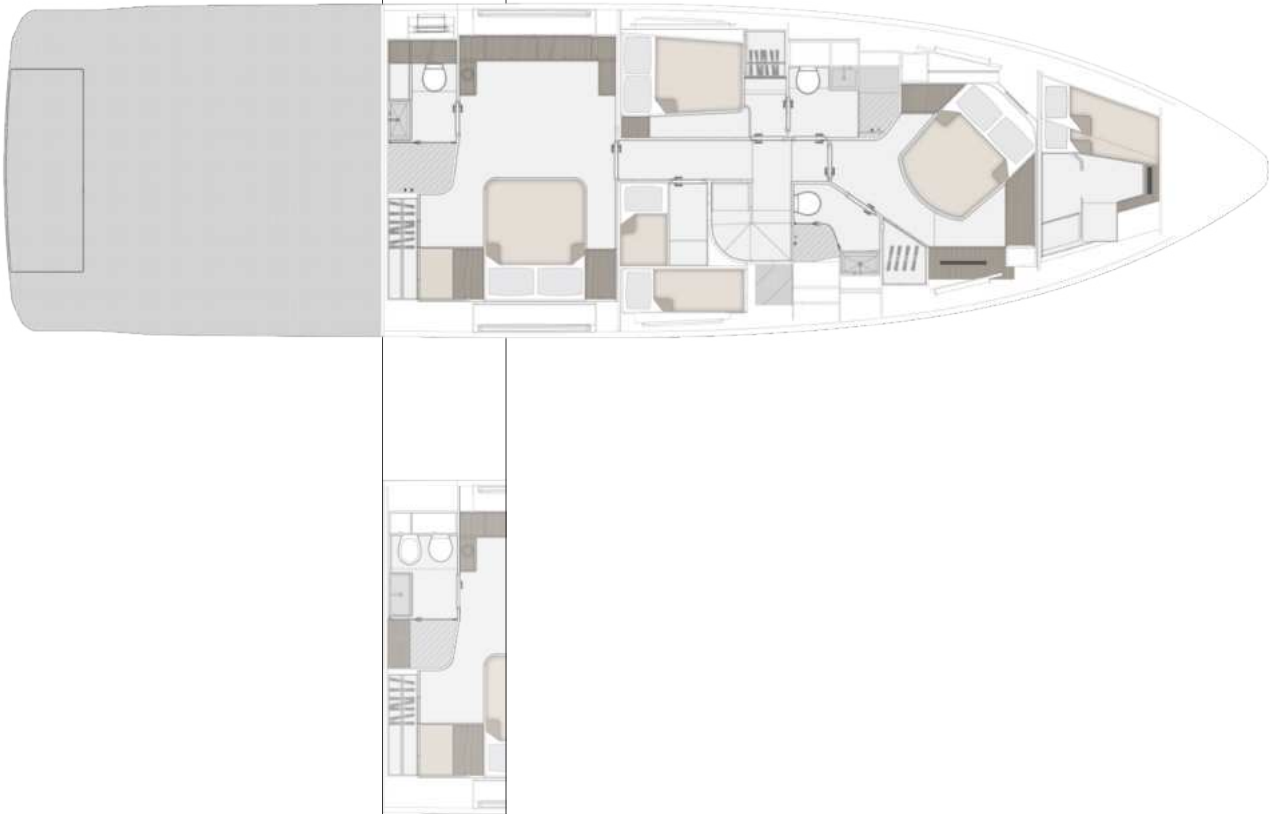
ABOVE VIEW



MAIN DECK



LOWER DECK





PRELIMINARY BROCHURE
SEADECK 7

RELEASE 02.25

This brochure in no way constitutes a contract of sale for the boatyard's vessels to any person or company. All information contained herein, including but not limited to technical and performance data, illustrations, and drawings, is non-binding and for purposes of illustration only. The information in this brochure refers to the boatyard's standard motoryacht models available as of the date of publication. Technical and descriptive information is valid only to the extent that it pertains to the specific vessel that is the subject of a purchase. Contract terms are valid only to the extent that they are contained in a contract of sale. This document is based on information available at the time of publication. Despite efforts to ensure the greatest possible accuracy, the information contained herein may fail to cover all details, omit technical or commercial changes that may have been made subsequent to publication, describe features that are not present, and fail to envisage all circumstances that might occur. Any illustrations, photographs, diagrams and examples shown in this brochure are included solely for the purposes of illustrating the text. Due to the different features of each vessel, the boatyard assumes no liability for actual use based on the illustrated applications.

AZIMUT

azimutyachts.com

