

30

AZIMUT

NM

MAGELLANO 30M



INDEX

01	THE DESIGN & LIFESTYLE ON BOARD	P04
02	HER MAIN TECHNICAL FEATURES	P36
03	MAGELLANO 30M SPEC SHEET	P41
04	THE MAGELLANO SERIES	P45
05	ABOUT AZIMUT	P47



A one-of-a-kind beauty, enrapturing,
that steals your breath away, leaving you
speechless. An extraordinary idea as the only
possible pathway, to get to where you want,
to explore, to go beyond.

The freedom of embracing the unknown,
that you know you'll love as a part of
your very own story. A thought that provokes
your mind and then inspires you to aim for the
impossible, making mistakes, yet being brave.
A magic je ne sais quoi that enchants and
intrigues you, moving you to feel more and
to sense uniqueness.

The choice to risk it all, the one that makes you
go for it, to impress yourself and all those who
are worth it.

AZIMUT.
DARE TO AMAZE.



01

THE DESIGN & LIFESTYLE ON BOARD

MAGELLANO 30M UNCONVENTIONAL PERFECTION

Exuding a sense of precious freedom, the Magellano 30M crossover emancipates a longing for authentic exploration. Constructed to excel in navigation to fascinating far-off destinations, she ignites the spark of curiosity and encourages spontaneous travel aspirations. The inspired interior ambience breathes elegance and abundance, with maximized spaces and luminosity further summoning the tantalizing feeling of onboard liberty.

Travel into freedom with the Magellano 30M.





Welcome aboard, ladies and gentlemen.

Let us begin the tour.



THE FIRST CROSSOVER- COUPE





The exteriors of the Magellano 30M bear the signature of Ken Freivokh. His design is guided by the desire for an object of timeless and fascinating beauty, far from fads and passing trends. Characteristic teak louvers bring personality to her profile, venturing further into the unmistakable style of the series. Designed for long voyages in total comfort, the Magellano 30M is outfitted with high bulwarks and large windows to safely immerse guests in the marine environment.

THE WONDER OF CRUISING

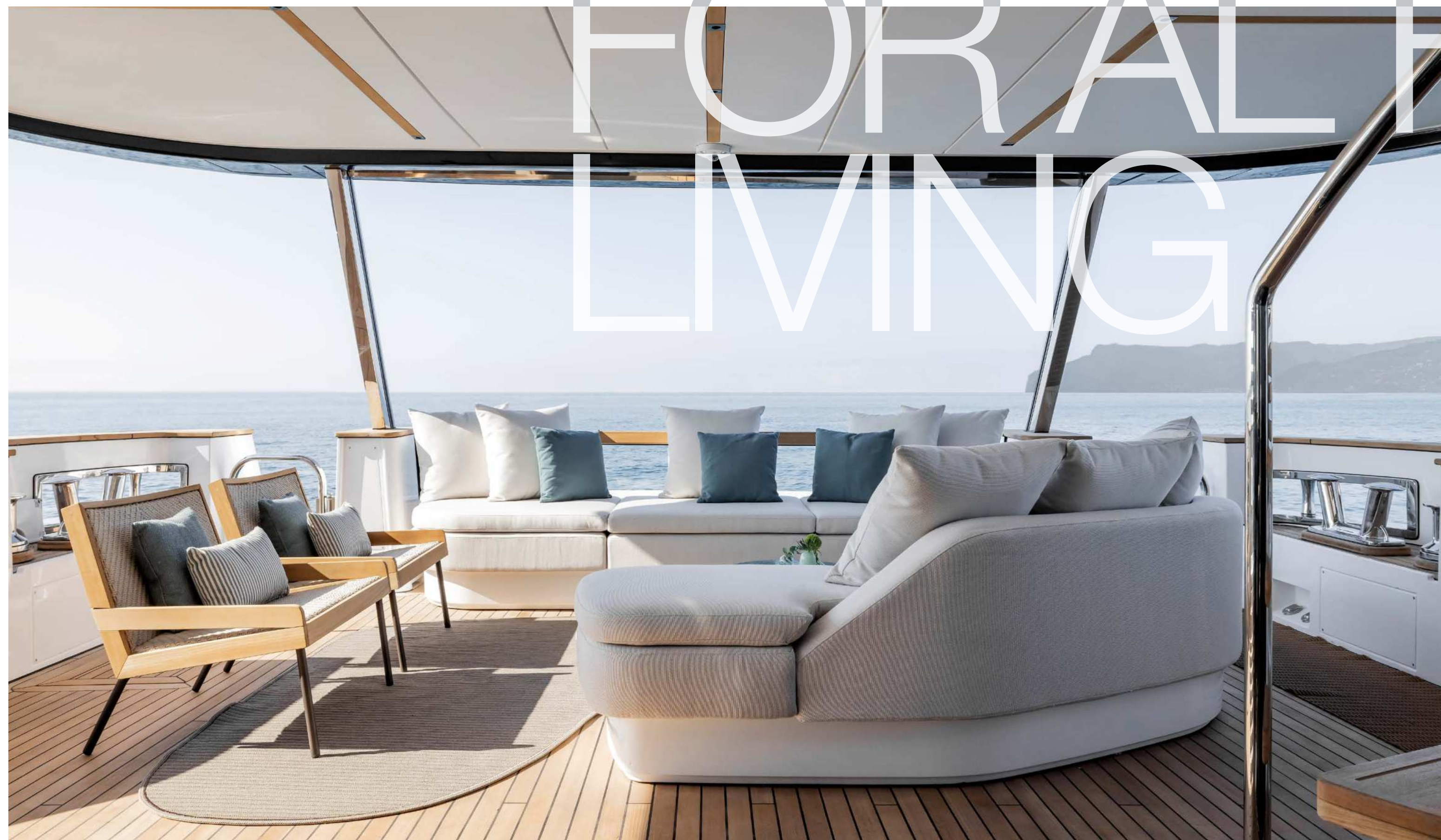


AT ONE WITH THE SEA

The transom hatch rotates down to create a pleasant platform on the sea, and may go even further to present a slide, easing the launch of the tender and jetski from the garage.



CONCEIVED FOR AL FRESCO LIVING

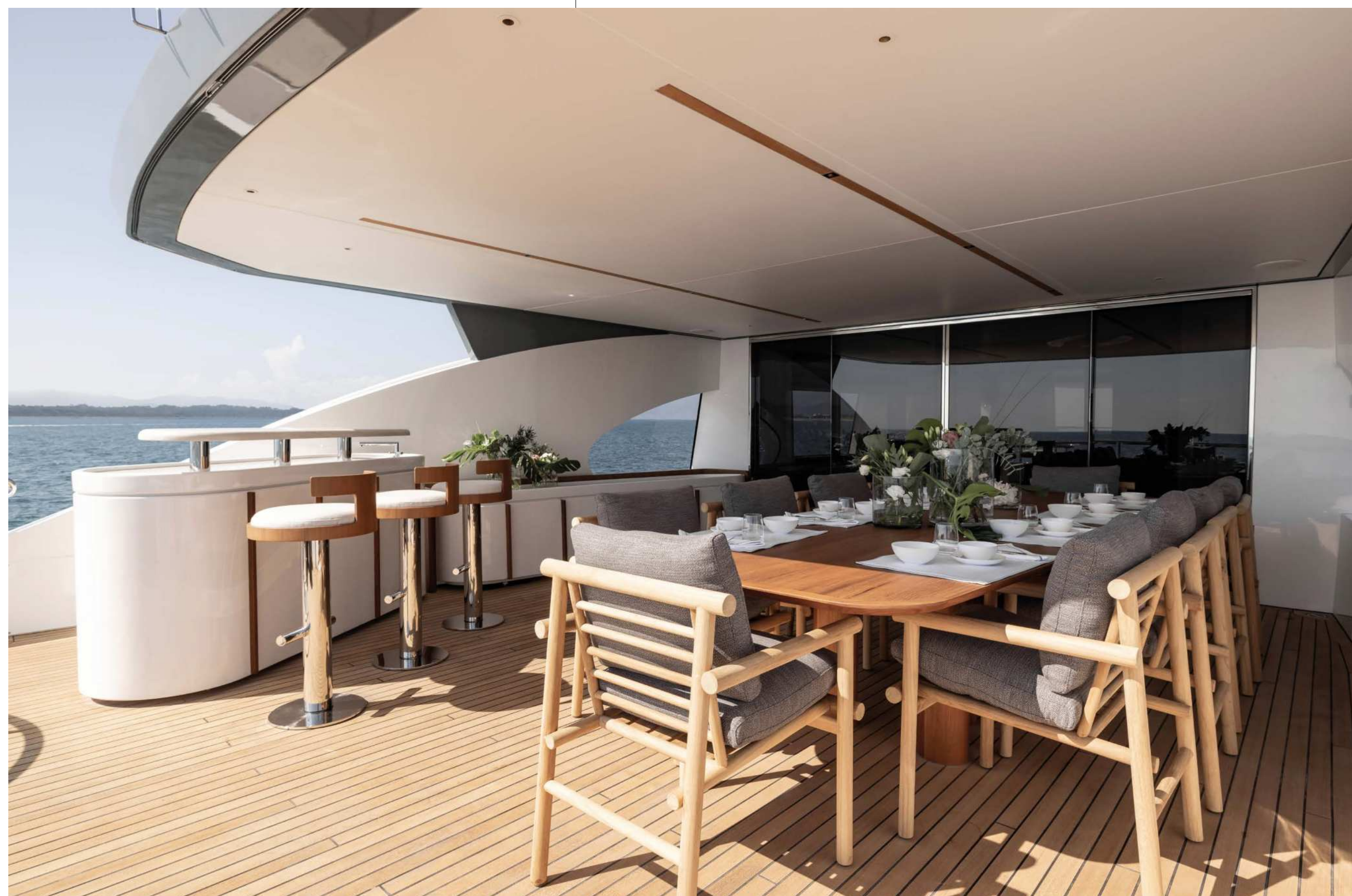




[The aft of the upper deck is a sprawling openair terrace, equipped with every essential for unforgettable days suspended between sky and sea. A refined and functional bar is oriented toward the view, ahead of the recessed dining area, deeper under the shelter of the hard top.]



[Flourishing under the hard top's protection, the dining arrangement is ample and comfortable, served by a fully equipped Botticino marble bar, plus two sunbeds to guarantee maximum comfort.]



THE UNIQUE NATURE OF THE VOYAGE



A refined aesthetic that enhances the yacht's timeless appeal. The design approach on board the Magellano 30M harmonizes with the yacht's exterior, bringing the elegance of the late 19th-century colonial style into the modern era without resorting to clichéd classical references. Specifically, the lateral louvers that sign the flanks of the exterior are reinterpreted as Venetian blinds for the interiors.





BREATHTAKING OPEN-AIR BEAUTY

Characterized by unexpected geometries, the bow hosts a large lounging area, laid out as an archipelago of islands at various heights. The variety of thickness in the upholstery defines each furnishing's function as seat or sunbed. The forelounge can also be equipped with a jacuzzi.





[The cockpit offers a versatile conversation area that can transform into a bar with a refrigerator and countertop set before the Infinity Terrace, which features a transparent parapet to protect the area while extending the panoramic views down the waves.]



MAGELLANO 30M



AZIMUT YACHTS





FLOODED BY LIGHT AND SOAKING IN CHARM



The Main Deck's layout emphasizes openness and unobstructed views. Low-profile furnishings and a lack of visual barriers allow guests to fully appreciate the panoramic sea views. The saloon features plush, movable sofas that facilitate conversation and interaction, creating a warm and inviting atmosphere.





MAGELLANO 30M



AZIMUT YACHTS

A DESIGN TALE FOR MODERN EXPLORATION

A central dining area is framed by a ceramic panel that blend glossy and matte finishes, adding a sophisticated touch reminiscent of 1930s design. The use of wood flooring and integrated lighting enhances the sense of space and continuity from the cockpit through to the bow.



Now, let us discover the guest accommodations.

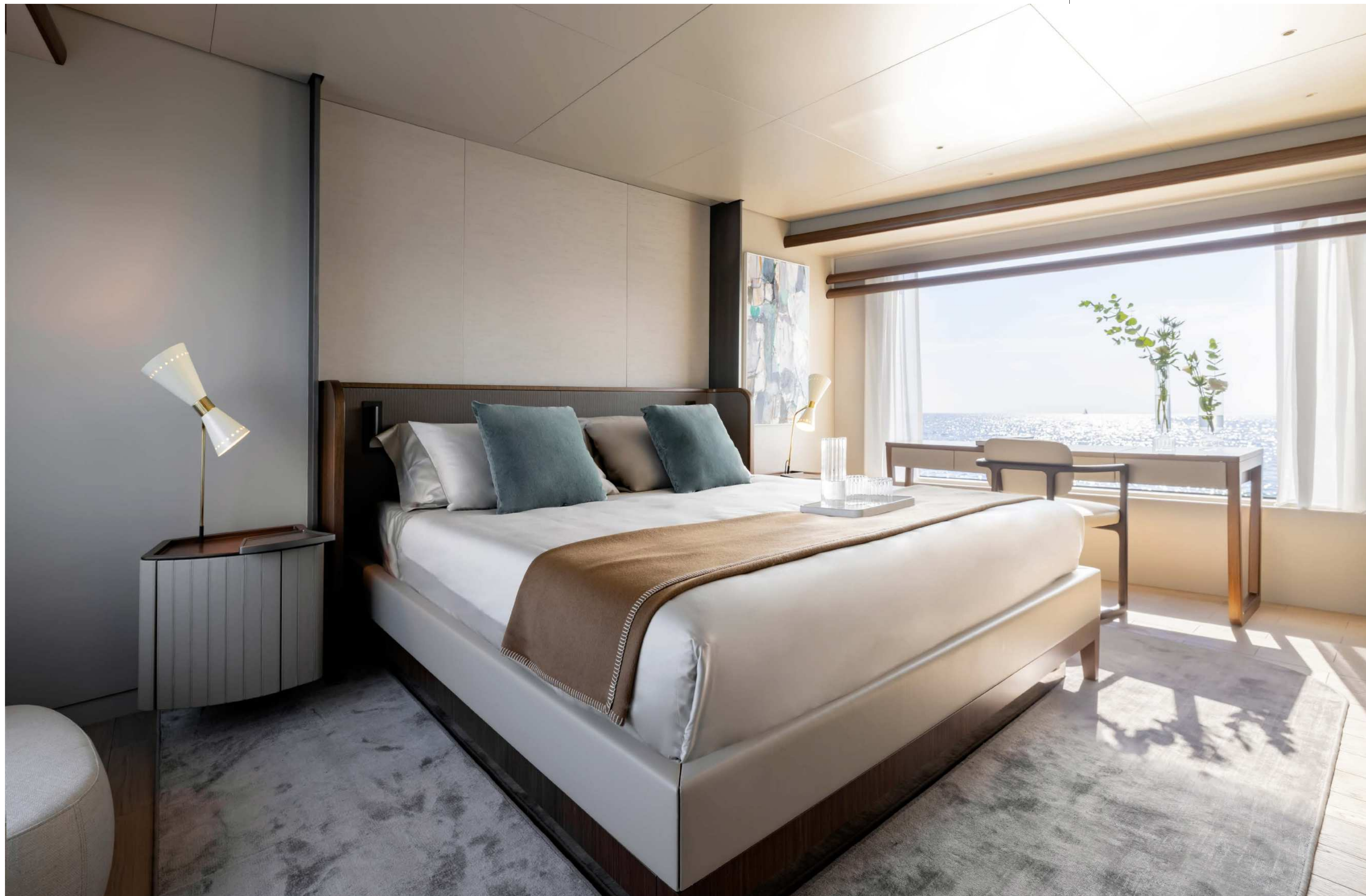
Shall we?



BRIGHT, FLUID AND SURPRISING

The full-beam owner's suite on the Main Deck offers a luxurious retreat with floor-to-ceiling windows providing uninterrupted sea views. The interior features a blend of warm materials and soft, flowing lines.





The use of Fior di Pesco marble, the teak and bronze accents and the custom-designed headboard lend the room an extreme elegance. The en suite bathroom is equally opulent, with brushed bronze fittings and a teak-lined shower.





FLUID AMBIENCES







On the Lower Deck, guests are accommodated across two VIP cabins and two guest cabins, each designed with the same attention to detail. The cabins feature travertine stone finishes, integrated lighting, and thoughtful storage solutions. The VIP cabins include vanity areas and en suite bathrooms with silver-brown travertine finishes and brushed bronze fixtures.





The galley is directly connected to the separate crew area in the forward area, which consists of three cabins, three heads and a large crew mess ready to accommodate up to five crew members.

02

HER MAIN TECHNICAL FEATURES

The beauty of the Magellano 30M is not solely a matter of exterior and interior design elements that combine to perfectly play out Azimut's essence. Her beauty lies also in discovering the technological advancements and special components that contribute to making her truly unique and highly innovative.

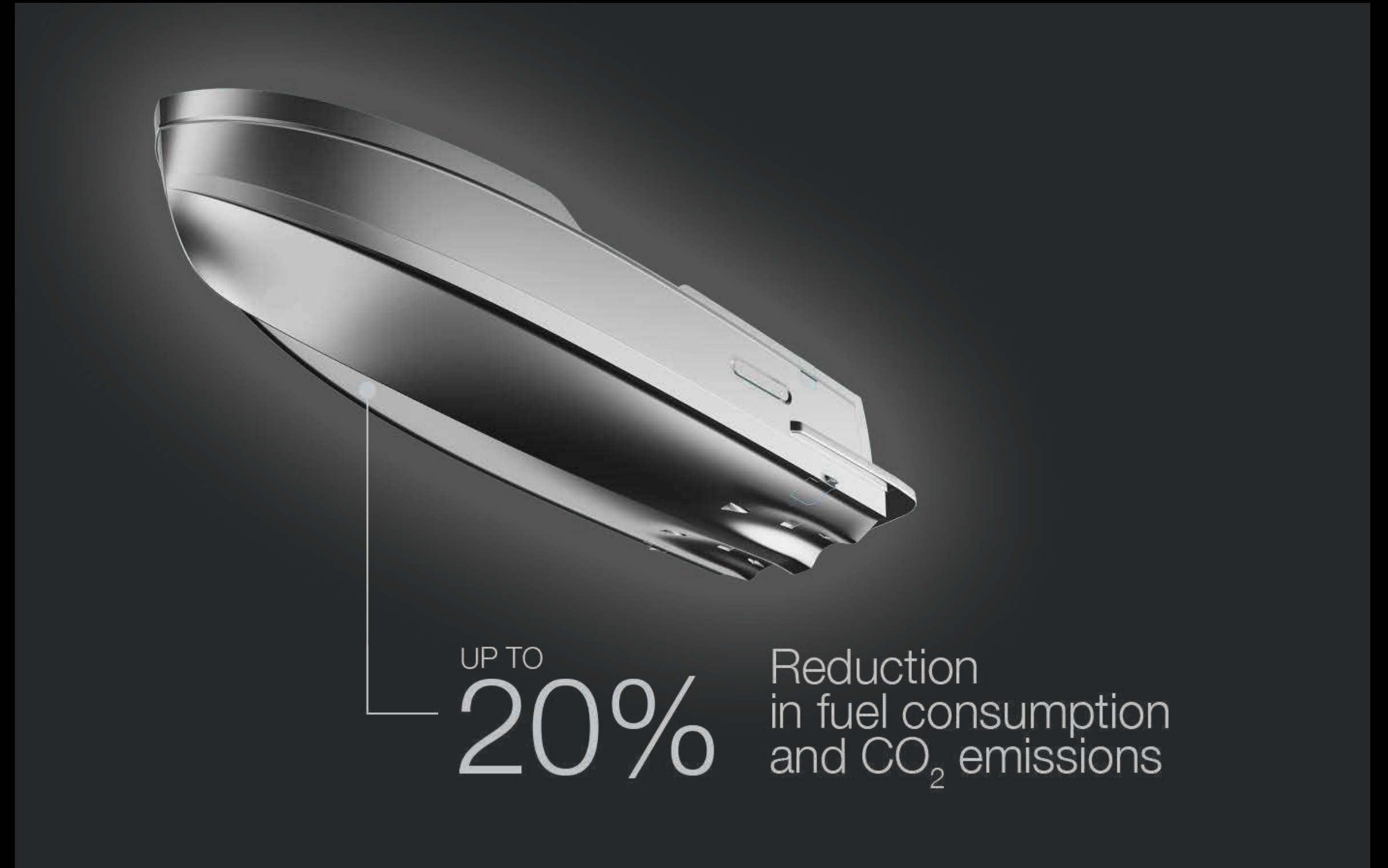
LOW EMISSION YACHT



DUAL MODE HULL

The Dual Mode hull is a highly efficient semi-planing hull designed to reduce fuel consumption and CO₂ emissions by up to 20 at medium speeds*, guaranteeing superior navigation comfort in a wider range of sea conditions. The double-chine hull, combined with the vertical bow, minimizes the impact of waves and thus offers greater freedom of navigation, cruising comfortably at low speeds for extended durations as well as at higher speeds.

*compared to vessels of the same weight and size with a traditional hard-chine hull



ZERO EMISSIONS HOTEL MODE

A 130kW/h lithium-ion battery pack can support the yacht's hotel load for up to 4 hours during the day and up to 8 hours at night. Now, it's possible to enjoy the full superyacht experience without the noise, vibration and emissions of the generators, making daytime activities more pleasant and nighttime relaxation more peaceful.



EFFICIENT AIR TREATMENT

Aircare Energy Saving completely refreshes the onboard atmosphere every two hours with filtered outside air, especially appreciated below deck. The decentralized system uses a dual-flow heat exchanger, so it can optimize both the temperature and the humidity of the incoming fresh air in each zone without increasing the parallel HVAC's energy consumption. Meanwhile, the triple multilayered filter eliminates 98% of fine particles that pollute the air, such as pollen, dust mites, spores and even some bacteria.



03

MAGELLANO 30M SPEC SHEET

GENERAL CHARACTERISTICS

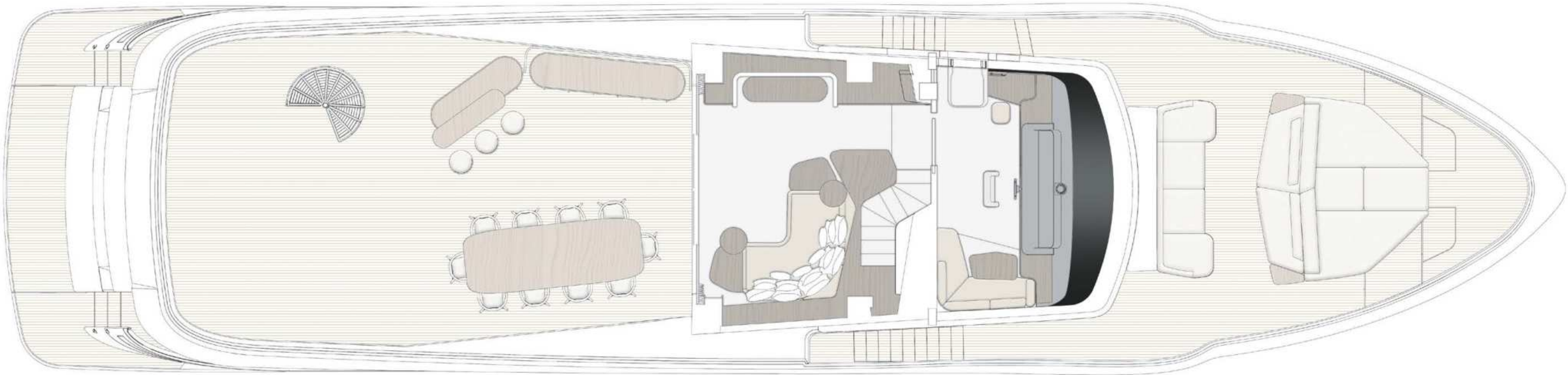
LENGTH OVERALL	29,63 m	97’ 5”
BEAM MAX	7,06 m	23’ 2”
DRAFT	2,05 m	6’ 9”
DISPLACEMENT	136 t	299826 lb
ENGINES	2 x MAN V12 1550 hp	2 x MAN V12 1900 hp
MAXIMUM SPEED	20/24 kn	
CRUISING SPEED	16/18 kn	
KEEL	Semidisplacement Dual Mode	
FUEL CAPACITY	14500 l	3831 US Gal
WATER CAPACITY	2130 l	563 US Gal
CABINS	5 + 3 crew	
BERTHS	10 + 5 crew	
HEAD COMPARTMENTS	6 + 3 crew	
BUILDING MATERIAL	GRP	
EXTERIOR DESIGNER	Ken Freivokh	
INTERIOR DESIGNER	Yachtique	
HULL DESIGNER	P.L. AUSONIO Naval Architecture & Azimut R&D Dept.	
BUILDER	Azimut Yachts	
CERTIFICAZIONI /CERTIFICATIONS	Structural project compliant with Rina Class Pleasure Certificate (certificate upon request as optional)	

Last updated 12.2024
Please consult your dealer for the latest specifications.

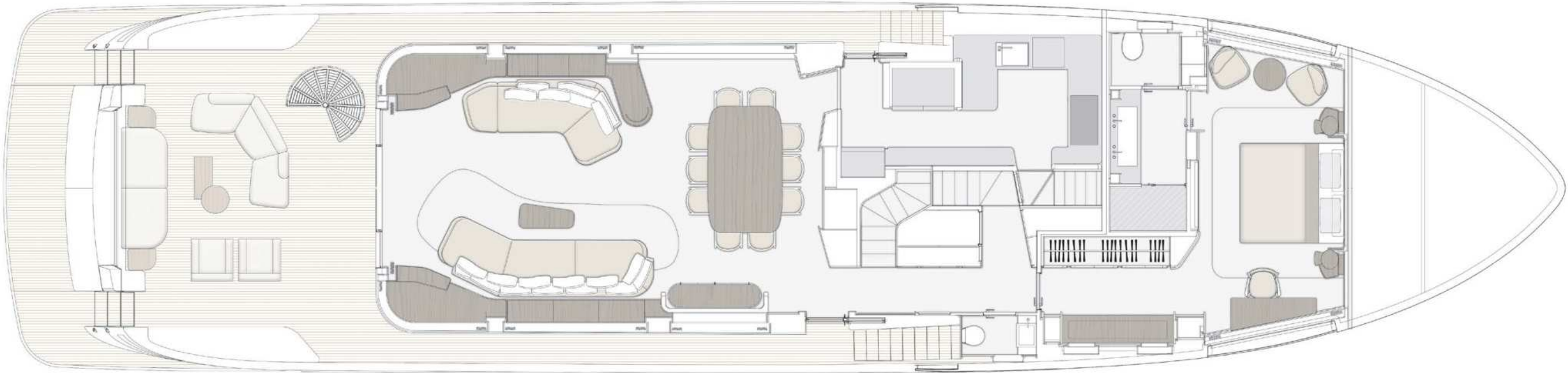
UNI ISO 8666
The performance described applies to a vessel with standard configuration (standard equipment installed) and a clean hull, propellers, and rudder. It is also noted that the performance described was recorded under favourable sea and wind conditions (Beaufort scale index 1, Douglas scale index 1); different and worse sea conditions could significantly impact performance.

CE MARK
Given the continual evolution of technology, Azimut | Benetti S.p.A reserves the right to modify the technical specifications on its vessels at any time and without prior notice.

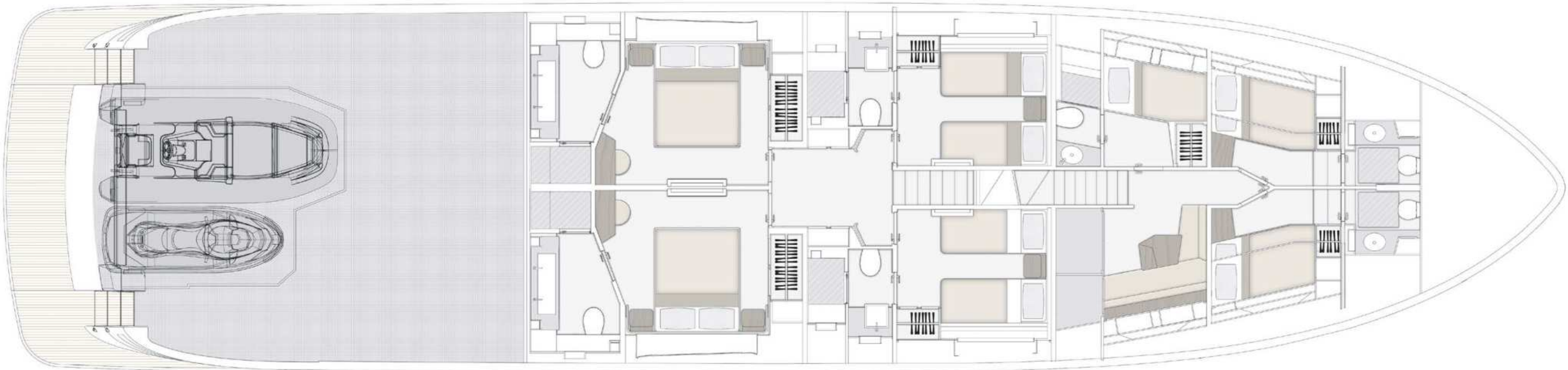
UPPER DECK



MAIN DECK



LOWER DECK



04

THE MAGELLANO SERIES

THE TIMELESS YET CONTEMPORARY CROSSOVER

Epitomizing the spirit of adventure and discovery, the Azimut Magellano Series represents a timeless yet modern-day milestone of innovation. As the first nautical crossover ever designed, its concept aims to evoke the profound relationship of sea connoisseurs with the marine habitat, accomplishing construction savoir-faire to offer tranquil, long-range journeys in all weather conditions and classically sophisticated interiors with thoughtful storage space.

Prepare to savor your time at sea, navigating the world at your own personal pace.

60
66
25M
30M



05

ABOUT AZIMUT



A FAMILY-MADE COMPANY CULTURE

An immense and personal passion for the sea. A clear and forward-facing attitude. A strong and relentless work ethic. Since 1969, Paolo Vitelli, the creative visionary founder and businessman behind Azimut, has been set on challenging the industry's status quo with a daring desire: bring to life an unexpected nautical experience, through yachts built to combine alluring aesthetics with construction expertise and impeccable technology.

An audacious mindset that has, over time, surprised and captivated the yachting sector, transforming Azimut into a bold and recognizable benchmark, and laying the foundation for the birth of the largest megayacht builder in the world, the Azimut | Benetti Group.

The international and management-based standing of the company today, is deeply nourished by the solid and memorable family heritage that has distinguished it from the beginning. A historically pioneering vision that enables it to continue thriving day after day, through ingenious inventions and long-term goals that look to the future with Paolo's daughter, Giovanna Vitelli.

A SUSTAINABLE VISION TODAY, FOR TOMORROW

An avant-garde vision and a strong emotional appeal have shaped the history of Azimut as a leader in the field of nautical innovation as well as its commitment to the creation of a sustainable-oriented and attentive company culture today.

An ambitious and personal touch that has allowed Azimut to grow and evolve on both levels, embracing the challenge of a future nurtured by an eco-conscious approach to boat construction and by an authentic focus and responsibility on human well-being.





OUR ECO-YACHTING PHILOSOPHY

The Azimut I Benetti Group has made tangible investments to guide the Technical as well as the R&D departments toward the construction of yachts with a diminished environmental impact. Its main areas of intervention have focused on significantly lowering fuel consumption and CO2 emissions through the development of highly efficient hull designs, innovative propulsion systems and an extensive use of carbon fiber to decrease yacht weight.



A SAFE AND HEALTHY WORK ENVIRONMENT

The forerunning shipyard of Avigliana was the first of the company's Italian shipyards to obtain the ISO 45001 certification in 2011, attesting its rigorous abidance to all occupational health and safety requirements. Recognized as the most technologically-advanced shipyard in Europe, it has also led the nautical sector revolution in terms of being among the earliest adopters of the vacuum infusion process to drive resin into a laminate, avoiding styrene emissions and therefore guaranteeing its precious workers a healthier setting.

As of 2013, all the other Italian production sites have adapted to meet the necessary requirements to obtain the ISO 45001 certification.



MAGELLANO 30M



AZIMUT YACHTS

A GLOBALLY-CONNECTED DEALER AND SERVICE NETWORK

5 SHIPYARDS

6 DIRECT OFFICES

138 OFFICIAL DEALERS

80 COUNTRIES

The highly widespread commercial network put in place by Azimut Yachts, allows the company to offer a continuous presence to its ship owners, concretely curating their demands by meeting their most specific needs.

Find your Dealer →



THE LARGEST PRIVATE GROUP IN THE YACHTING WORLD

Azimut is part of the Azimut | Benetti Group, the biggest private player and shipbuilder in the nautical sector today. The Vitelli family, the founder and majority shareholder of the company, has been leading the way for over fifty years now, continuing to innovate through the Group's main yacht brands, Azimut and Benetti, while developing a variety of service brands to cater to the different demands of ship owners worldwide.



OUR SHIPYARDS MAKE US PROUD

Avigliana — Italy

HQ / SHIPYARD

Savona — Italy

DELIVERY CENTRE

Viareggio — Italy

SHIPYARD / STYLING LOUNGE

Fano — Italy

SHIPYARD

Itajaí — Brazil

SHIPYARD



CONCEPT & DESIGN: APART
PHOTOS: ALESSANDRO GUERRIERI

AZIMUT YACHTS THANKS: RUBELLI, PAOLA LENTI, LORO PIANA,
KOONES, OLIVERI, SALVATORI, CC TAPIS

OFFICIAL PARTNERS



GARMIN

NAVICO
GROUP

Raymarine

SEAKEEPER

VOLVO
PENTA

AZIMUT | BENETTI SPA
VIA MARTIN LUTHER KING, 9
10051 AVIGLIANA, TORINO
ITALY

RELEASE 12.24

This brochure in no way constitutes a contract of sale for the boatyard’s vessels to any person or company. All information contained herein, including but not limited to technical and performance data, illustrations, and drawings, is non-binding and for purposes of illustration only. The information in this brochure refers to the boatyard’s standard motoryacht models available as of the date of publication. Technical and descriptive information is valid only to the extent that it pertains to the specific vessel that is the subject of a purchase. Contract terms are valid only to the extent that they are contained in a contract of sale. This document is based on information available at the time of publication. Despite efforts to ensure the greatest possible accuracy, the information contained herein may fail to cover all details, omit technical or commercial changes that may have been made subsequent to publication, describe features that are not present, and fail to envisage all circumstances that might occur. Any illustrations, photographs, diagrams and examples shown in this brochure are included solely for the purposes of illustrating the text. Due to the different features of each vessel, the boatyard assumes no liability for actual use based on the illustrated applications.

^ZIMUT

azimutyachts.com

