

2

AZIMUT

5

NM

MAGELLANO 25M



# INDEX

01	THE DESIGN & LIFESTYLE ON BOARD	P04
02	HER MAIN TECHNICAL FEATURES	P30
03	MAGELLANO 25M SPEC SHEET	P38
04	THE MAGELLANO SERIES	P43
05	ABOUT AZIMUT	P45



A one-of-a-kind beauty, enrapturing,  
that steals your breath away, leaving you  
speechless. An extraordinary idea as the only  
possible pathway, to get to where you want,  
to explore, to go beyond.

The freedom of embracing the unknown,  
that you know you'll love as a part of  
your very own story. A thought that provokes  
your mind and then inspires you to aim for the  
impossible, making mistakes, yet being brave.  
A magic je ne sais quoi that enchants and  
intrigues you, moving you to feel more and  
to sense uniqueness.

The choice to risk it all, the one that makes you  
go for it, to impress yourself and all those who  
are worth it.

AZIMUT.  
DARE TO AMAZE.



01

# THE DESIGN & LIFESTYLE ON BOARD



# MAGELLANO 25M ENCHANTMENT SUSPENDED IN TIME

Designed for endless voyages suspended between the sky and the sea, the Magellano 25M was born to reclaim the element of time.

A work of art of surprising fascination, her exterior lines transcend the trends with their enduring and powerful presence. Inspiring interiors, illuminated by natural light that openly flows through, embody the marine allure in attractive nuances and softened geometries, permeating the vessel with enchantingness from stern to bow.

Dance with the sea aboard the Magellano 25M.









Welcome aboard, ladies and gentlemen.

Let us begin the tour.







# THE AZIMUT CROSSOVER





The exteriors of the Magellano 25M have been designed by Ken Freivokh. The vision that guided his design of the lines of the boat was wonderfully simple: to create an object of timeless, exquisite beauty, immune to passing fads and trends.

A superstructure entirely in glass, conceived to recreate the idea of a penthouse overlooking the sea, is the central element around which the entire design revolves.

Customised teak louvres on either side of the aft area of the deckhouse add an indefinable personality to the boat's silhouette. An elegant spiral staircase leads to the flybridge, where the hard top is supported by a minimal central mast, while the near-vertical prow reminds us of the Magellano's outstanding credentials when it comes to seaworthiness.









The versatile bow area can be enjoyed whilst stretched out on sunbeds or as a lounge zone, depending on the time of day.



# A VISUALLY IMMERSIVE EXPERIENCE

The innovative cockpit design features a retractable panel that can be lowered to leave a transparent parapet, transforming the space into a glorious terrace with unimpeded views onto the sea. The same panel, which also serves as the garage hatch, then unfolds to create a spacious bathing platform by the water's edge.





# A TIMELESS TOUCH



An elegant spiral staircase leads up to the fly deck, where the hard top is supported by a minimalist central mast.





[ The position of table and sofa, together with the retractable panel that can be lowered to leave a transparent parapet, transform the cockpit into a glorious terrace. ]







# A TIMELESS BEAUTY

Timelessness is in the very DNA of the Magellano collection and in the Magellano 25M it is achieved through the harmonious fusion of perfect proportions and the classic elegance of the external styling, together creating a flawless continuity of line and integration of space.









The interiors are designed for long stays on board in superb comfort, with generous spaces and abundant storage.





# A COZY SOPHISTICATION



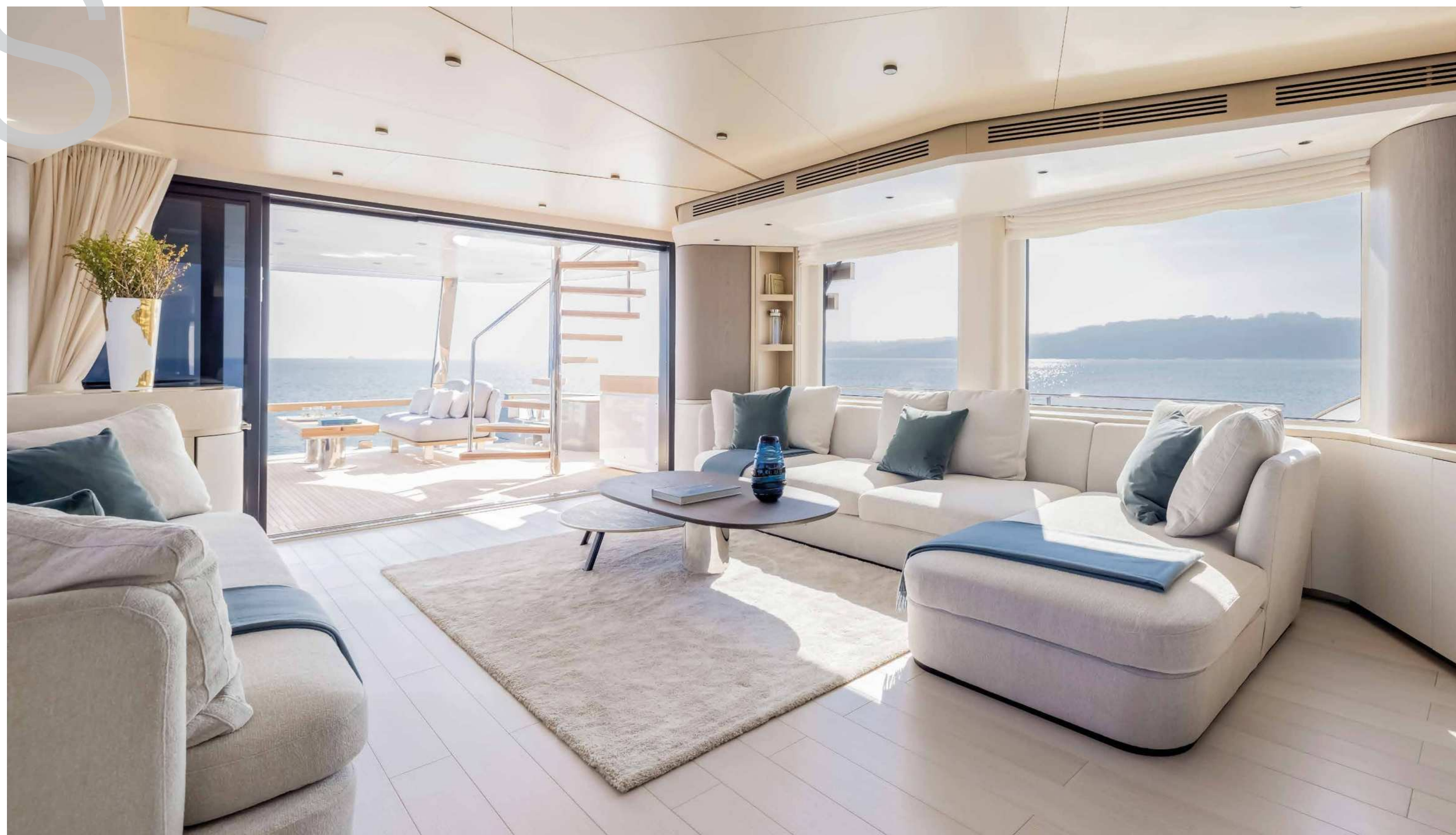
MAGELLANO 25M



AZIMUT YACHTS



# LIFE-STYLISH SPACES







Now, let us discover the guest accommodations.

Shall we?









The interiors are designed for long stays on board in superb comfort, with generous spaces and abundant storage. Enclosing ample and welcoming environments, common as well as personal, the Magellano 25M offers a full-beam owner's suite amidships with an expansive washroom, two VIP suites, both with queen-sized beds, and a fourth guest cabin with twin beds.



[ The tapered walkin wardrobe creates a greater sense of spaciousness. ]

# DESIGNED TO WELCOME





MAGELLANO 25M



AZIMUT YACHTS









MAGELLANO 25M



AZIMUT YACHTS



[ The layout thoughtfully places the Raised Pilot House and a completely closed galley at the bow with direct access to the crew quarters, allowing the crew to work uninterrupted using separate flows between the directly connected internal and external helm stations as well as the side door out of the galley. ]



MAGELLANO 25M



AZIMUT YACHTS



# A PERFECT PRIVACY



The crew quarters are accessed directly from the galley, ensuring an exceptional level of privacy for the owner and guests.





02

# HER MAIN TECHNICAL FEATURES



The beauty of the Magellano 25M is not solely a matter of exterior and interior design elements that combine to perfectly play out Azimut's essence. Her beauty lies also in discovering the technological advancements and special components that contribute to making her truly unique and highly innovative.





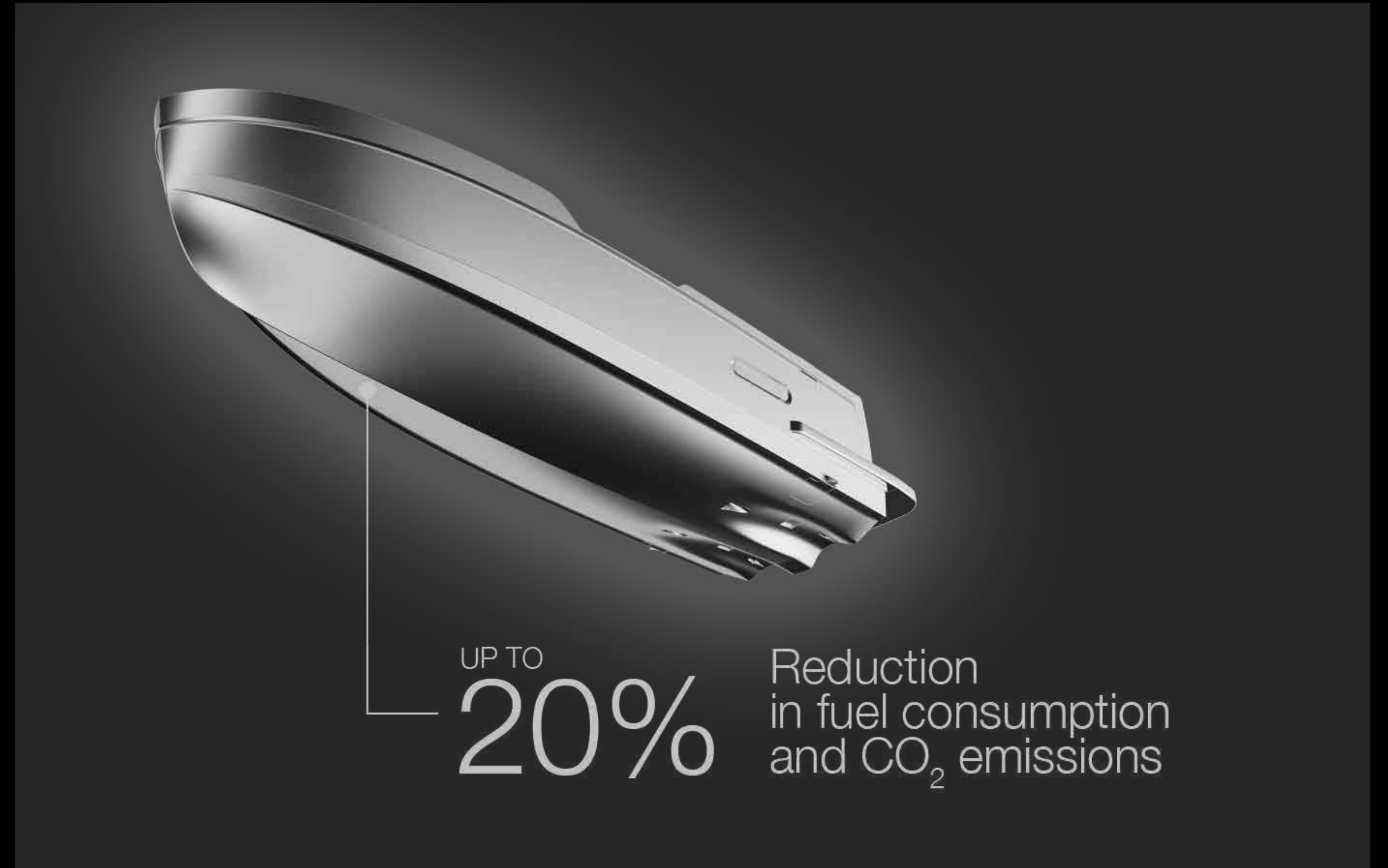
# LOW EMISSION YACHT



## DUAL MODE HULL

The Dual Mode hull is a highly efficient semi-planing hull designed to reduce fuel consumption and CO<sub>2</sub> emissions by up to 20 at medium speeds\*, guaranteeing superior navigation comfort in a wider range of sea conditions. The double-chine hull, combined with the vertical bow, minimizes the impact of waves and thus offers greater freedom of navigation, cruising comfortably at low speeds for extended durations as well as at higher speeds.

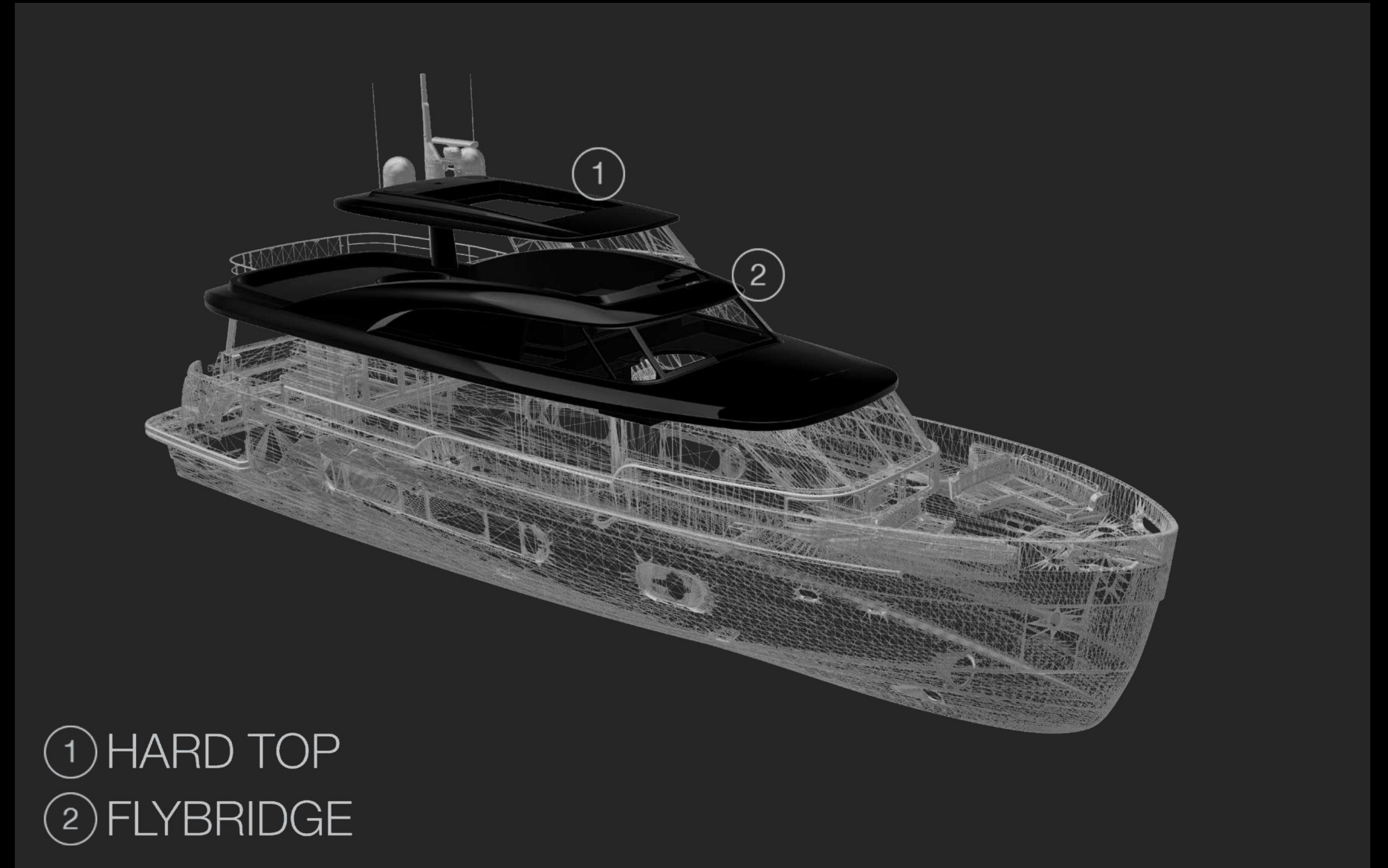
\*compared to vessels of the same weight and size with a traditional hard-chine hull





# CARBON-TECH GENERATION

Azimut's pioneering use of carbon fiber lamination goes beyond pure performance. The Carbon Tech Generation offers expanded volumes on board, while maintaining excellent dynamic stability and perfect handling. Preserving the yacht's low center of gravity, the carbon fiber was focused on the upper parts of the yacht, lightening the laminated components by up to 30% and reducing the natural roll momentum up to 15%.





# ZERO EMISSION HOTEL MODE

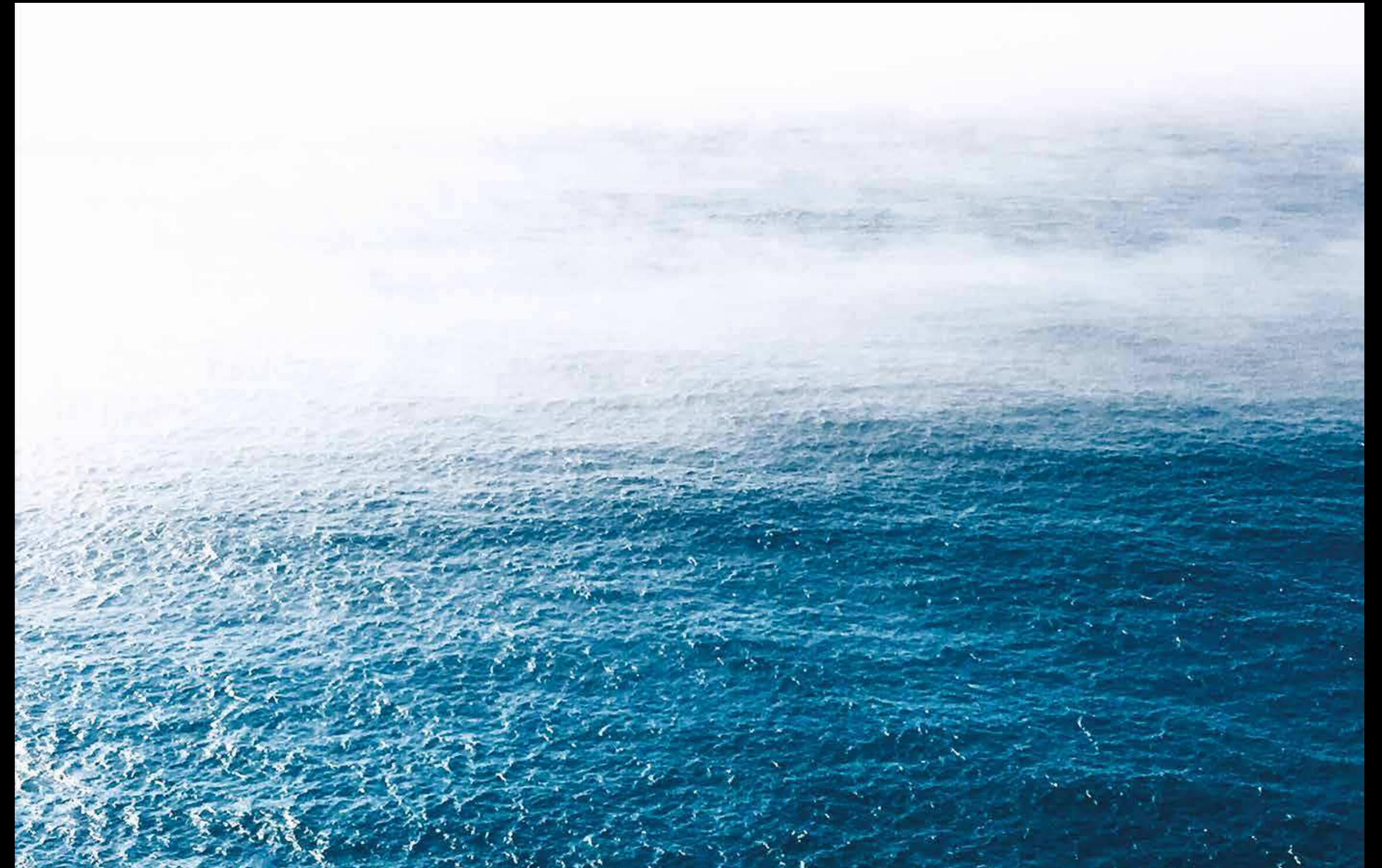
A 75kW/h lithium-ion battery pack can support the yacht's hotel load for up to 4 hours during the day and up to 8 hours at night. Now, it's possible to enjoy the full superyacht experience without the noise, vibration and emissions of the generators, making daytime activities more pleasant and nighttime relaxation more peaceful.





# SPACE-AGE AIR TREATMENT

The BCOOL system completely refreshes the onboard atmosphere every hour with filtered seabreeze, especially appreciated below deck. The decentralized system uses a dual-flow heat exchanger, so it can optimize both the temperature and the humidity of the incoming fresh air in each zone without increasing the parallel HVAC's energy consumption. The NASA-patented sanitization process reproduces the purifying power of the sun, using UV rays to turn airborne moisture into hydrogen peroxide, which destroys the majority of pollutants, including bacteria, viruses, mould, allergens and odors.





# SUPERYACHT- LEVEL SILENCE

Aspiring to maximize comfort, the yacht is built to the elevated technical standards of a larger vessel. From flexible couplings connecting the engines and inverters to acoustic floating solutions for the floor, walls and ceiling of the owner's suite, the emphasis is on reducing noise and vibrations to an absolute minimum.





# HTS HIGH TECHNICAL STANDARD DECLARATION

This yacht’s design and engineering meet the highest standards for production recreational vessels. Azimut Yachts issues a declaration of the premium materials, advanced technology and rigorous testing procedures.





03

# MAGELLANO 25M

## SPEC SHEET



# GENERAL CHARACTERISTICS

LENGTH OVERALL	25,22 m	82’ 9”
BEAM MAX	6,30 m	20’ 8”
DRAFT	1,90 m	6’ 3”
DISPLACEMENT	87,50 t	86118 lb
ENGINES	2 X MAN V12 1400 hp	2 X MAN V12 1550 hp
MAXIMUM SPEED	up to 24/25 kn	
CRUISING SPEED	up to 18/19 kn	
KEEL	1,50 m	4’ 11”
FUEL CAPACITY	8100 l	2139 US Gal
WATER CAPACITY	1500 l	396 US Gal
CABINS	4 + 2 crew	
BERTHS	8 + 3 crew	
HEAD COMPARTMENTS	5 + 1 crew	
BUILDING MATERIAL	Carbon fibre + GRP	
EXTERIOR DESIGNER	Ken Freivokh	
INTERIOR DESIGN CONCEPT	De Cotiis Architects	
INTERIOR DESIGN AND DECORATION	Azimut Yachts	
HULL DESIGNER	P.L. AUSONIO Naval Architecture & Azimut R&D Dept.	
BUILDER	Azimut Yachts	

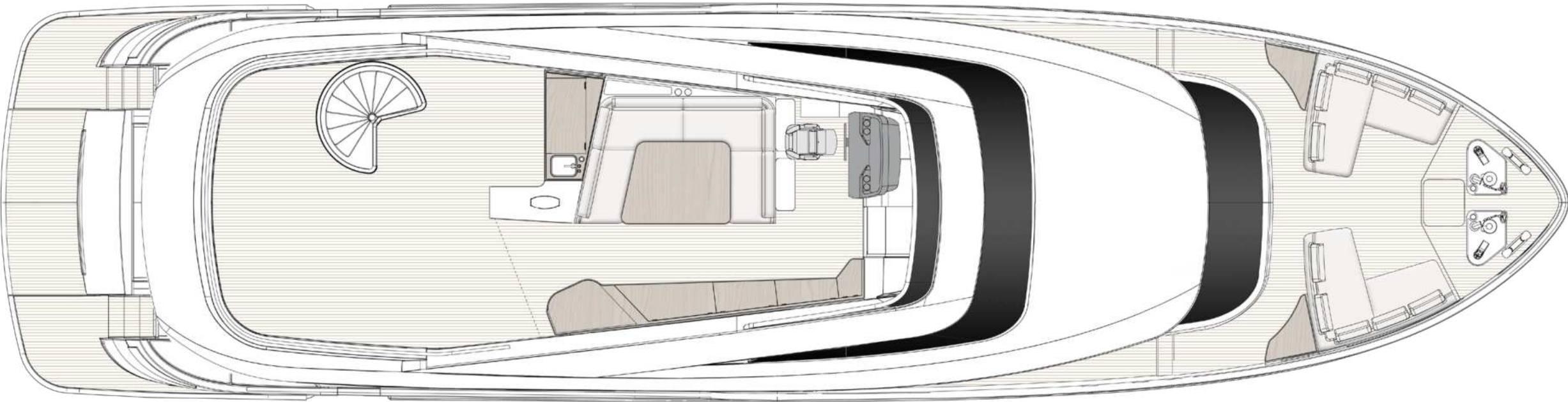
Last updated 01.2023  
Please consult your dealer for the latest specifications.

UNI ISO 8666  
The performance described applies to a vessel with standard configuration (standard equipment installed) and a clean hull, propellers, and rudder. It is also noted that the performance described was recorded under favourable sea and wind conditions (Beaufort scale index 1, Douglas scale index 1); different and worse sea conditions could significantly impact performance.

CE MARK  
Given the continual evolution of technology, Azimut | Benetti S.p.A reserves the right to modify the technical specifications on its vessels at any time and without prior notice.

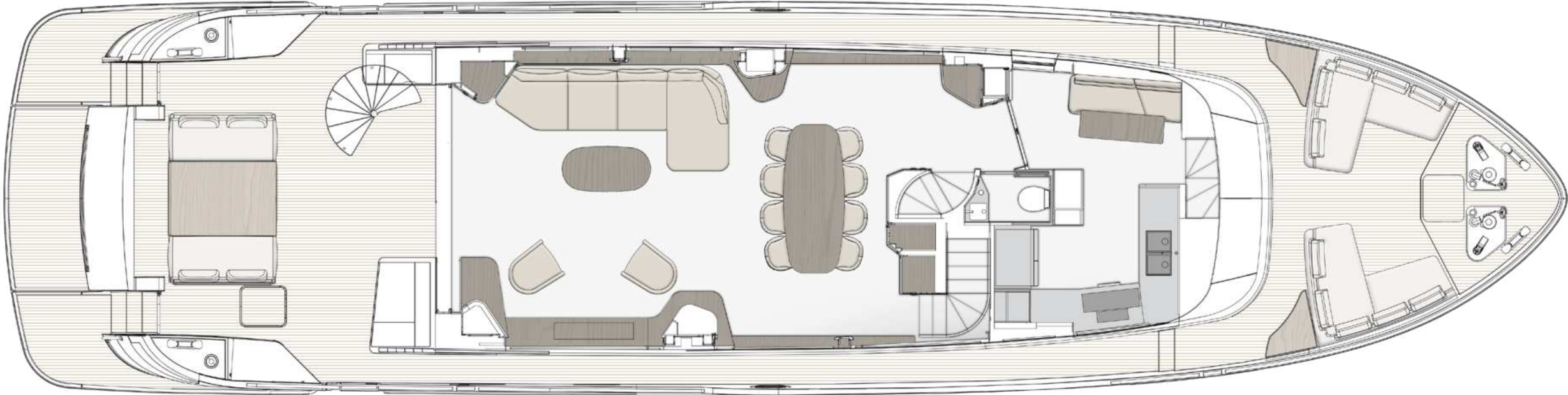


# FLYBRIDGE



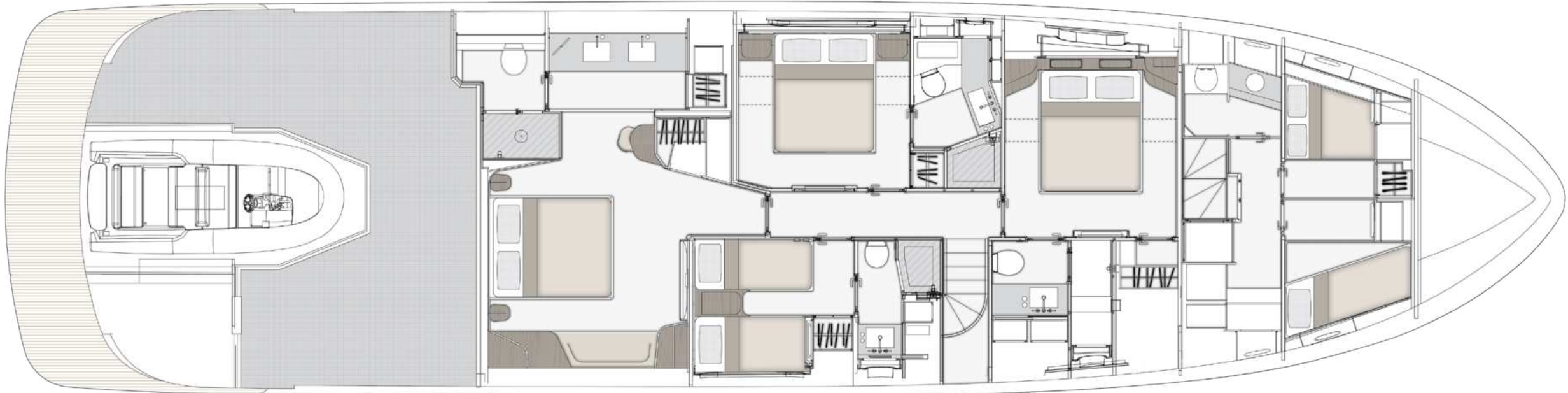


# MAIN DECK





# LOWER DECK







04

# THE MAGELLANO SERIES



# THE TIMELESS YET CONTEMPORARY CROSSOVER

Epitomizing the spirit of adventure and discovery, the Azimut Magellano Series represents a timeless yet modern-day milestone of innovation. As the first nautical crossover ever designed, its concept aims to evoke the profound relationship of sea connoisseurs with the marine habitat, accomplishing construction savoir-faire to offer tranquil, long-range journeys in all weather conditions and classically sophisticated interiors with thoughtful storage space.

Prepare to savor your time at sea, navigating the world at your own personal pace.

60  
66  
25M  
30M





05

# ABOUT AZIMUT





# A FAMILY-MADE COMPANY CULTURE

An immense and personal passion for the sea. A clear and forward-facing attitude. A strong and relentless work ethic. Since 1969, Paolo Vitelli, the creative visionary founder and businessman behind Azimut, has been set on challenging the industry's status quo with a daring desire: bring to life an unexpected nautical experience, through yachts built to combine alluring aesthetics with construction expertise and impeccable technology.

An audacious mindset that has, over time, surprised and captivated the yachting sector, transforming Azimut into a bold and recognizable benchmark, and laying the foundation for the birth of the largest megayacht builder in the world, the Azimut | Benetti Group.

The international and management-based standing of the company today, is deeply nourished by the solid and memorable family heritage that has distinguished it from the beginning. A historically pioneering vision that enables it to continue thriving day after day, through ingenious inventions and long-term goals that look to the future with Paolo's daughter, Giovanna Vitelli.



# A SUSTAINABLE VISION TODAY, FOR TOMORROW

An avant-garde vision and a strong emotional appeal have shaped the history of Azimut as a leader in the field of nautical innovation as well as its commitment to the creation of a sustainable-oriented and attentive company culture today.

An ambitious and personal touch that has allowed Azimut to grow and evolve on both levels, embracing the challenge of a future nurtured by an eco-conscious approach to boat construction and by an authentic focus and responsibility on human well-being.







# OUR ECO-YACHTING PHILOSOPHY

The Azimut I Benetti Group has made tangible investments to guide the Technical as well as the R&D departments toward the construction of yachts with a diminished environmental impact. Its main areas of intervention have focused on significantly lowering fuel consumption and CO2 emissions through the development of highly efficient hull designs, innovative propulsion systems and an extensive use of carbon fiber to decrease yacht weight.





# A SAFE AND HEALTHY WORK ENVIRONMENT

The forerunning shipyard of Avigliana was the first of the company's Italian shipyards to obtain the ISO 45001 certification in 2011, attesting its rigorous abidance to all occupational health and safety requirements. Recognized as the most technologically-advanced shipyard in Europe, it has also led the nautical sector revolution in terms of being among the earliest adopters of the vacuum infusion process to drive resin into a laminate, avoiding styrene emissions and therefore guaranteeing its precious workers a healthier setting.

As of 2013, all the other Italian production sites have adapted to meet the necessary requirements to obtain the ISO 45001 certification.





MAGELLANO 25M



AZIMUT YACHTS



# A GLOBALLY-CONNECTED DEALER AND SERVICE NETWORK

---

5 SHIPYARDS

---

6 DIRECT OFFICES

---

138 OFFICIAL DEALERS

---

80 COUNTRIES

---

The highly widespread commercial network put in place by Azimut Yachts, allows the company to offer a continuous presence to its ship owners, concretely curating their demands by meeting their most specific needs.

Find your Dealer →





# THE LARGEST PRIVATE GROUP IN THE YACHTING WORLD

Azimut is part of the Azimut | Benetti Group, the biggest private player and shipbuilder in the nautical sector today. The Vitelli family, the founder and majority shareholder of the company, has been leading the way for over fifty years now, continuing to innovate through the Group's main yacht brands, Azimut and Benetti, while developing a variety of service brands to cater to the different demands of ship owners worldwide.





# OUR SHIPYARDS MAKE US PROUD

Avigliana — Italy

HQ / SHIPYARD

Savona — Italy

DELIVERY CENTRE

Viareggio — Italy

SHIPYARD / STYLING LOUNGE

Fano — Italy

SHIPYARD

Itajaí — Brazil

SHIPYARD





CONCEPT & DESIGN: APART  
PHOTOS: ALESSANDRO GUERRIERI, MICELA LOCCI

AZIMUT YACHTS THANKS:  
APR LUXURY LINEN, DE COTIIS ARCHITECTS, LORO PIANA,  
DEDAR, PINETTI, PAOLA LENTI

OFFICIAL PARTNERS



AZIMUT | BENETTI SPA  
VIA MARTIN LUTHER KING, 9  
10051 AVIGLIANA, TORINO  
ITALY

RELEASE 02.24

This brochure in no way constitutes a contract of sale for the boatyard’s vessels to any person or company. All information contained herein, including but not limited to technical and performance data, illustrations, and drawings, is non-binding and for purposes of illustration only. The information in this brochure refers to the boatyard’s standard motoryacht models available as of the date of publication. Technical and descriptive information is valid only to the extent that it pertains to the specific vessel that is the subject of a purchase. Contract terms are valid only to the extent that they are contained in a contract of sale. This document is based on information available at the time of publication. Despite efforts to ensure the greatest possible accuracy, the information contained herein may fail to cover all details, omit technical or commercial changes that may have been made subsequent to publication, describe features that are not present, and fail to envisage all circumstances that might occur. Any illustrations, photographs, diagrams and examples shown in this brochure are included solely for the purposes of illustrating the text. Due to the different features of each vessel, the boatyard assumes no liability for actual use based on the illustrated applications.



^ZIMUT

[azimutyachts.com](https://azimutyachts.com)

