

# INDEX

01	THE DESIGN & LIFESTYLE ON BOARD	P04
02	HER MAIN TECHNICAL FEATURES	P42
03	GRANDE 32M SPEC SHEET	P47
04	THE GRANDE SERIES	P52
05	ABOUT AZIMUT	P54




A one-of-a-kind beauty, enrapturing,  
that steals your breath away, leaving you  
speechless. An extraordinary idea as the only  
possible pathway, to get to where you want,  
to explore, to go beyond.  
The freedom of embracing the unknown, that  
you know you'll love as a part of your very own  
story. A thought that provokes your mind and  
then inspires you to aim for the impossible,  
making mistakes, yet being brave.  
A magic je ne sais quoi that enchants and  
intrigues you, moving you to feel more and to  
sense uniqueness.

The choice to risk it all, the one that makes you  
go for it, to impress yourself and all those who  
are worth it.

Welcome to Azimut.

AZIMUT.  
DARE TO AMAZE.



01

# THE DESIGN & LIFESTYLE ON BOARD



# GRANDE 32M, A SYMPHONY OF FUTURISTIC DETAILS

Shaped by an ambitious vision to forge new traditions, the Azimut Grande 32M is an innovative marvel of naval architecture. Compelling and charismatic lines boldly converse with the sea, while Azimut's growing low emission philosophy further embraces the use of carbon throughout. Lavish interiors and tranquil colors encompass a fluid ideology, dedicating a special chapter to holistic wellbeing on board.

Sail into tomorrow with the Grande 32M.



[ The generous interior volumes of Grande 32M are deceptively disguised by the powerful exterior lines which sweep imperiously towards the stern. ]





[ Stefano Righini has designed powerful exterior lines that sweep steeply towards the stern, minimizing the perception of her generous interior volumes. ]



Welcome aboard, ladies and gentlemen.

Let us begin the tour.





# SHE EXPRESSES PURE AVANT-GARDE







The masterful play of lines and curves gives rise to a natural tension, which runs from the bow to the extreme stern, dressing the abundant interior volumes with a gritty and dynamic exterior design. The large full-height windows rise from the hull to the superstructure, further lightening the yacht's appearance while expanding the sense of space inside.



# A NEXT-GEN MEGAYACHT

The Azimut Grande 32 Metri is a bold and deliberate break away from the past with its graceful lines concealing avant-garde features previously unheard of in the category. Generous interior volumes are deceptively disguised by Stefano Righini's powerful exterior lines which sweep imperiously towards the stern. A touch of edgy, sporty character is added by the large full-height windows which rise up from the hull and extend into the superstructure. With its side garage accommodating a tender and jet ski, two large beach clubs in the stern and foredeck, the Azimut Grande 32 Metri is a serious wide-body megayacht.





# SHE EXPRESSES SCULPTURAL ELEGANCE



The culmination of a lifelong quest for sophisticated innovation and an unwavering commitment to pushing the boundaries, the Grande 32M represents the ultimate expression of avant-garde, both in design and technology.





[ The aft flybridge can be furnished as an additional lounge area or with a hydromassage tub and sun lounging area. ]





Nestled between sky and sea, the flybridge has a usable surface area of almost 70 square meters (750 square feet) and consists of three areas: a bow space designed for dining, a central section destined as a living room, and a stern area which can either accommodate a hydromassage tub and sun lounging area or can be utilized as a second lounge zone.





GRANDE 32M



AZIMUT YACHTS



# WHATEVER YOU NEED WHEREVER YOU ARE

The transom opens right onto the sea, revealing a sheltered beach club of nearly 18 square meters. It's an all-day social oasis, and the closest one to the waves. This has been made possible by the side garage, which frees this charming space just above the sea's scintillating surface.







GRANDE 32M



AZIMUT YACHTS



# SURROUNDED BY SEA

A light architectural touch frames the wonder of the sea.  
Each element flows seamlessly into the next, with a complete  
absence of sharp angles and edges. The colours unfold softly  
and naturally to create a serene, refined atmosphere.











[ An encompassing sense of harmony rules all the ambiances. The atmosphere gently combines a warmly accommodating area embellished by a polished feel and suspended furnishings with an evolved concept of wellness. ]



# AN ENSEMBLE OF FLOWING AMBIENCES



Spatial composition is the guiding principle of the interiors of the Grande 32M with architect Achille Salvagni eschewing pure décor and creating a series of contrasts to delineate the various spaces. Polished dark surfaces and ceiling details play off against lighter coloured woods whilst full and empty spaces are juxtaposed against each other and handpicked pastel elements provide a subtle counterpoint to luxurious butter-colored leather surfaces. Painstaking research lies behind even the smallest detail, with all coming together to create a soothing atmosphere of complete and total relaxation.



# HARMONIC SHAPES

Ambiances are gracefully redefined through the adoption of a fluid and streamlined style, leaving behind traditional ideas and the preconceived constraints of typical spatial divisions. Purity and cleanliness characterize every line, while the subtlety of a peaceful palette intensifies the feeling of relaxation.





[ Every single piece of furniture on board is specially-designed, the superfluous removed so as to let tactile and visual pleasure define the living areas. ]



GRANDE 32M



AZIMUT YACHTS



# A BESPOKE FRAME FOR THE SEA

The interiors transcend simple decoration, focusing on the composition of the space: free-flowing surfaces detach from the walls, becoming design elements in their own right; soft lines and organic geometries liquify the environments, welcoming and relaxing the ambience; the total project is charmed by a distinctive style and an independent mind.









# FLUID AMBIENCES

Each element flows gently in a unique, fluid and cozy environment. The walls embrace one another, like a succession of negatives and positives that define and expand space.







GRANDE 32M



AZIMUT YACHTS

Now, let us discover the guest accommodations.

Shall we?





# NO BORDERS JUST HORIZONS







The full-height windows in the owner's suite offer extraordinary views of the sea and an expanded perception of space. Every precious detail shines under the flood of natural light that follows.









[ Every single piece of furniture on board is specially designed, the superfluous removed so as to let tactile and visual pleasure define the living areas. ]





# YOUR PRIVATE SPA

An encompassing sense of harmony rules the master suite. In a specially curated concoction, the atmosphere gently combines a warmly accommodating area embellished by a polished feel and suspended furnishings with an evolved concept of wellness. As a natural extension of the cabin, the bathroom evolves the idea of comfort and relaxation, evoking a sensation of pervading pleasure.







GRANDE 32M



AZIMUT YACHTS





[ The Lower Deck is given over to the guest accomodations, containing two generous VIP cabins, both with double beds. ]









# A STORY OF MOVEMENT AND FLUIDITY





[ The Grande 32M has a Raised Pilot House on an elevated half-deck between the Main Deck and the Flybridge. ]



GRANDE 32M




AZIMUT YACHTS









02

# HER MAIN TECHNICAL FEATURES



The beauty of the Grande 32M is not solely a matter of exterior and interior design elements that combine to perfectly play out Azimut's essence. Her beauty lies also in discovering the technological advancements and special components that contribute to making her truly unique and highly innovative.





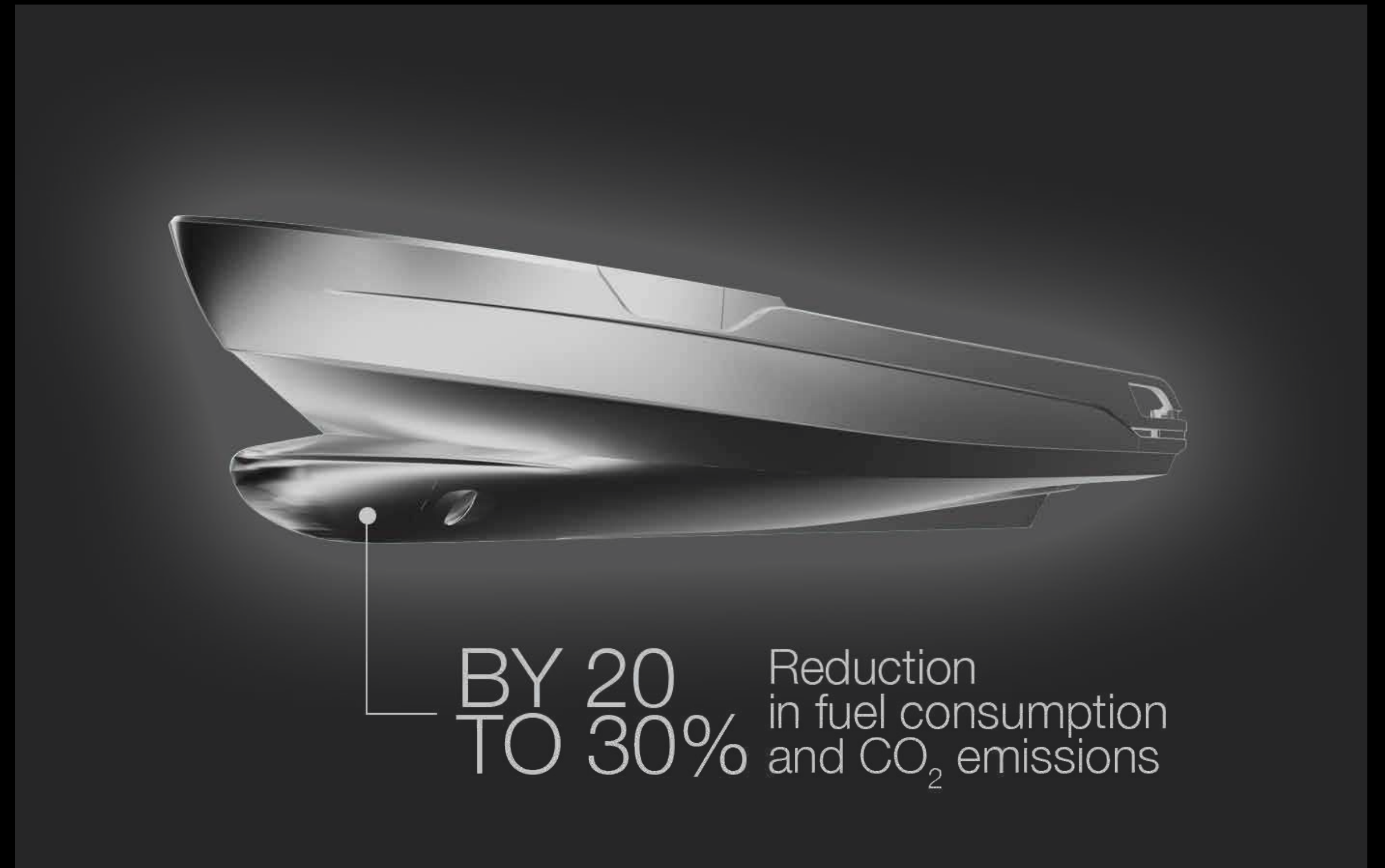
# LOW EMISSION YACHT



## D2P DISPLACEMENT TO PLANING HULL

The high-efficiency D2P® Displacement-to-Planing hull, combined with the extensive use of carbon fiber, reduces fuel consumption and CO<sub>2</sub> emissions by 20 to 30%\* at both slow and fast cruising speeds. The double chine hull comes to a wave piercer at the bow, minimizing the impact of sea conditions while increasing the waterline length and therefore reducing drag.

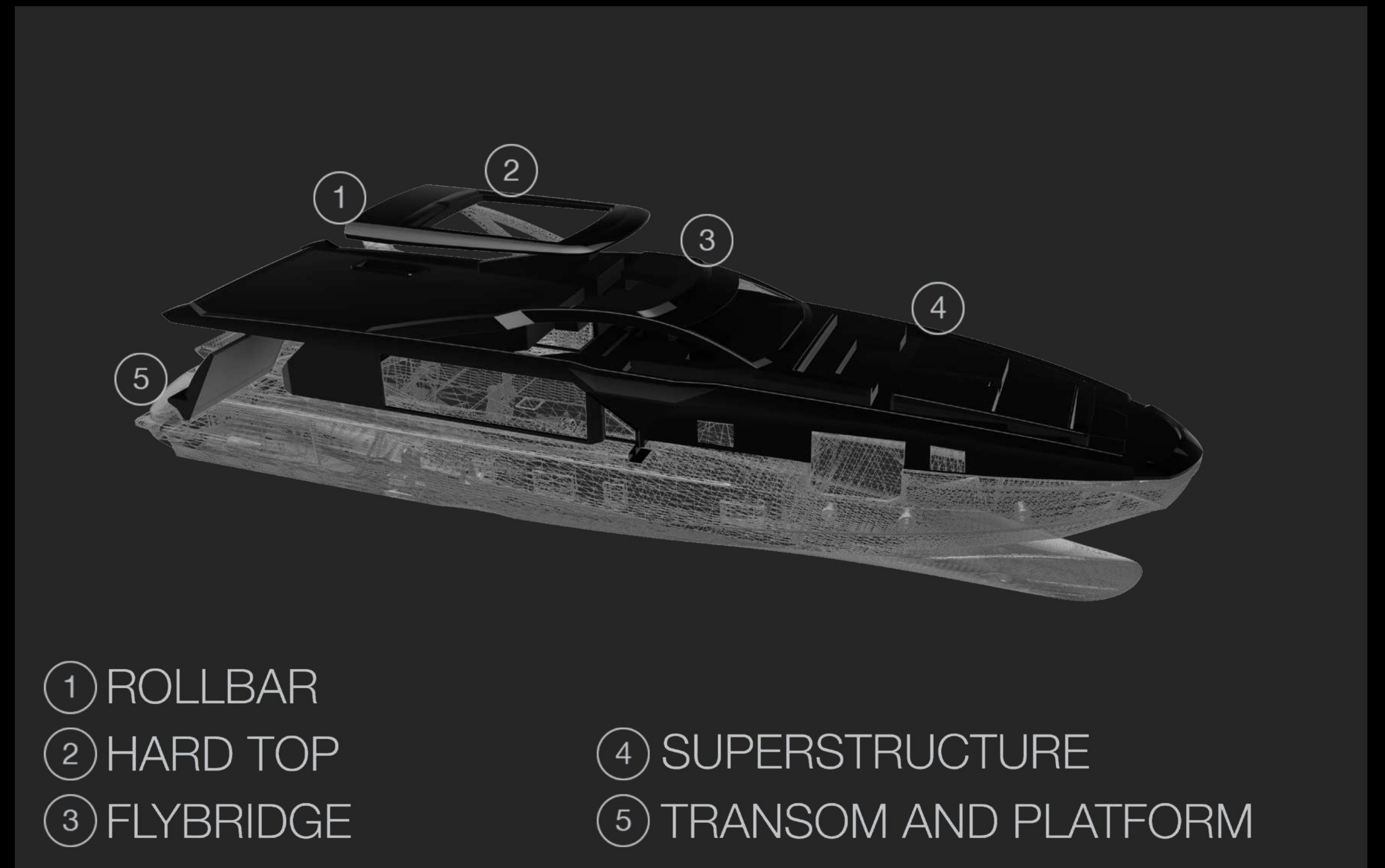
\*compared to vessels of the same weight and size with a traditional hard-chine hull.





# CARBON-TECH GENERATION

Azimut's pioneering use of carbon fiber lamination goes beyond pure performance. The Carbon Tech Generation offers expanded volumes on board, while maintaining excellent dynamic stability and perfect handling. Preserving the yacht's low center of gravity, the carbon fiber was focused on the upper parts of the yacht, lightening the laminated components by up to 30% and reducing the natural roll momentum up to 15%.



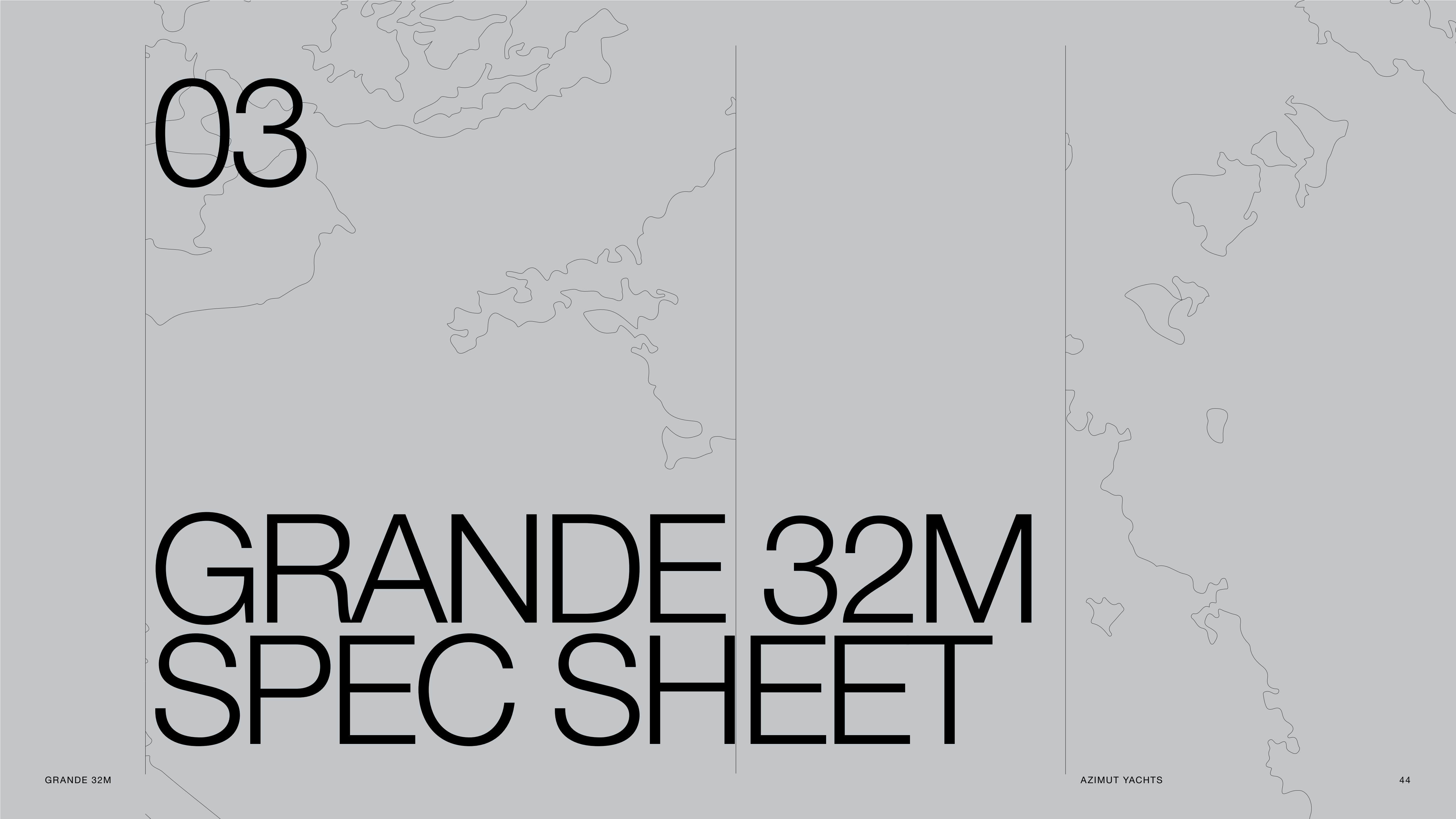


# ADVANCED STABILIZATION SYSTEM

The new Waveless STAB™ 40 electric stabilizing fins by CMC Marine combine performance and silence in a compact system, which guarantees low power draw and instantaneous stop and start.







03

# GRANDE 32M SPEC SHEET



# GENERAL CHARACTERISTICS

LENGTH OVERALL	32 m	105’
BEAM MAX	7,30 m	23’ 11”
DRAFT	1,9 m	6’ 4”
DISPLACEMENT	136 t	299826 lb
ENGINES	2 x MTU 2.200 hp	
MAXIMUM SPEED	up to 27 kn	
CRUISING SPEED	up to 21 kn	
KEEL	D2P Displacement to Planing	
FUEL CAPACITY	16000 l	4227 US Gal
WATER CAPACITY	2200 l	581 US Gal
CABINS	5 + 3 crew	
BERTHS	10 + 5 crew	
HEAD COMPARTMENTS	6 + 3 crew	
BUILDING MATERIAL	Carbon Fibre + GRP	
EXTERIOR DESIGNER	Stefano Righini	
INTERIOR DESIGNER	Achille Salvagni Architetti	
HULL DESIGNER	P.L. AUSONIO Naval Architecture & Azimut R&D Dept.	
BUILDER	Azimut Yachts	
CERTIFICATIONS	Structural project compliant with Rina Class Pleasure Certificate (certificate upon request as optional)	

Last updated 04.2023  
Please consult your dealer for the latest specifications.

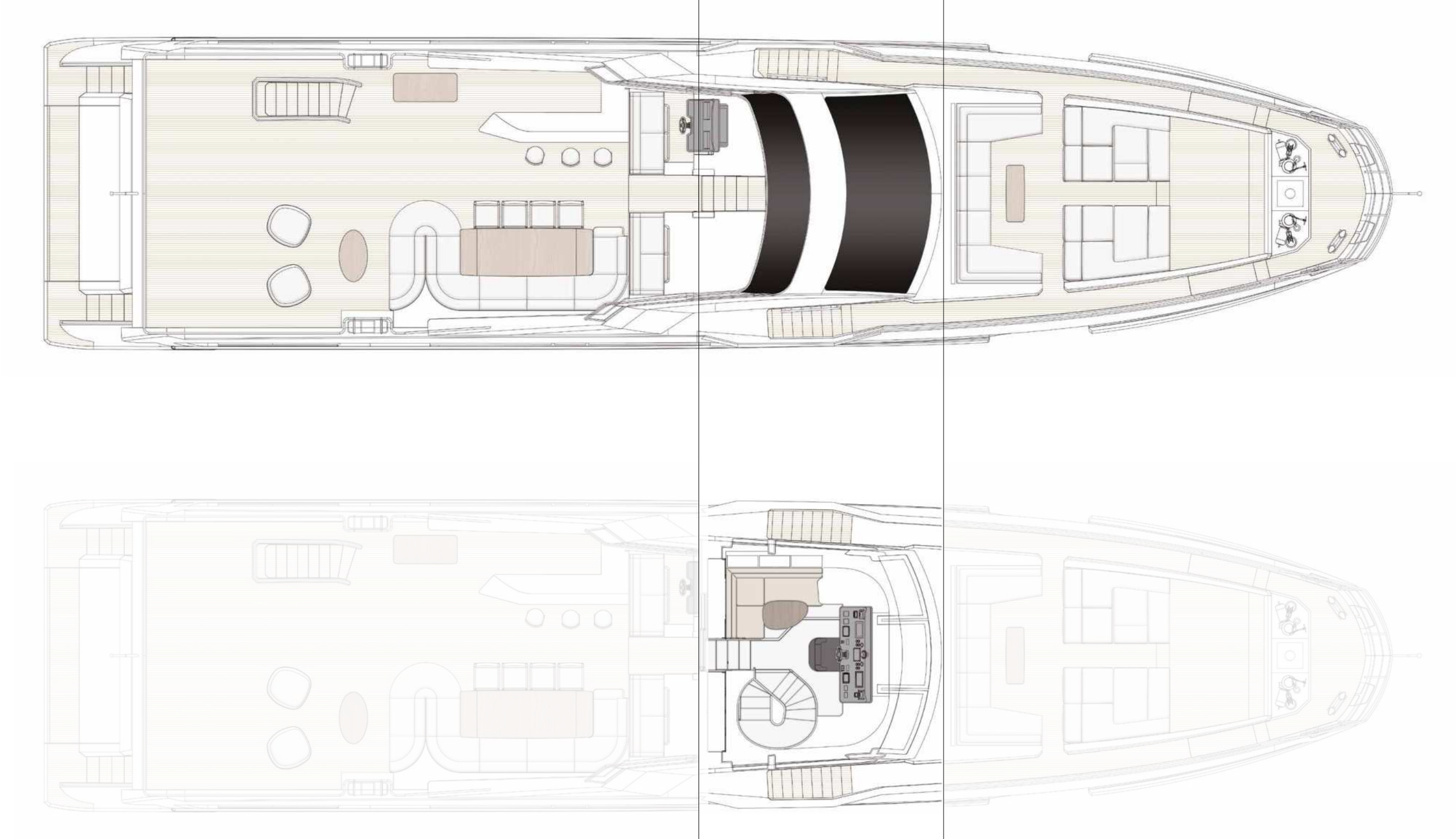
UNI ISO 8666  
The performance described applies to a vessel with standard configuration (standard equipment installed) and a clean hull, propellers, and rudder. It is also noted that the performance described was recorded under favourable sea and wind conditions (Beaufort scale index 1, Douglas scale index 1); different and worse sea conditions could significantly impact performance.

CE MARK  
Given the continual evolution of technology, Azimut | Benetti S.p.A reserves the right to modify the technical specifications on its vessels at any time and without prior notice.



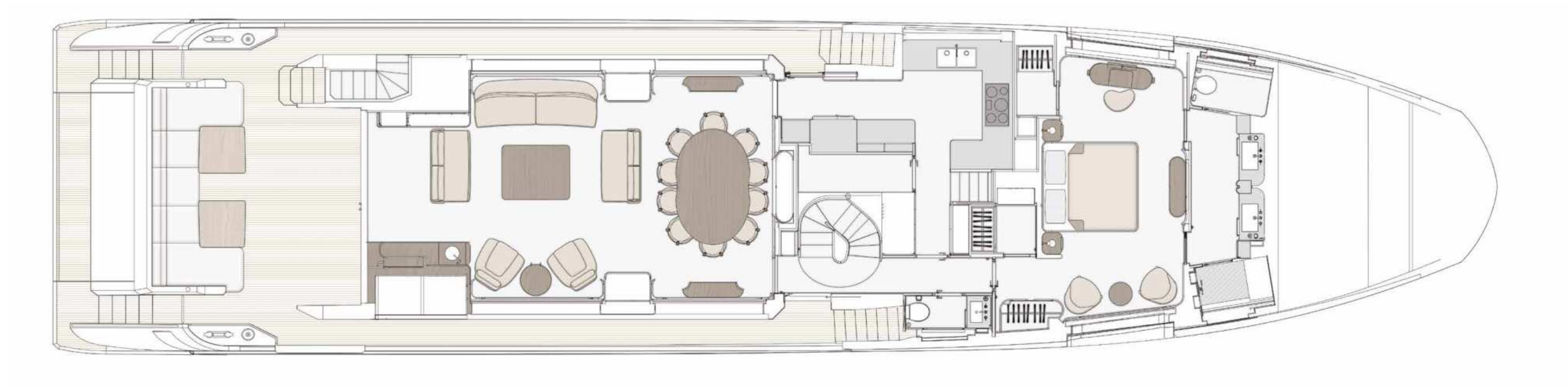
# FLYBRIDGE

RAISED PILOT HOUSE



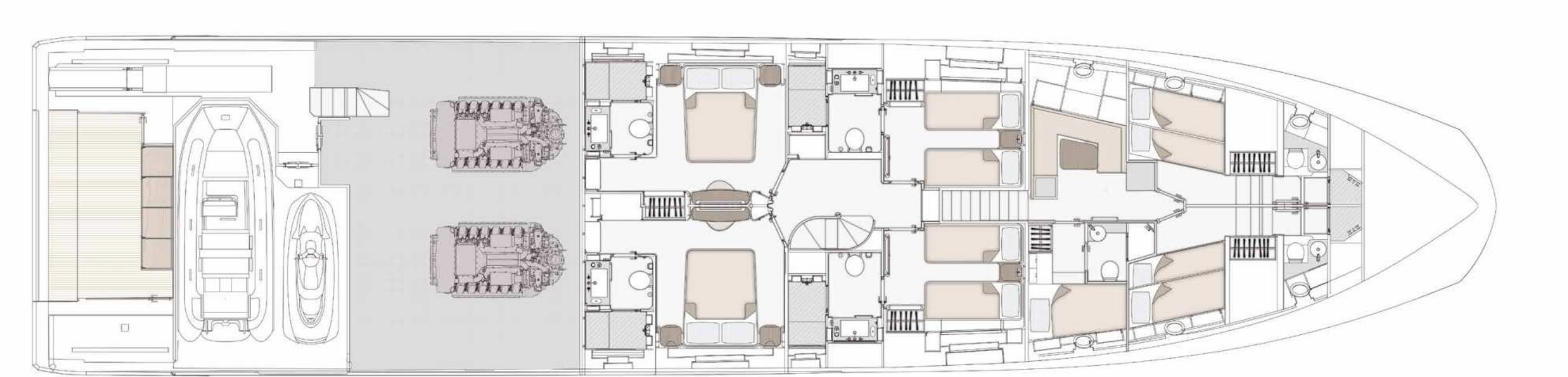


# MAIN DECK





# LOWER DECK







04

# THE GRANDE SERIES



# A FASCINATING VOYAGE THROUGH INNOVATION

Inspired by an affinity for grandeur, the Azimut Grande Series is a unique and emotional ensemble of Azimut's most pioneering inspiration and constructive flair, a spectacular collection of works of art that combines advanced technology with engineering mastery. Visionary design, punctuated by surprising innovation, reimagines the function of space and revolutionizes lifestyle onboard, while exclusively curated ambiances express the creative touch and aesthetic of authentic Made in Italy.

Savor the magnificence of futuristic ingenuity.

26M

27M

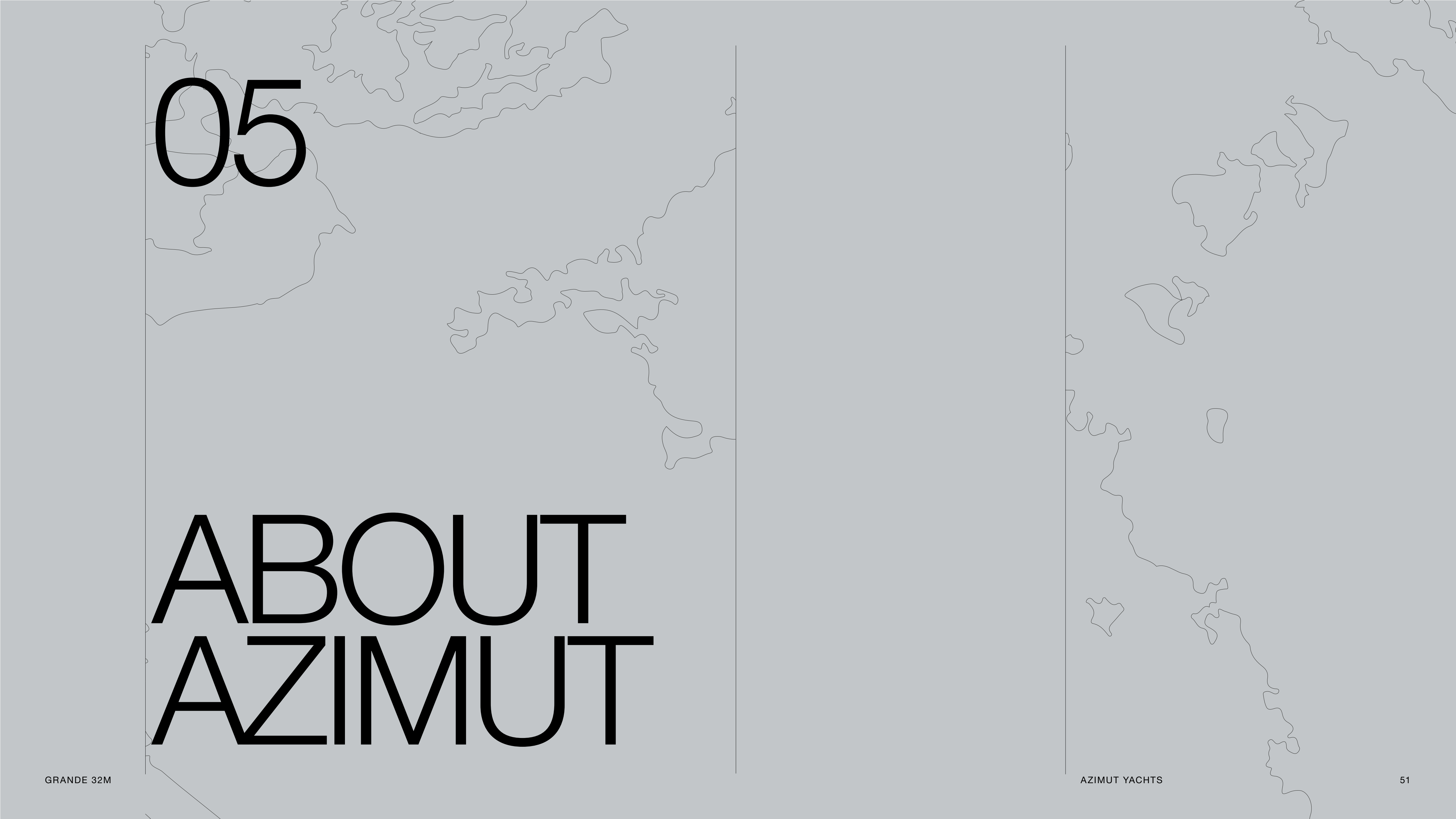
32M

36M

TRIDECK







05

# ABOUT AZIMUT





# A FAMILY-MADE COMPANY CULTURE

An immense and personal passion for the sea. A clear and forward-facing attitude. A strong and relentless work ethic. Since 1969, Paolo Vitelli, the creative visionary founder and businessman behind Azimut, has been set on challenging the industry's status quo with a daring desire: bring to life an unexpected nautical experience, through yachts built to combine alluring aesthetics with construction expertise and impeccable technology.

An audacious mindset that has, over time, surprised and captivated the yachting sector, transforming Azimut into a bold and recognizable benchmark, and laying the foundation for the birth of the largest megayacht builder in the world, the Azimut | Benetti Group.

The international and management-based standing of the company today, is deeply nourished by the solid and memorable family heritage that has distinguished it from the beginning. A historically pioneering vision that enables it to continue thriving day after day, through ingenious inventions and long-term goals that look to the future with Paolo's daughter, Giovanna Vitelli.



# A SUSTAINABLE VISION TODAY, FOR TOMORROW

An avant-garde vision and a strong emotional appeal have shaped the history of Azimut as a leader in the field of nautical innovation as well as its commitment to the creation of a sustainable-oriented and attentive company culture today.

An ambitious and personal touch that has allowed Azimut to grow and evolve on both levels, embracing the challenge of a future nurtured by an eco-conscious approach to boat construction and by an authentic focus and responsibility on human well-being.







# OUR ECO-YACHTING PHILOSOPHY

The Azimut I Benetti Group has made tangible investments to guide the Technical as well as the R&D departments toward the construction of yachts with a diminished environmental impact. Its main areas of intervention have focused on significantly lowering fuel consumption and CO2 emissions through the development of highly efficient hull designs, innovative propulsion systems and an extensive use of carbon fiber to decrease yacht weight.





# A SAFE AND HEALTHY WORK ENVIRONMENT

The forerunning shipyard of Avigliana was the first of the company's Italian shipyards to obtain the ISO 45001 certification in 2011, attesting its rigorous abidance to all occupational health and safety requirements. Recognized as the most technologically-advanced shipyard in Europe, it has also led the nautical sector revolution in terms of being among the earliest adopters of the vacuum infusion process to drive resin into a laminate, avoiding styrene emissions and therefore guaranteeing its precious workers a healthier setting.

As of 2013, all the other Italian production sites have adapted to meet the necessary requirements to obtain the ISO 45001 certification.





GRANDE 32M



AZIMUT YACHTS



# A GLOBALLY-CONNECTED DEALER AND SERVICE NETWORK

---

5 SHIPYARDS

---

6 DIRECT OFFICES

---

138 OFFICIAL DEALERS

---

80 COUNTRIES

---

The highly widespread commercial network put in place by Azimut Yachts, allows the company to offer a continuous presence to its ship owners, concretely curating their demands by meeting their most specific needs.

Find your Dealer →





# THE LARGEST PRIVATE GROUP IN THE YACHTING WORLD

Azimut is part of the Azimut | Benetti Group, the biggest private player and shipbuilder in the nautical sector today. The Vitelli family, the founder and majority shareholder of the company, has been leading the way for over fifty years now, continuing to innovate through the Group's main yacht brands, Azimut and Benetti, while developing a variety of service brands to cater to the different demands of ship owners worldwide.





# OUR SHIPYARDS MAKE US PROUD

Avigliana — Italy

HQ / SHIPYARD

Savona — Italy

DELIVERY CENTRE

Viareggio — Italy

SHIPYARD / STYLING LOUNGE

Fano — Italy

SHIPYARD

Itajaí — Brazil

SHIPYARD







CONCEPT & DESIGN: APART  
PHOTOS: PAOLO PETRIGNANI, SARA MAGNI,  
GIOVANNI MALGARINI, ALESSANDRO GUERRIERI

AZIMUT YACHTS THANKS:  
ACHILLE SALVAGNI ARCHITETTI, ALDUE, FRETTE, SARTORIA  
MATTEI, CATTINA, CALIBAN

OFFICIAL PARTNERS



GARMIN

NAVICO  
GROUP

Raymarine

SEAKEEPER

VOLVO  
PENTA

AZIMUT | BENETTI SPA  
VIA MARTIN LUTHER KING, 9  
10051 AVIGLIANA, TORINO  
ITALY

RELEASE 01.24

This brochure in no way constitutes a contract of sale for the boatyard's vessels to any person or company. All information contained herein, including but not limited to technical and performance data, illustrations, and drawings, is non-binding and for purposes of illustration only. The information in this brochure refers to the boatyard's standard motoryacht models available as of the date of publication. Technical and descriptive information is valid only to the extent that it pertains to the specific vessel that is the subject of a purchase. Contract terms are valid only to the extent that they are contained in a contract of sale. This document is based on information available at the time of publication. Despite efforts to ensure the greatest possible accuracy, the information contained herein may fail to cover all details, omit technical or commercial changes that may have been made subsequent to publication, describe features that are not present, and fail to envisage all circumstances that might occur. Any illustrations, photographs, diagrams and examples shown in this brochure are included solely for the purposes of illustrating the text. Due to the different features of each vessel, the boatyard assumes no liability for actual use based on the illustrated applications.



^ZIMUT

[azimutyachts.com](http://azimutyachts.com)

