

^ZIMUT



INDEX

01	WELCOME TO AZIMUT	P03
02	THE DESIGN & LIFESTYLE ON BOARD	P04
03	HER MAIN TECHNICAL FEATURES	P35
04	FLY 62 SPEC SHEET	P40
05	THE FLY SERIES	P45
06	ABOUT AZIMUT	P47



A one-of-a-kind beauty, enrapturing,
that steals your breath away, leaving you
speechless. An extraordinary idea as the only
possible pathway, to get to where you want,
to explore, to go beyond.
The freedom of embracing the unknown, that
you know you'll love as a part of your very own
story. A thought that provokes your mind and
then inspires you to aim for the impossible,
making mistakes, yet being brave.
A magic je ne sais quoi that enchants and
intrigues you, moving you to feel more and to
sense uniqueness.

The choice to risk it all, the one that makes you
go for it, to impress yourself and all those who
are worth it.

Welcome to Azimut.

AZIMUT.
DARE TO AMAZE.



02

THE DESIGN & LIFESTYLE ON BOARD

FLY 62, CHASING HORIZONS

The exterior design by Alberto Mancini redefines the canons of the category with inspiration from the latest trends in the automotive world and the functional and aesthetic revolution of SUVs. The volumes of the Fly 62 superstructure move slightly forward, allowing the cockpit to develop while maintaining and evolving the sporty stylistic figure of the Fly Series: lines that chase each other across increasingly clean surfaces.



[Scan the QR Code to see the model brochure]



A GAZE TOWARDS THE SEA

Welcome aboard, ladies and gentlemen.

Let us begin the tour.



THE BEACH COCKPIT: EMBRACING THE SEA





The deep desire to experience the sea, celebrated by masterful design: the Fly 62 revolutionizes the world of flybridges with unprecedented proximity to the water. The Beach Cockpit is born, a re-imagined cockpit that turns towards the sea, opening into a large sunbathing area without physical or visual barriers. Turn your gaze to the sea with the Fly 62.



BOUNDLESS BLUE

On board the Fly 62, you can have lunch facing the sea and you can live immersed in nature through spaces designed to accommodate various generations and activities. Some rest in the shade and some swim, others have an aperitif and the rest sunbathe – all while maintaining the sense of sharing those moments.



The transom opens outwards, and, with a synchronous movement, the sofa is lowered, eliminating all physical barriers, creating the Beach Cockpit: a large sunbathing area close to the water with a connection to the sea that is unique.



GRAND HORIZONS



[In its standard configuration, the cockpit of the Fly 62 transforms into the Grand Terrace, offering an elegant, uninterrupted view of the sea. This inviting outdoor lounge is enclosed by a transparent frame and features generous space for free-standing furniture, a hi-lo table, and a C-shaped sofa facing aft. This configuration provides additional onboard storage, thanks to the spacious floor compartment designed to accommodate water toys and seabobs.]



[The new hardtop stands out for its hyper-modern lines, which blend with the linearity that characterises the horizontal development of the hull windows.]





OPEN-SPACE LIVING, ON TOP OF THE WORLD

The flybridge level is a unique open-air zone, presenting three separate but seamless habitats to be enjoyed with heightened privacy. Sunbathing in proximity of the wheelhouse forward, lunching or barbecuing with the informal luxe of a bar cabinet, and socializing aft on sunpads or sofas, are all the experiences that the flybridge of the Fly 62 offers at a whole new level.



[A cozy relaxation corner offers the perfect spot to take in the breathtaking view from the highest point of the yacht.]



[Whether it's dining with friends, enjoying a cruise or sunbathing in silence, the Fly 62's flybridge is the ultimate place to relax.]





EVERY MOMENT IS SHARED WITH NATURE



[No longer just a place for sunbathing, the bow on board Fly 62 is a dynamic space that adapts to your needs throughout the day. Whether you seek a shaded retreat for effortless conversations under the bimini top or a stylish setting for sunset drinks, this space is designed to enhance every moment on board.]



BETWEEN LINEARITY AND SOFTNESS



Architect Fabio Fantolino designed the Fly 62 lounge with soft hues and flowing lines to create a sense of spaciousness and a close connection to the sea. This thoughtful approach transforms the area into a welcoming second lounge at water level, enhancing life on the main deck from morning to night. The coffee table smoothly rises and expands, converting into a dining table for six to enjoy lunch or dinner.



[Soft fabrics, warm wood tones, and matte bronze accents adding to the welcoming glow guests feel.]



The Fly 62 was conceived as an oasis of elegance and functionality, a retreat that ensures a harmonious connection between interior and exterior. The layout is designed to be both functional and comfortable, while preserving a sense of space and airiness.



The galley is located across from the dining, offering easy access to the saloon, the cockpit, and the flybridge. It's equipped with high-end appliances and abundant storage for all your culinary needs. The layout assigns a central role to food and drinks, appreciated whether you're hosting a dinner party or enjoying a casual breakfast at sea.



[For enhanced docking, maneuvering and autopilot management, the pilot is given a joystick in addition to the traditional wheel and thrust controls. The helm station is positioned for excellent visibility, ensuring that both the captain and a copilot can enjoy cruising, even indoors.]

HELM & TECHNOLOGY

The Fly 62 is equipped with cutting-edge technology, including a full suite of Garmin electronics and integrated Volvo IPS controls, making it easier than ever to check numbers, alerts and settings related to the engines, while reducing dashboard clutter.





Let us discover the guest accomodations.

Shall we?





AN ENHANCED SENSE OF SUITE-NESS



The full-beam owner's suite is a private retreat, complete with wrapping hull windows that bring the sea inside. The king-sized bed is positioned to maximize the views, while the warm wood tones and soft lighting create a serene atmosphere.

YOUR WARM RETREAT

The owner's suite features a private bathroom where light wood predominates, adding warmth to the ambiance. Niches with bronzed bottoms enhance the space with a touch of elegance and sophistication, completing the exclusive atmosphere.






REFINED COMFORT

The lower deck also features two beautifully appointed guest cabins. The VIP cabin, located at the bow, stands out with its organic design, seamlessly adapting to the boat's geometries and curves.



[The second guest cabin features twin beds. Both cabins are equipped with large windows, en suite bathrooms, and high-end finishes, ensuring an exceptional level of comfort for your guests.]





03

HER MAIN TECHNICAL FEATURES

The beauty of the Fly 62 is not solely a matter of exterior and interior design elements that combine to perfectly play out Azimut's essence. Her beauty is also about discovering the technological advancements and special components that contribute to making her truly unique and highly innovative.

ACTIVE TRIM CONTROL

Automated interceptors optimize the trim at every speed to maintain ideal hydrodynamics for performance and efficiency, at the same time negating any lateral imbalance due to sidewinds or weight distribution. With the pilot's peace of mind assured, the driving experience is simpler and more enjoyable.



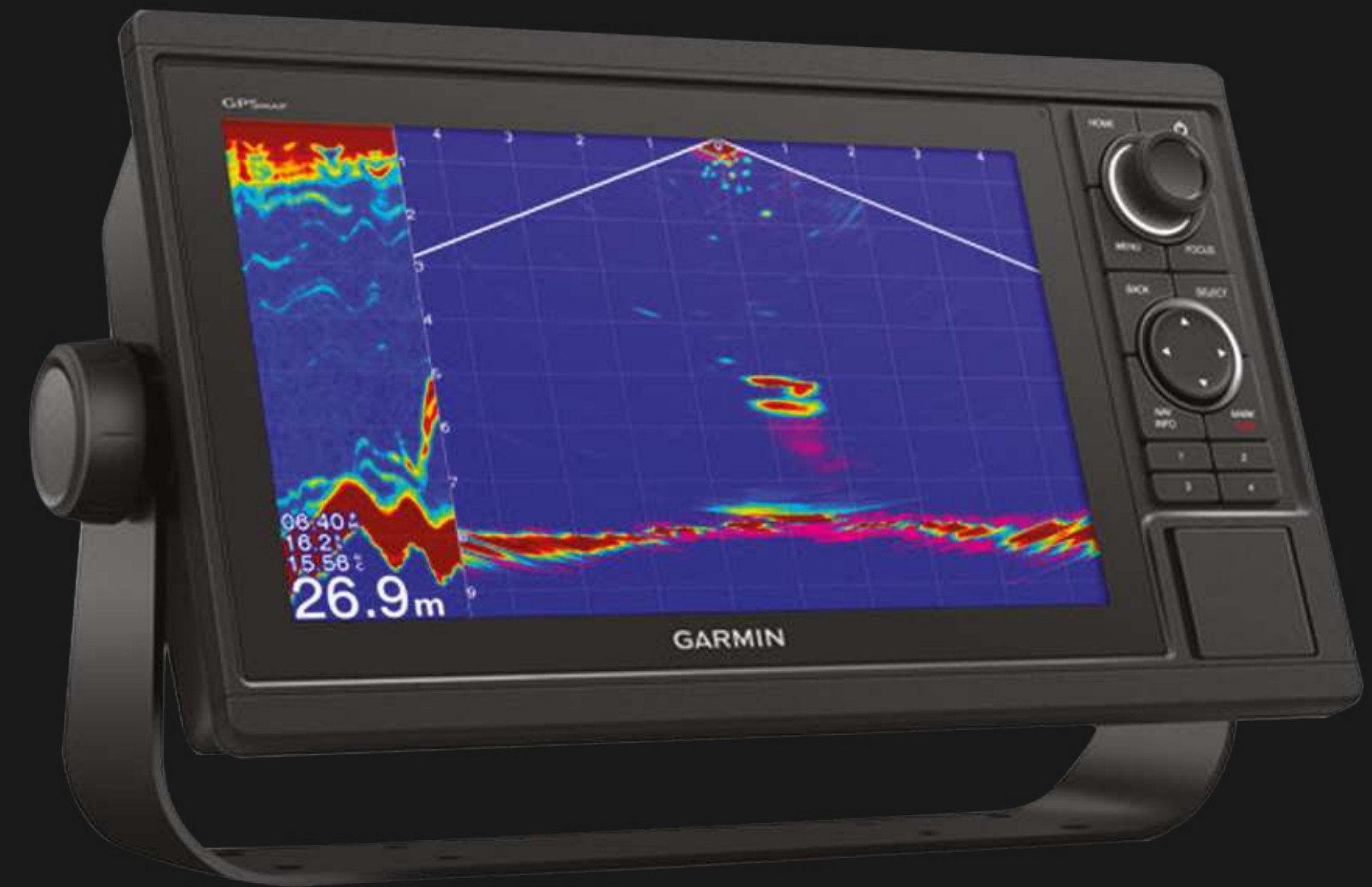
JOYSTICK DRIVING

The Joystick acts as an analog for the yacht, offering intuitive, one-handed control in every situation. When the yacht is stopped, moving the Joystick forward or back, side to side, and twisting clockwise or counter-clockwise activates the engines to mimic that motion. It's the easiest way to pull off precise maneuvers. When Joystick Driving is activated, the autopilot is immediately engaged. For easy course correction, the driver may briefly twist the Joystick for 1 degree in that direction or twist and hold for 10 degrees. The Autopilot keeps a forward course after the Joystick is released.



INTEGRATED CONTROL AND MONITORING SYSTEM

The custom-installed Garmin electronics have been integrated to control and monitor every onboard system: from engines and alarms, to bilge and water discharge pumps, tank levels and engine room ventilation, right through to the sound system and the air conditioning units. The system can be accessed on board from both the interior and exterior helm stations and, with the mobile app, remotely from a tablet or smartphone.



04

FLY 62 SPEC SHEET

GENERAL CHARACTERISTICS

LENGTH OVERALL	19,22 m	63’ 1”
BEAM MAX	5,09 m	16’ 8”
DRAFT	1,63 m	5’ 4”
DISPLACEMENT	39 t	85979 lb
ENGINES	2 x VOLVO PENTA IPS 1200 - 900 hp - 2 x VOLVO PENTA IPS 1350 - 1000 hp (OPT)	
MAXIMUM SPEED	Up to 30 kn - Up to 32 kn (OPT)	
CRUISING SPEED	Up to 25 kn - Up to 26 kn (OPT)	
KEEL	V Planning - Deadrise 17.2° at the stern - Deadrise 22° amidships	
FUEL CAPACITY	2800 l	740 US Gal
WATER CAPACITY	750 l	199 US Gal
CABINS	3 + 1 crew	
BERTHS	6 + 2 crew	
HEAD COMPARTMENTS	3 + 1 crew	
BUILDING MATERIALS	GRP	
EXTERIOR DESIGNER	Alberto Mancini	
INTERIOR DESIGNER	Fabio Fantolino	
HULL DESIGNER	In collaboration with MICAD & R&D Azimut Dept.	
BUILDER	Azimut Yachts	

- Main technical features

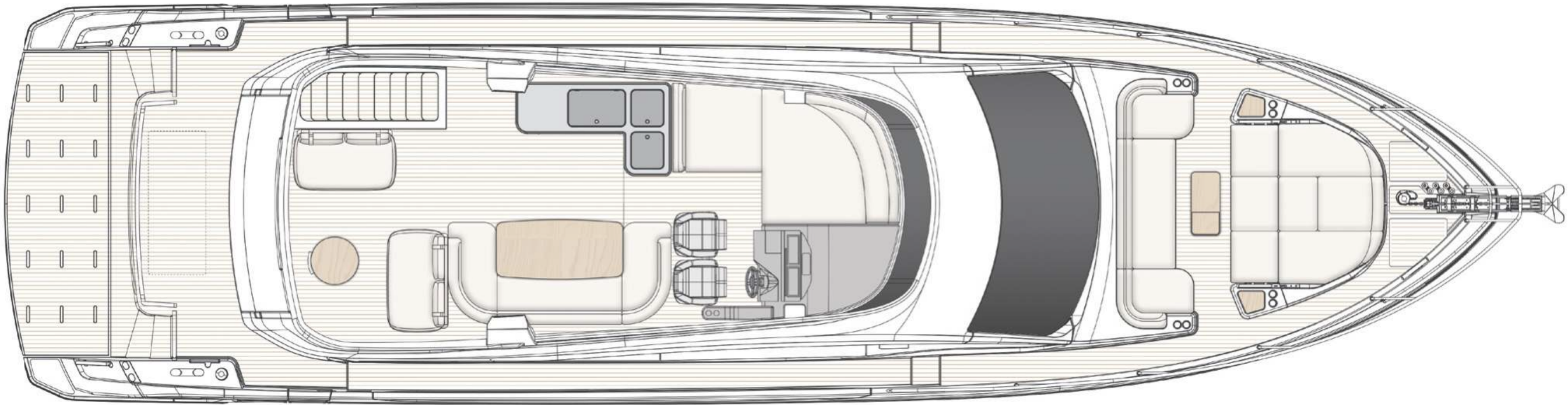
· ACTIVE TRIM CONTROL · ADVANCED JOYSTICK DRIVING · INTEGRATED CONTROL AND MONITORING SYSTEM

Last updated 5.2025
Please consult your dealer for the latest specifications.

UNI ISO 8666
The performance described applies to a vessel with standard configuration (standard equipment installed) and a clean hull, propellers, and rudder. It is also noted that the performance described was recorded under favourable sea and wind conditions (Beaufort scale index 1, Douglas scale index 1); different and worse sea conditions could significantly impact performance.

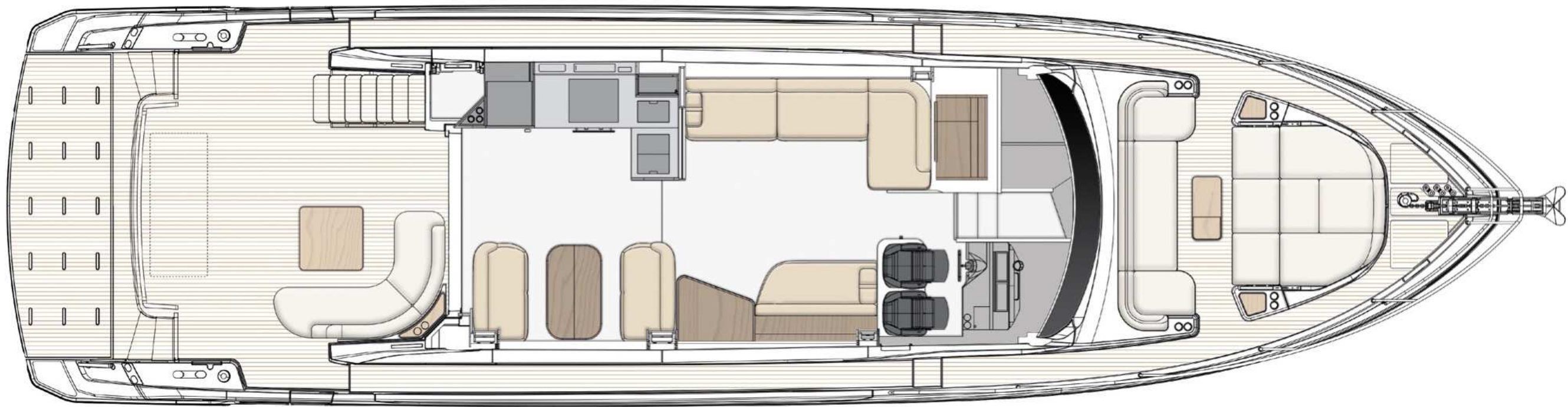
CE MARK
Given the continual evolution of technology, Azimut | Benetti S.p.A reserves the right to modify the technical specifications on its vessels at any time and without prior notice.

FLYBRIDGE

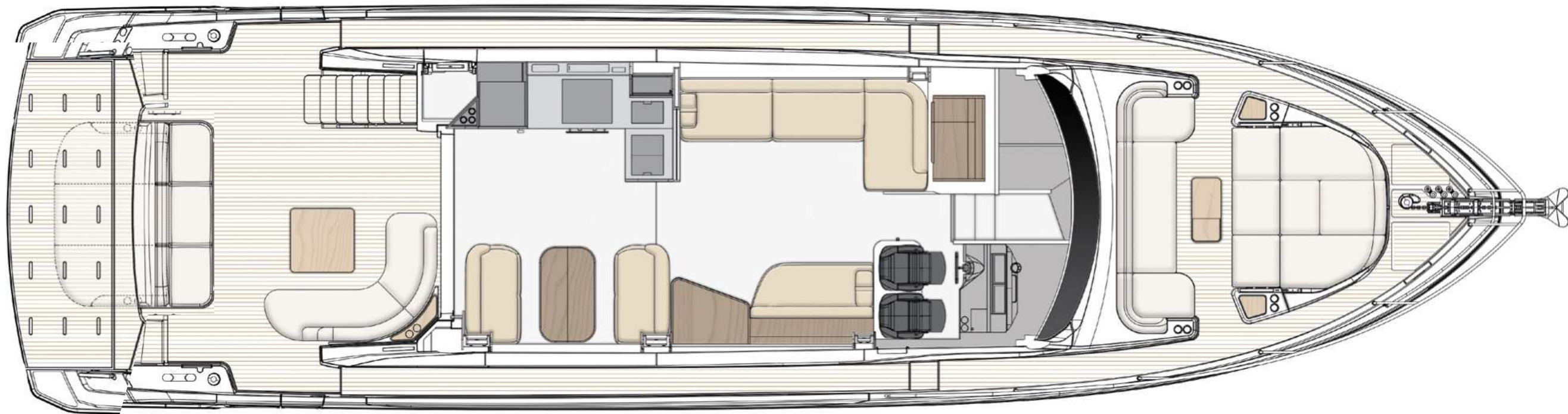


MAIN DECK

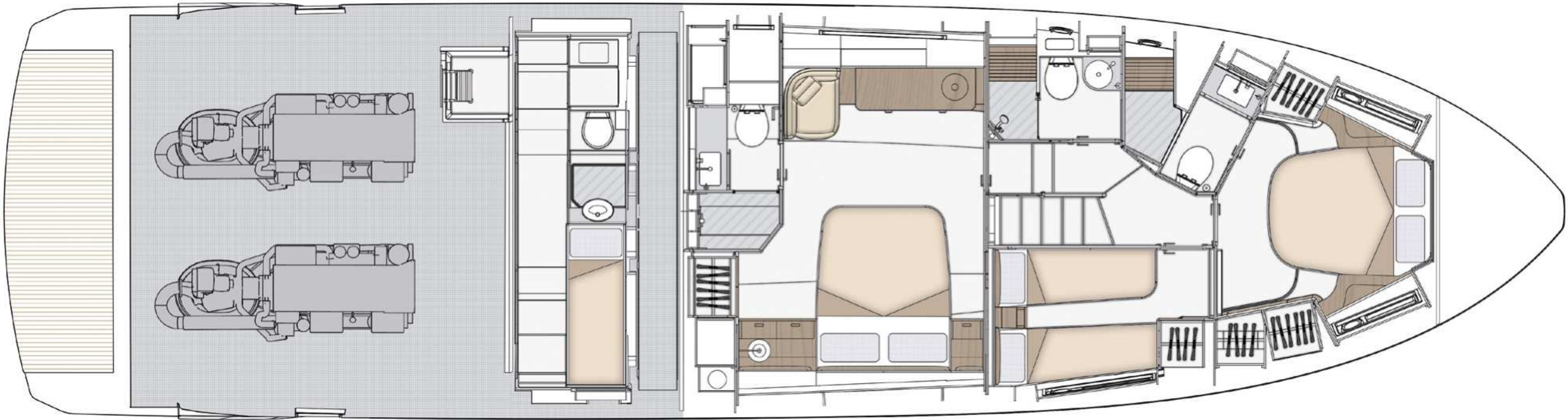
TERRACE
VERSION



BEACH COCKPIT
VERSION



LOWER DECK



05

THE FLY SERIES

A VISUALLY IMMERSIVE EXPERIENCE

A barrierless and illuminated experience, the iconic Flybridge boat series was forged out of tradition to immerse its guests in the sea, while inspiring the unique feeling of open-air freedom. Sleek and spacious all-Italian interiors are bound to create a sensational atmosphere, filling days and nights with charming comfort and lightness.

Experience yesterday's game-changer spirit upped by today's avant-garde air.

53
62
68
72
78



06

ABOUT AZIMUT



A FAMILY-MADE COMPANY CULTURE

An immense and personal passion for the sea. A clear and forward-facing attitude. A strong and relentless work ethic. Since 1969, Paolo Vitelli, the creative visionary founder and businessman behind Azimut, has been set on challenging the industry's status quo with a daring desire: bring to life an unexpected nautical experience, through yachts built to combine alluring aesthetics with construction expertise and impeccable technology.

An audacious mindset that has, over time, surprised and captivated the yachting sector, transforming Azimut into a bold and recognizable benchmark, and laying the foundation for the birth of the largest megayacht builder in the world, the Azimut | Benetti Group.

The international and management-based standing of the company today, is deeply nourished by the solid and memorable family heritage that has distinguished it from the beginning. A historically pioneering vision that enables it to continue thriving day after day, through ingenious inventions and long-term goals that look to the future with Paolo's daughter, Giovanna Vitelli.

A SUSTAINABLE VISION TODAY, FOR TOMORROW

An avant-garde vision and a strong emotional appeal have shaped the history of Azimut as a leader in the field of nautical innovation as well as its commitment to the creation of a sustainable-oriented and attentive company culture today.

An ambitious and personal touch that has allowed Azimut to grow and evolve on both levels, embracing the challenge of a future nurtured by an eco-conscious approach to boat construction and by an authentic focus and responsibility on human well-being.





OUR ECO-YACHTING PHILOSOPHY

The Azimut I Benetti Group has made tangible investments to guide the Technical as well as the R&D departments toward the construction of yachts with a diminished environmental impact. Its main areas of intervention have focused on significantly lowering fuel consumption and CO2 emissions through the development of highly efficient hull designs, innovative propulsion systems and an extensive use of carbon fiber to decrease yacht weight.



A SAFE AND HEALTHY WORK ENVIRONMENT

The forerunning shipyard of Avigliana was the first of the company's Italian shipyards to obtain the ISO 45001 certification in 2011, attesting its rigorous abidance to all occupational health and safety requirements. Recognized as the most technologically-advanced shipyard in Europe, it has also led the nautical sector revolution in terms of being among the earliest adopters of the vacuum infusion process to drive resin into a laminate, avoiding styrene emissions and therefore guaranteeing its precious workers a healthier setting.

As of 2013, all the other Italian production sites have adapted to meet the necessary requirements to obtain the ISO 45001 certification.



A GLOBALLY-CONNECTED DEALER AND SERVICE NETWORK

5 SHIPYARDS

6 DIRECT OFFICES

138 OFFICIAL DEALERS

80 COUNTRIES

The highly widespread commercial network put in place by Azimut Yachts, allows the company to offer a continuous presence to its ship owners, concretely curating their demands by meeting their most specific needs.

Find your Dealer →

THE LARGEST PRIVATE GROUP IN THE YACHTING WORLD

Azimut is part of the Azimut | Benetti Group, the biggest private player and shipbuilder in the nautical sector today. The Vitelli family, the founder and majority shareholder of the company, has been leading the way for over fifty years now, continuing to innovate through the Group’s main yacht brands, Azimut and Benetti, while developing a variety of service brands to cater to the different demands of ship owners worldwide.



OUR SHIPYARDS MAKE US PROUD

Avigliana — Italy

HQ / SHIPYARD

Savona — Italy

DELIVERY CENTRE

Viareggio — Italy

SHIPYARD / STYLING LOUNGE

Fano — Italy

SHIPYARD

Itajaí — Brazil

SHIPYARD



CONCEPT & DESIGN: APART
PHOTOS: GIOVANNI MALGARINI, ALESSANDRO GUERRIERI

AZIMUT YACHTS THANKS: DEDAR, APR LUXURY LINEN , BESANA
CARPET LAB, LUXURY WOOD, SANTA&COLE, WALL LAMP, &TRADITION,
HERMES, SINGAPUR, PAOLA PERONETTO

OFFICIAL PARTNERS



GARMIN

NAVICO
GROUP

Raymarine

SEAKEEPER

VOLVO
PENTA

AZIMUT | BENETTI SPA
VIA MARTIN LUTHER KING, 9
10051 AVIGLIANA, TORINO
ITALY

RELEASE 5.25

This brochure in no way constitutes a contract of sale for the boatyard’s vessels to any person or company. All information contained herein, including but not limited to technical and performance data, illustrations, and drawings, is non-binding and for purposes of illustration only. The information in this brochure refers to the boatyard’s standard motoryacht models available as of the date of publication. Technical and descriptive information is valid only to the extent that it pertains to the specific vessel that is the subject of a purchase. Contract terms are valid only to the extent that they are contained in a contract of sale. This document is based on information available at the time of publication. Despite efforts to ensure the greatest possible accuracy, the information contained herein may fail to cover all details, omit technical or commercial changes that may have been made subsequent to publication, describe features that are not present, and fail to envisage all circumstances that might occur. Any illustrations, photographs, diagrams and examples shown in this brochure are included solely for the purposes of illustrating the text. Due to the different features of each vessel, the boatyard assumes no liability for actual use based on the illustrated applications.

^ZIMUT

azimutyachts.com

