

^ZIMUT



INDEX

01	THE DESIGN & LIFESTYLE ON BOARD	P04
02	HER MAIN TECHNICAL FEATURES	P29
03	S6 SPEC SHEET	P34
04	THE S SERIES	P39
05	ABOUT AZIMUT	P41




A one-of-a-kind beauty, enrapturing,
that steals your breath away, leaving you
speechless. An extraordinary idea as the only
possible pathway, to get to where you want,
to explore, to go beyond.
The freedom of embracing the unknown, that
you know you'll love as a part of your very own
story. A thought that provokes your mind and
then inspires you to aim for the impossible,
making mistakes, yet being brave.
A magic je ne sais quoi that enchants and
intrigues you, moving you to feel more and to
sense uniqueness.

The choice to risk it all, the one that makes you
go for it, to impress yourself and all those who
are worth it.

Welcome to Azimut.

AZIMUT.
DARE TO AMAZE.



01

THE DESIGN & LIFESTYLE ON BOARD

S6, THE BOLD DNA OF PERFORMANCE

The technologically-driven vocation of the inventive S6 is expressed through a bold yet gracefully surprising character. The eco-conscious lightness of carbon fibre, combined with the triple pod propulsion system and optimized hull flows, allow her to achieve unparalleled levels of performance, a silent presence and reduced fuel consumption. Spacious interiors with decisive lines make for a sport-oriented but welcoming lifestyle. Make the most of the ingenious S6 experience.



[The distinctive squared hullside windows are the only hint at the ample accommodations within.]



Welcome aboard, ladies and gentlemen.

Let us begin the tour.





AT ONE WITH SEA AND SKY



The external lines of the S6 are streamlined and sportive, strongly characterized by the the grilled shield that defines the head of the bow with a charm that winks at car design. The diamond-cut angular windows and low bulwarks define an unmistakable profile, writing a new design language for performance.

OPEN WIDE TO THE SKIES

The cockpit lounge embraces an external dining area and continues inside with a second lounge, which blurs the boundaries between indoors and out to create a unique environment of free movement.





[All exterior cushions are available in Batyline fabric with Dryfill padding, a combination of latest generation technical solutions extremely durable and easy to maintain, even in marine environments.]

AT ONE WITH THE SEA

The forelounge is a padded peninsula, extending sofas and sunbeds over a sheer drop down to the waves. All the outdoor lounges are emphasized by the sporty design, which sweeps back the superstructure and lowers barriers like the bulwarks for maximum exposure.



TWO VERSIONS, THE SAME SPORTY DNA

The yacht is available in an alternative sportfly version, which adds an upper deck for driving in the open air, plus an additional sunbathing area.





[A drop-down stair elegantly elevates guests to the sportfly.]



A UNIQUELY CONNECTED MAIN DECK

The flush transition between indoors and out blurs the boundaries of their respective lifestyles, creating a spectrum from sea to shelter on the main deck. From the aft sunbathing to the partially covered, partially windscreened cockpit, to the skylit lounge within, there is a perfect spot to spend each moment.





DESIGNED TO WELCOME

The main lounge centerpiece is a high-low coffee table, which can expand to serve as the main indoor dining in its raised position. An abundance of natural light shines through the glass.







[The forward galley preserves the benefits of the wide windows with half-height furnishings, extended to wrap around and seclude the food preparation area.]





MODERN COMFORTS IN A SPORTY PACKAGE

Dynamic design elements permeate the interiors with a futuristic feeling, adding to the sense of sophisticated relaxation.

Now, let us discover the guest accommodations.

Shall we?





[The squared windows lend a unique charm to the master suite, which is designed to shine under the flood of natural light that follows. The bed leaves full-height walking room from front to back, with a closet and an ensuite bathroom.]





THE ART OF HOSPITALITY

The VIP suite in the bow boasts an ample accommodation for two, with a queen-sized bed and walking room on both sides to comfortably access the twin closets.



[The wide hullside windows work with the contrasting colors and reflective surfaces to expand the perception of space.]

[The double cabin is surprisingly generous with plenty of full-height walking room, storage and a direct access to the day head.]





02

HER MAIN TECHNICAL FEATURES

The beauty of the S6 is not solely a matter of exterior and interior design elements that combine to perfectly play out Azimut's essence. Her beauty is also about discovering the technological advancements and special components that contribute to making her truly unique and highly innovative.



LOW EMISSION YACHT



TRIPLE POD PROPULSION COMBINED WITH CARBON FIBER

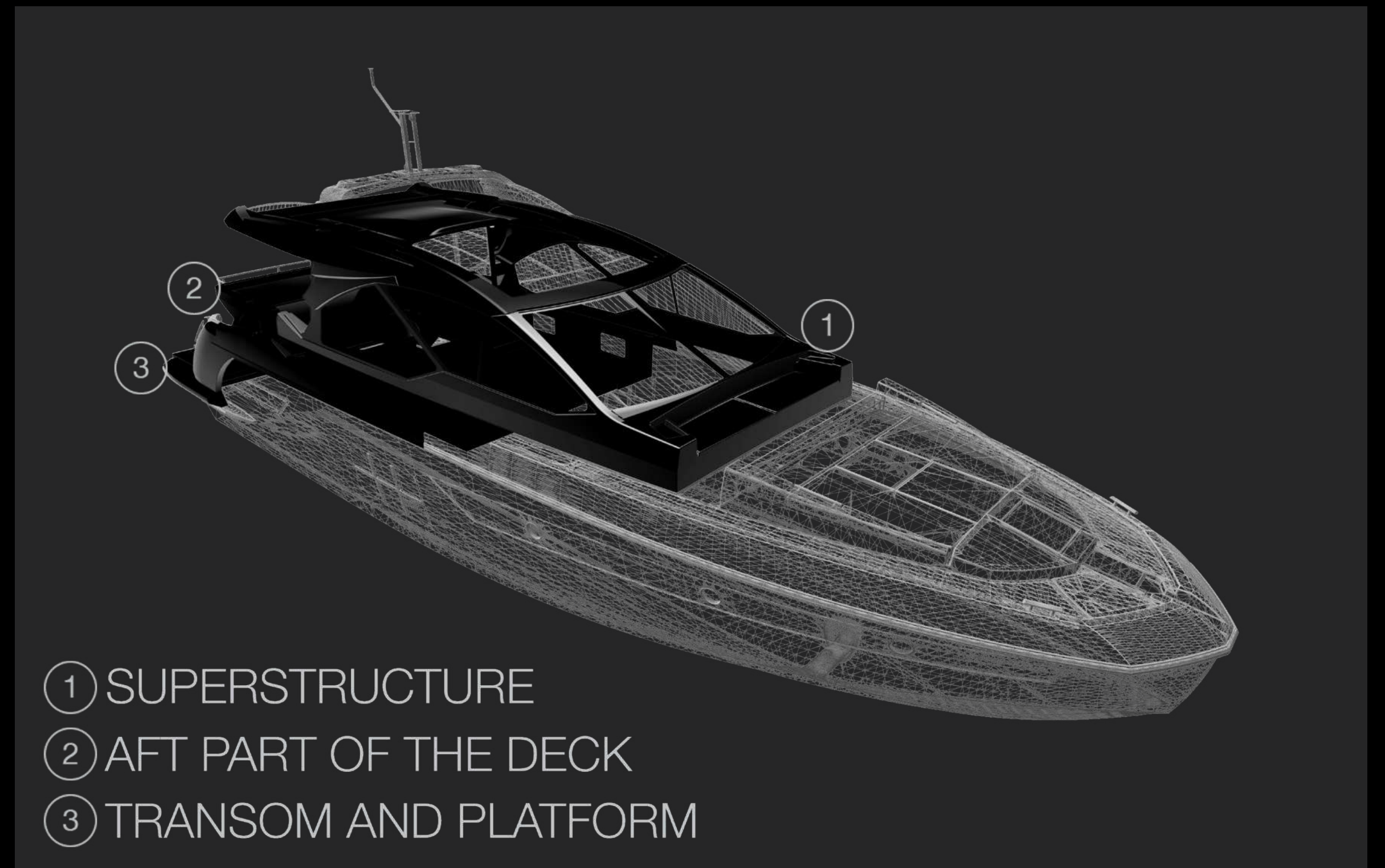
The adoption of triple Pod propulsion, combined with the optimization of the water lines and the extensive use of carbon fiber, reduces fuel consumption and CO₂ emissions by 20 to 30%* in the main speed range.

*compared to vessels of the same weight and size with a traditional hard-chine hull and shaft line propulsion



CARBON-TECH GENERATION

Azimut's pioneering use of carbon fiber lamination goes beyond pure performance. The Carbon Tech Generation offers expanded volumes on board, while maintaining excellent dynamic stability and perfect handling. Preserving the yacht's low center of gravity, the carbon fiber was focused on the upper parts of the yacht, lightening the laminated components by up to 30% and reducing the natural roll momentum up to 15%.



JOYSTICK DRIVING

The Joystick acts as an analog for the yacht, offering intuitive, one-handed control in every situation. When the yacht is stopped, moving the Joystick forward or back, side to side, and twisting clockwise or counter-clockwise activates the engines to mimic that motion. It's the easiest way to pull off precise maneuvers. When Joystick Driving is activated, the autopilot is immediately engaged. For easy course correction, the driver may briefly twist the Joystick for 1 degree in that direction or twist and hold for 10 degrees. The Autopilot keeps a forward course after the Joystick is released.



03

S6 SPEC SHEET

GENERAL CHARACTERISTICS

LENGTH OVERALL	18 m	59’ 1”
BEAM MAX	4,75 m	15’ 7”
DRAFT	1,61 m	5’ 3”
DISPLACEMENT	29,5 / 29,8 t	65036 / 65697 lb
MOTORIZZAZIONE / ENGINES	3 x VOLVO IPS 700 D8 550 hp	
MAXIMUM SPEED	up to 34 kn	
CRUISING SPEED	up to 29 kn	
KEEL	Deadrise 15,5° at transome 21,2 midship	
FUEL CAPACITY	2600 l	686 US Gal
WATER CAPACITY	590 l	156 US Gal
CABINS	3 + 1 crew	
BERTHS	6 + 1 crew	
HEAD COMPARTMENTS	2 + 1 crew	
BUILDING MATERIAL	Carbon Fibre + GRP	
EXTERIOR STYLING & CONCEPT	Stefano Righini	
INTERIOR DESIGNER	Francesco Guida	
BUILDER	Azimut Yachts	
HULL DESIGNER	P.L. AUSONIO Naval Architecture & Azimut R&D Dept.	
CERTIFICATIONS	CE A; NMMA	

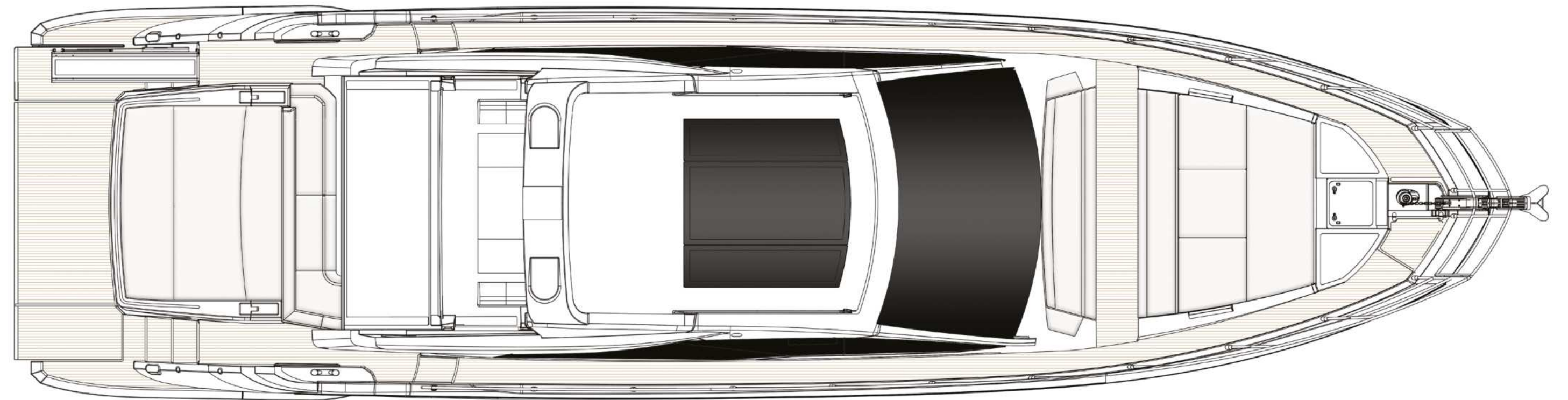
*Sportfly version
Last updated 08.2022
Please consult your dealer for the latest specifications.

UNI ISO 8666
The performance described applies to a vessel with standard configuration (standard equipment installed) and a clean hull, propellers, and rudder. It is also noted that the performance described was recorded under favourable sea and wind conditions (Beaufort scale index 1, Douglas scale index 1); different and worse sea conditions could significantly impact performance.

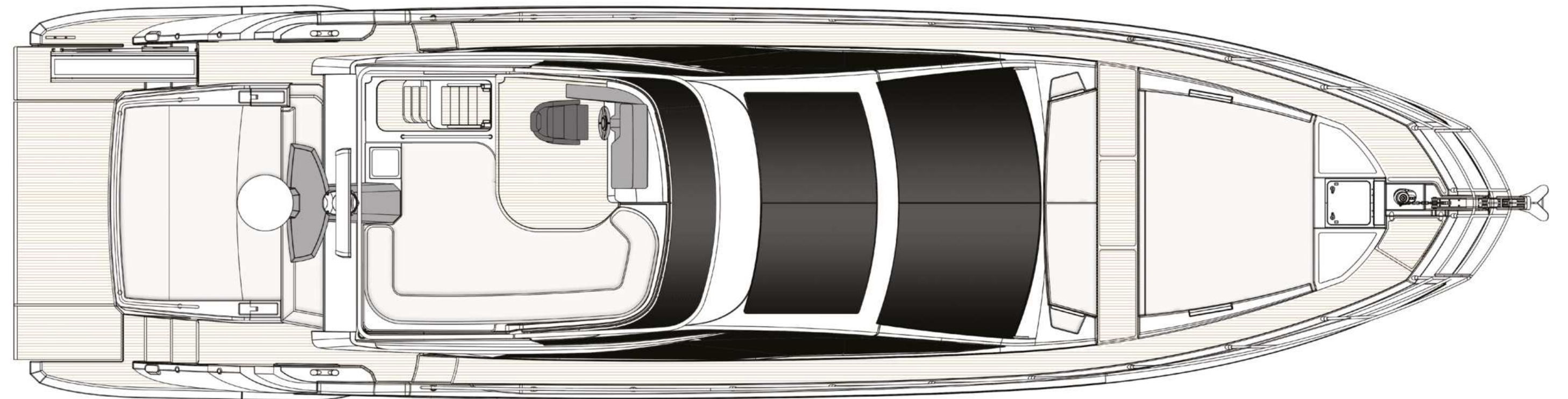
CE MARK
Given the continual evolution of technology, Azimut | Benetti S.p.A reserves the right to modify the technical specifications on its vessels at any time and without prior notice.

ABOVE VIEW

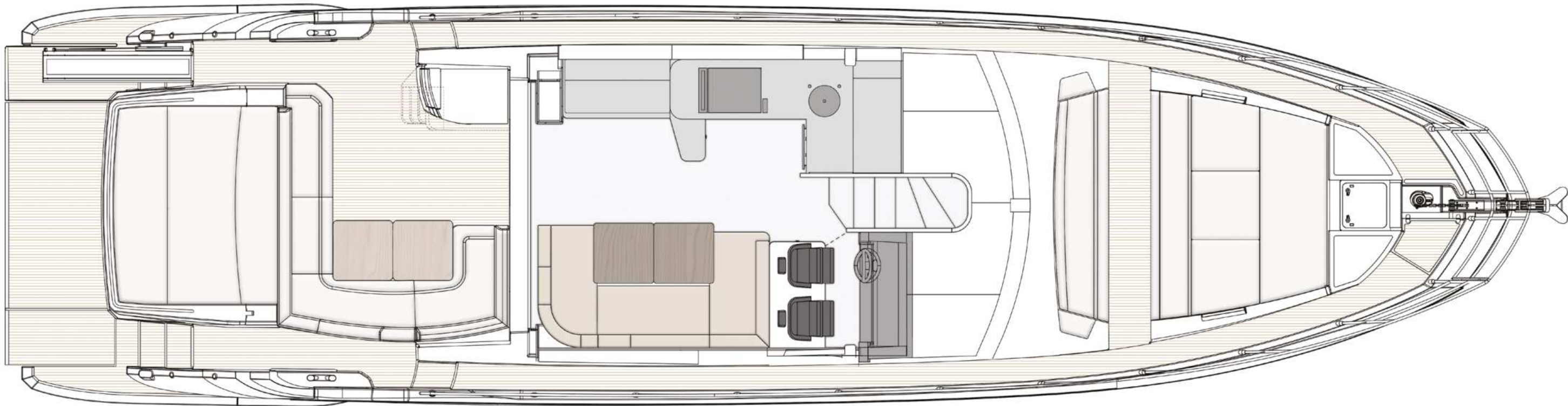
TOP VIEW - COUPÉ VERSION



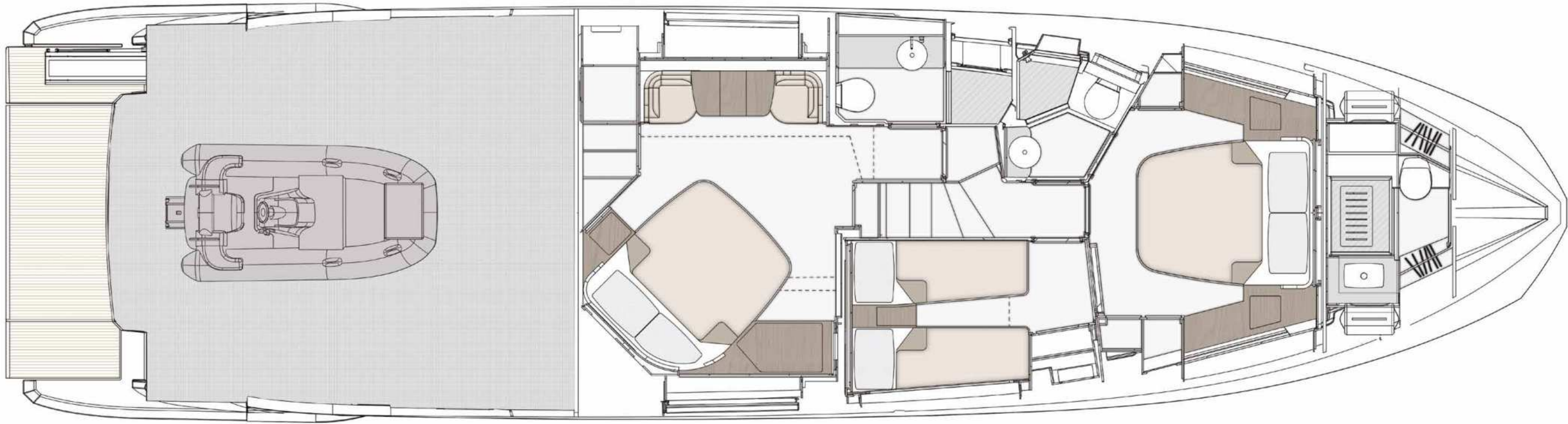
FLYBRIDGE - SPORT FLY VERSION



MAIN DECK



LOWER DECK



04

THE SERIES S

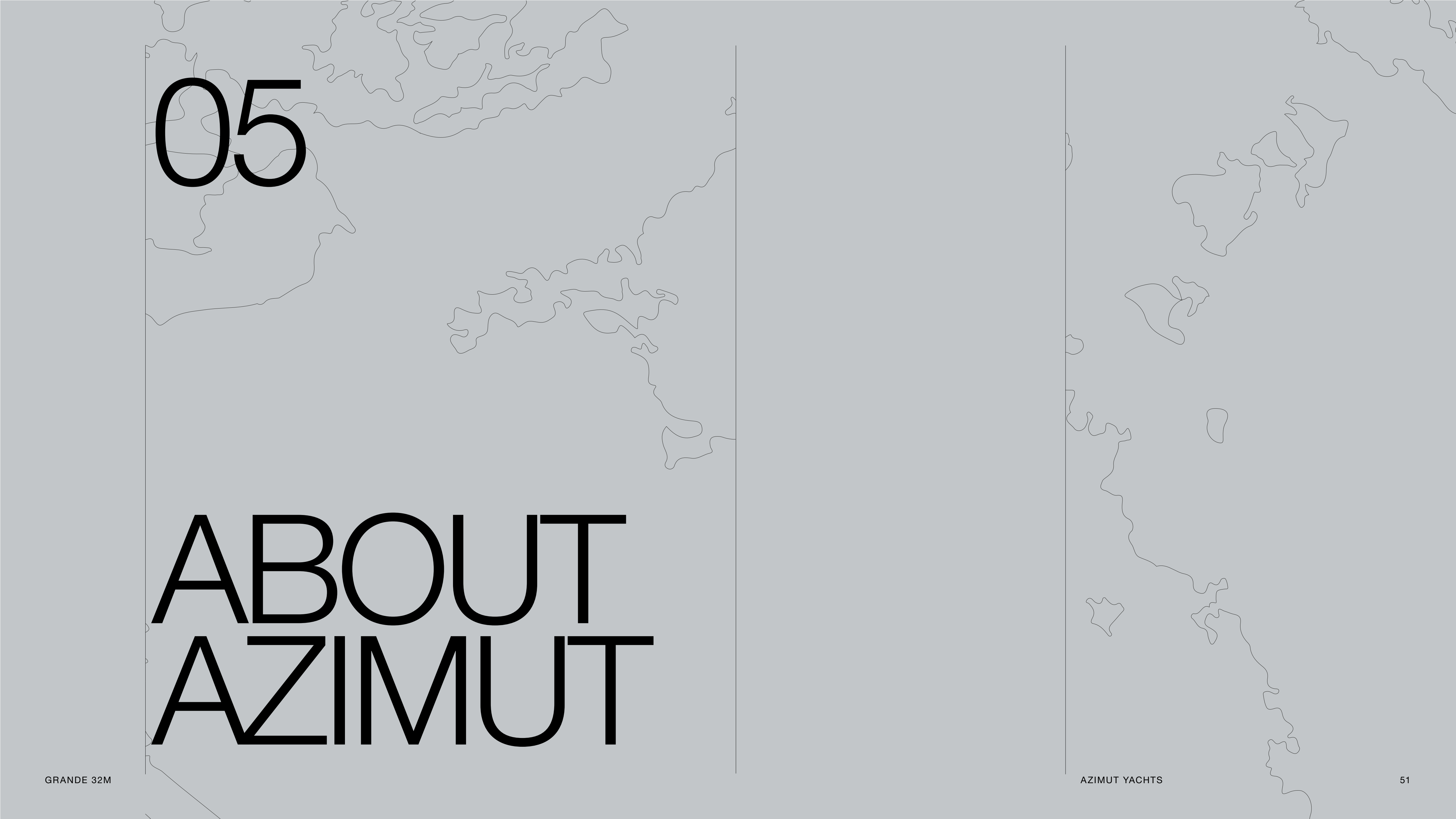
AVANT-GARDE INTELLIGENCE

The seductively sportive Azimut S Series is the market's pinnacle of technological advancement and performance. Sensually streamlined exteriors make for a fiercely dynamic aesthetic, combining with innovative propulsion systems and last generation hulls to deliver a uniquely sporty experience. Daringly fusing high speed and extreme manoeuvrability with the lowest consumption of fuel achievable in its class, the S Series also makes extensive use of carbon fiber on its yachts to grant vast volumes without impacting on weight, therefore offering unanticipated ample living spaces.

Embrace the beauty of avant-garde intelligence.

S6
S7
S8
S10





05

ABOUT AZIMUT



A FAMILY-MADE COMPANY CULTURE

An immense and personal passion for the sea. A clear and forward-facing attitude. A strong and relentless work ethic. Since 1969, Paolo Vitelli, the creative visionary founder and businessman behind Azimut, has been set on challenging the industry's status quo with a daring desire: bring to life an unexpected nautical experience, through yachts built to combine alluring aesthetics with construction expertise and impeccable technology.

An audacious mindset that has, over time, surprised and captivated the yachting sector, transforming Azimut into a bold and recognizable benchmark, and laying the foundation for the birth of the largest megayacht builder in the world, the Azimut | Benetti Group.

The international and management-based standing of the company today, is deeply nourished by the solid and memorable family heritage that has distinguished it from the beginning. A historically pioneering vision that enables it to continue thriving day after day, through ingenious inventions and long-term goals that look to the future with Paolo's daughter, Giovanna Vitelli.

A SUSTAINABLE VISION TODAY, FOR TOMORROW

An avant-garde vision and a strong emotional appeal have shaped the history of Azimut as a leader in the field of nautical innovation as well as its commitment to the creation of a sustainable-oriented and attentive company culture today.

An ambitious and personal touch that has allowed Azimut to grow and evolve on both levels, embracing the challenge of a future nurtured by an eco-conscious approach to boat construction and by an authentic focus and responsibility on human well-being.





OUR ECO-YACHTING PHILOSOPHY

The Azimut I Benetti Group has made tangible investments to guide the Technical as well as the R&D departments toward the construction of yachts with a diminished environmental impact. Its main areas of intervention have focused on significantly lowering fuel consumption and CO2 emissions through the development of highly efficient hull designs, innovative propulsion systems and an extensive use of carbon fiber to decrease yacht weight.



A SAFE AND HEALTHY WORK ENVIRONMENT

The forerunning shipyard of Avigliana was the first of the company's Italian shipyards to obtain the ISO 45001 certification in 2011, attesting its rigorous abidance to all occupational health and safety requirements. Recognized as the most technologically-advanced shipyard in Europe, it has also led the nautical sector revolution in terms of being among the earliest adopters of the vacuum infusion process to drive resin into a laminate, avoiding styrene emissions and therefore guaranteeing its precious workers a healthier setting.

As of 2013, all the other Italian production sites have adapted to meet the necessary requirements to obtain the ISO 45001 certification.



A GLOBALLY-CONNECTED DEALER AND SERVICE NETWORK

5 SHIPYARDS

6 DIRECT OFFICES

138 OFFICIAL DEALERS

80 COUNTRIES

The highly widespread commercial network put in place by Azimut Yachts, allows the company to offer a continuous presence to its ship owners, concretely curating their demands by meeting their most specific needs.

Find your Dealer →



THE LARGEST PRIVATE GROUP IN THE YACHTING WORLD

Azimut is part of the Azimut | Benetti Group, the biggest private player and shipbuilder in the nautical sector today. The Vitelli family, the founder and majority shareholder of the company, has been leading the way for over fifty years now, continuing to innovate through the Group's main yacht brands, Azimut and Benetti, while developing a variety of service brands to cater to the different demands of ship owners worldwide.



OUR SHIPYARDS MAKE US PROUD

Avigliana — Italy

HQ / SHIPYARD

Savona — Italy

DELIVERY CENTRE

Viareggio — Italy

SHIPYARD / STYLING LOUNGE

Fano — Italy

SHIPYARD

Itajaí — Brazil

SHIPYARD



CONCEPT & DESIGN: APART
PHOTOS: ALESSANDRO GUERRIERI, SARA MAGNI

AZIMUT YACHTS THANKS:
APR LUXURY LINEN, DEDAR, FRETTE, MARIO LUCA GIUSTI, TOM DIXON, JO MALONE

OFFICIAL PARTNERS



GARMIN

NAVICO
GROUP

Raymarine

SEAKEEPER

VOLVO
PENTA

AZIMUT | BENETTI SPA
VIA MARTIN LUTHER KING, 9
10051 AVIGLIANA, TORINO
ITALY

RELEASE 01.24

This brochure in no way constitutes a contract of sale for the boatyard’s vessels to any person or company. All information contained herein, including but not limited to technical and performance data, illustrations, and drawings, is non-binding and for purposes of illustration only. The information in this brochure refers to the boatyard’s standard motoryacht models available as of the date of publication. Technical and descriptive information is valid only to the extent that it pertains to the specific vessel that is the subject of a purchase. Contract terms are valid only to the extent that they are contained in a contract of sale. This document is based on information available at the time of publication. Despite efforts to ensure the greatest possible accuracy, the information contained herein may fail to cover all details, omit technical or commercial changes that may have been made subsequent to publication, describe features that are not present, and fail to envisage all circumstances that might occur. Any illustrations, photographs, diagrams and examples shown in this brochure are included solely for the purposes of illustrating the text. Due to the different features of each vessel, the boatyard assumes no liability for actual use based on the illustrated applications.

^ZIMUT

azimutyachts.com

