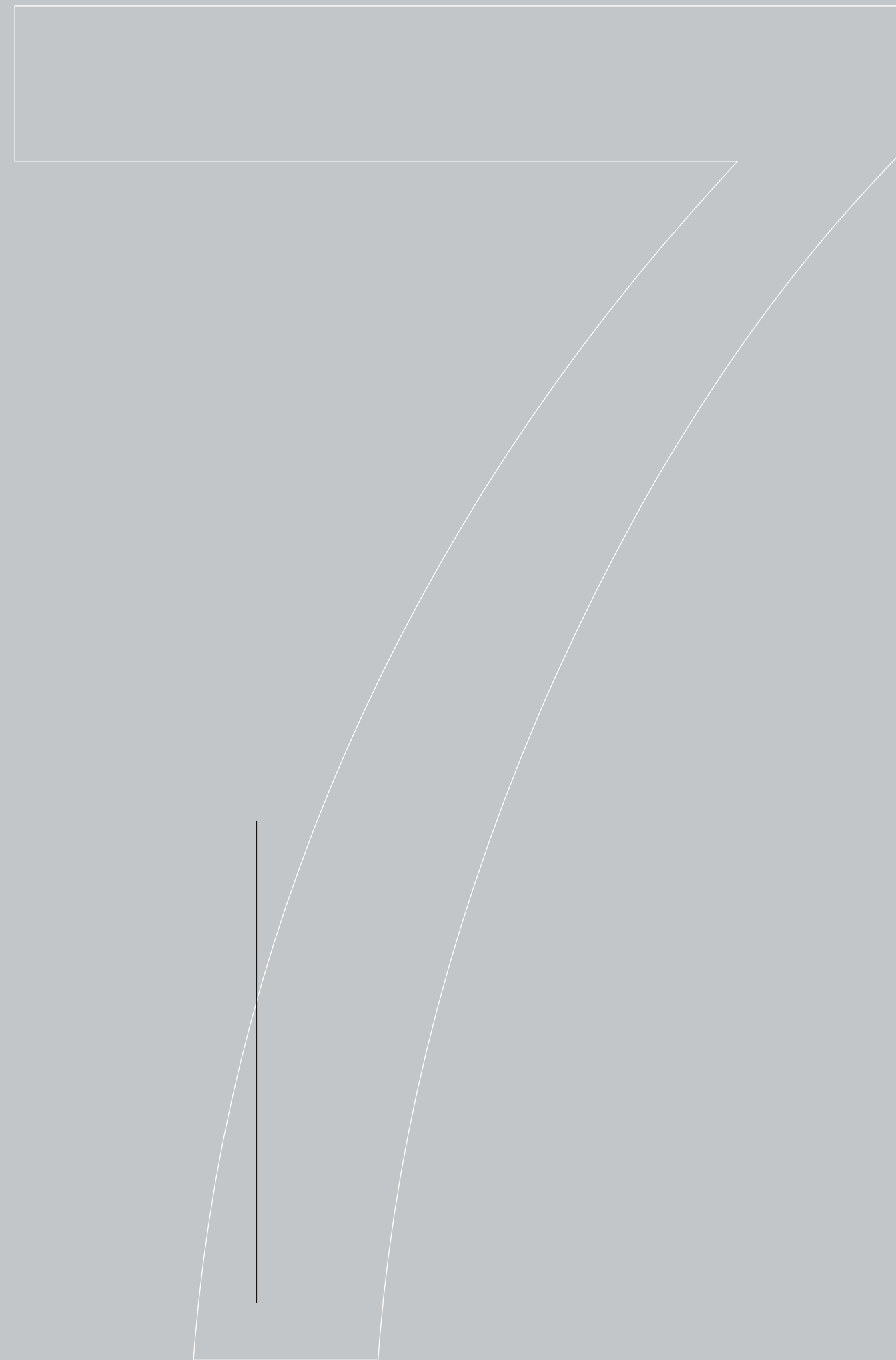


^ZIMUT



INDEX

01	THE DESIGN & LIFESTYLE ON BOARD	P04
02	HER MAIN TECHNICAL FEATURES	P33
03	FLY 72 SPEC SHEET	P34
04	THE FLY SERIES	P39
05	ABOUT AZIMUT	P41




A one-of-a-kind beauty, enrapturing,
that steals your breath away, leaving you
speechless. An extraordinary idea as the only
possible pathway, to get to where you want,
to explore, to go beyond.
The freedom of embracing the unknown, that
you know you'll love as a part of your very own
story. A thought that provokes your mind and
then inspires you to aim for the impossible,
making mistakes, yet being brave.
A magic je ne sais quoi that enchants and
intrigues you, moving you to feel more and to
sense uniqueness.

The choice to risk it all, the one that makes you
go for it, to impress yourself and all those who
are worth it.

Welcome to Azimut.

AZIMUT.
DARE TO AMAZE.



01

THE DESIGN & LIFESTYLE ON BOARD

FLY 72, A NEW EQUILIBRIUM

Aspiring to authentic nautical harmony, the Fly 72 balances cloud-like comfort on knife's edge naval architecture. The pursuit of perfect proportions diffuses a gentle transversality across the onboard environments, with distinctive design details echoing throughout the surrounding spaces. Between the refined hull shape, carbon fiber construction and powerful propulsion, the sportiness of the experience defies the expanding volumes for hosting.

Experience a new equilibrium aboard the Fly 72.





Welcome aboard, ladies and gentlemen.

Let us begin the tour.





CRAVING THE CUTTING EDGE



The Fly 72 enriches the Fly Series, the iconic Azimut line that recalls the revolutionary spirit of the past for the avant-garde of tomorrow, offering the timeless emotion of gliding over the waves, suspended between sky and sea in absolute freedom.



FLY HIGH

The fly offers every al fresco attraction, from the sun lounge by the helm station to the dining table opposite the sprawling American bar, rounding off over the stern with an open area, ready for any use. Sunshades and built-in refrigeration ensure hospitable hosting all day long, with the best views on board.









SUPERIOR SERVICE RAISING THE BAR

The American bar on the flybridge brings service, and therefore hosting, to a whole new level. While guests enjoy the sunbathing, dining and open-ended aft areas throughout the day, the crew moves discretely along their own path on the starboard side to access the helm and bar.





Skippers, including owner operators, appreciate the clean and complete helm station on the flybridge ensures optimal visibility. The suite of electronic monitoring and control systems ensures constant oversight and the utmost safety for all guests on board.









[The connection between inside and outside is just another dimension of the harmonious approach to design aboard the Fly 72.]

EQUILIBRIUM WITHIN

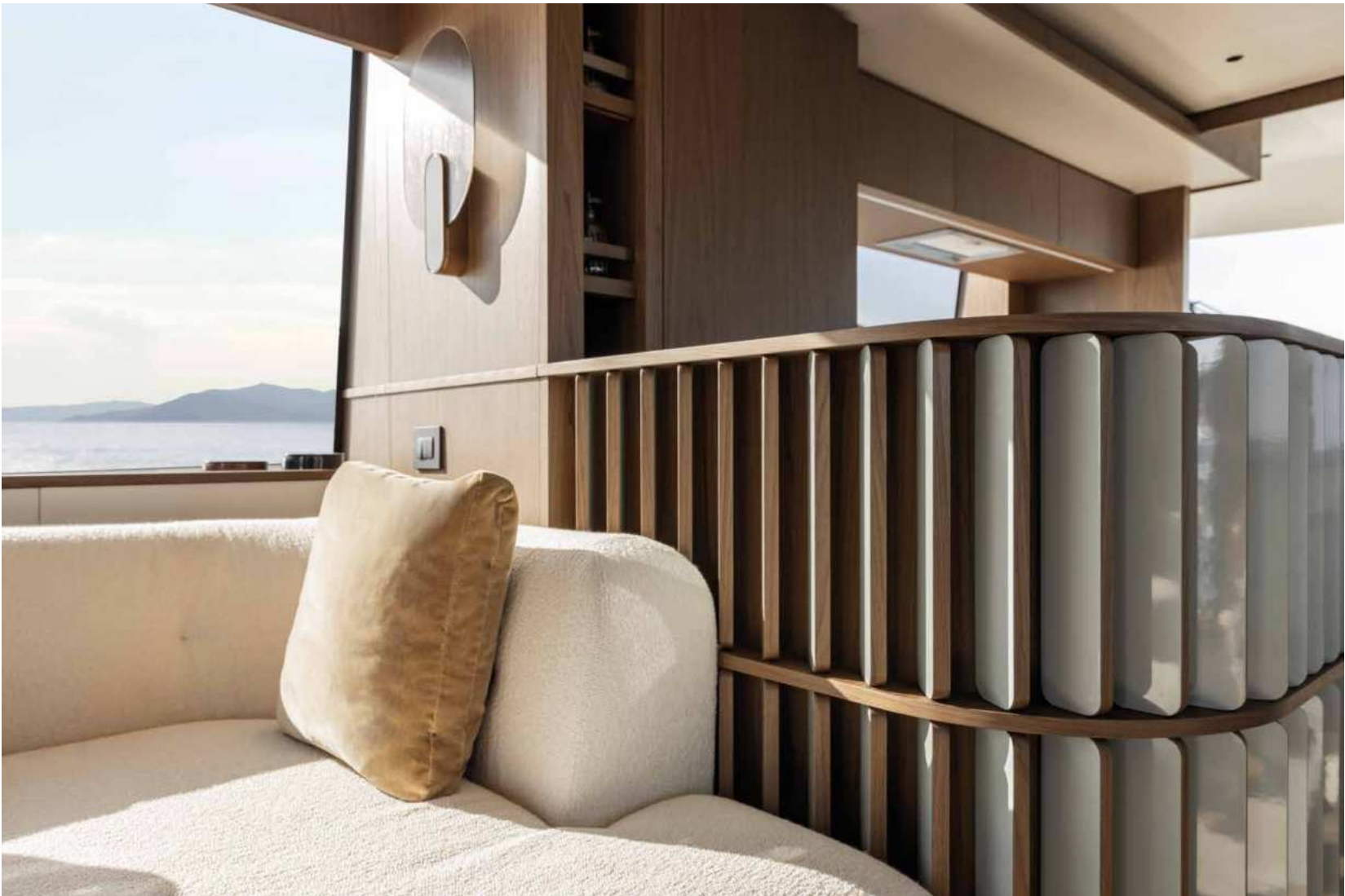
The interiors are designed with a transversal stylistic line, which runs from the exclusive atmospheres of the nautical world to the refinement of contemporary design. These two worlds meet in the project, creating imagery inspired by the masters of Italian design of the last century to reinterpret iconic details and define a new and unique style. The transversal design is also evident in the choice of materials and shapes: wood combined with precious materials such as bronze and glossy lacquers, and shapes balanced between linearity and softness.





BRIGHT, OPEN AND AIRY

From the aft entrance, a series of spaces follow in sequence to provide lounging close by the cockpit, amidships a galley and dining area and forward the helm and an additional dinette. The design of the galley walls creates a beautiful effect when walking by, though the pastel color prevents it from outshining other elements, like the custom lighting and furniture.





[The unexpected dinette completes the forepart of the main deck, offering a glass-enclosed table with diner-style seating. Extending overhead, the windshield bathes the elevated enclave in light, spotlighting it for breakfast. The dinette's position between the galley, helm and side door is ideal for a crew mess, clear of the guest dining and lounging areas. For professional catering, the galley may be enclosed with full-height walls and a sliding door, maximizing peace and privacy.]



Now, let us discover the guest accommodations.

Shall we?



A SANCTUM OF RELAXATION

Asymmetrical design elements, pastel colors and natural, tactile materials create a sense of tranquility seldom felt even at home. The private bathroom and walk-in closet ensure the utmost comfort for extended stays at sea, with a vanity desk and chaise longue to starboard and storage to port.







A COZY NICHE



The double cabins take advantage of the asymmetrical design theme on board as well, with even the orientation of the beds, the headboards and the decorations defying classical standards for an avant-garde appeal. Significant standing room and the mirrored wardrobe make dressing a breeze, as well as accessing the abundance of personal storage.

[The hull-side window spans the full length of the beds, creating a sense of openness to the sea below deck.]

[The twin-bed cabin, with its private bathroom, also features the same asymmetrical design theme as all the sleeping areas on board.]



02

HER MAIN TECHNICAL FEATURES

The beauty of the Fly 72 is not solely a matter of exterior and interior design elements that combine to perfectly play out Azimut's essence. Her beauty is also about discovering the technological advancements and special components that contribute to making her truly unique and highly innovative.



03

FLY 72 SPEC SHEET

GENERAL CHARACTERISTICS

LENGTH OVERALL (INCL. PULPIT)	22,64 m	74’ 3”
BEAM MAX	5,62 m	18’ 5”
DRAFT	1,82 m	5’ 12”
DISPLACEMENT	53,3 t	117505 lb
ENGINES	2 x MAN V12 1400 hp	
MAXIMUM SPEED	up to 32 knots	
CRUISING SPEED	up to 26 knots	
KEEL	deadrise 15° aft and 20° amidships	
FUEL CAPACITY	5200 l	1374 US Gal
WATER CAPACITY	1100 l	291 US Gal
CABINS	4 + 1 crew	
BERTHS	8 + 2 crew	
HEAD COMPARTMENTS	4 + 1 crew	
BUILDING MATERIALS	GRP + Carbon Fibre	
EXTERIOR DESIGNER	Alberto Mancini	
INTERIOR DESIGNER	Fabio Fantolino	
HULL DESIGNER	P. L. AUSONIO Naval Architecture & Azimut R&D Dept.	
BUILDER	Azimut Yachts	
CERTIFICATIONS	CE A; NMMA	

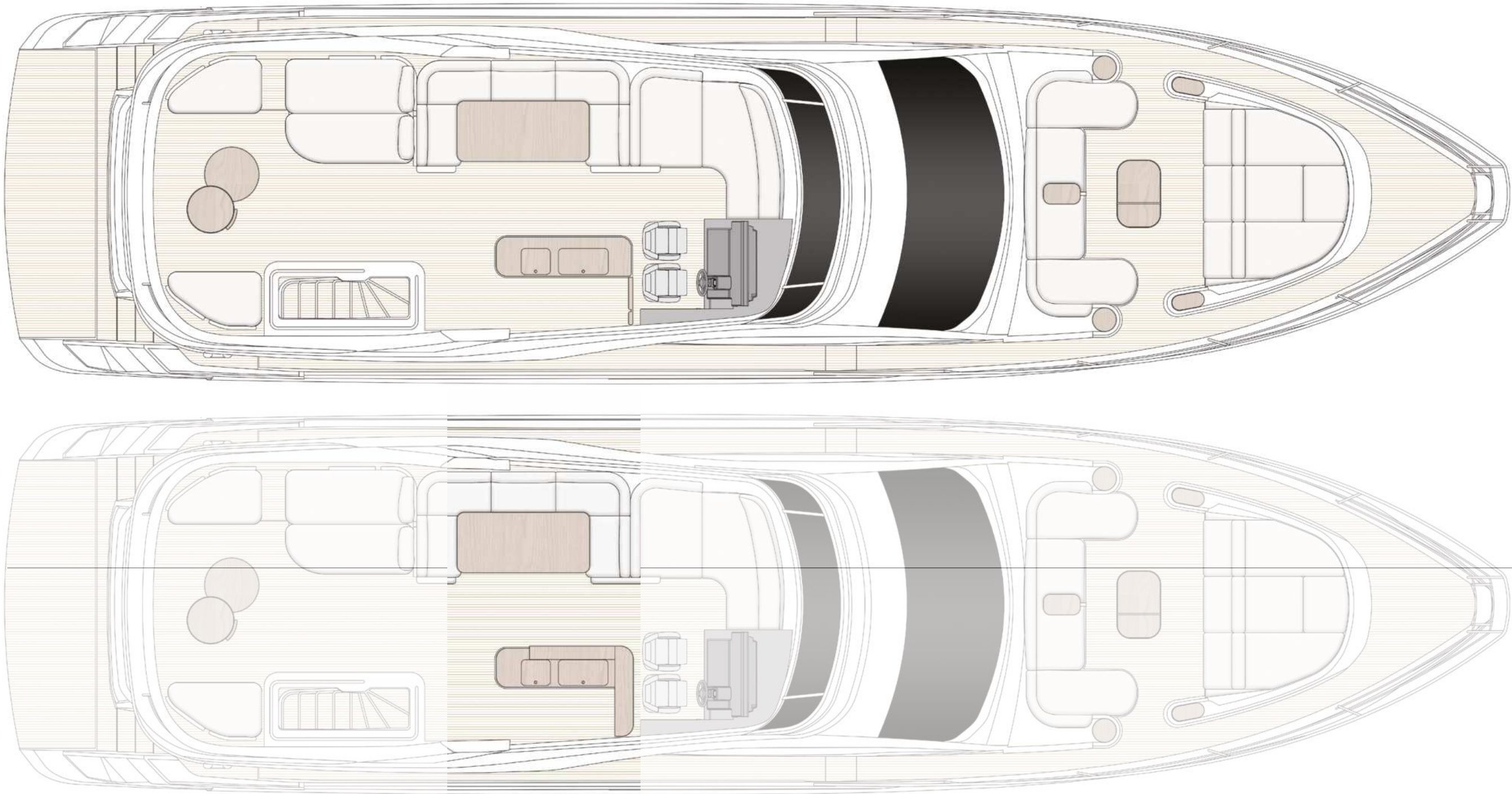
Last updated 05.2024
Please consult your dealer for the latest specifications.

UNI ISO 8666
The performance described applies to a vessel with standard configuration (standard equipment installed) and a clean hull, propellers, and rudder. It is also noted that the performance described was recorded under favourable sea and wind conditions (Beaufort scale index 1, Douglas scale index 1); different and worse sea conditions could significantly impact performance.

CE MARK
Given the continual evolution of technology, Azimut | Benetti S.p.A reserves the right to modify the technical specifications on its vessels at any time and without prior notice.

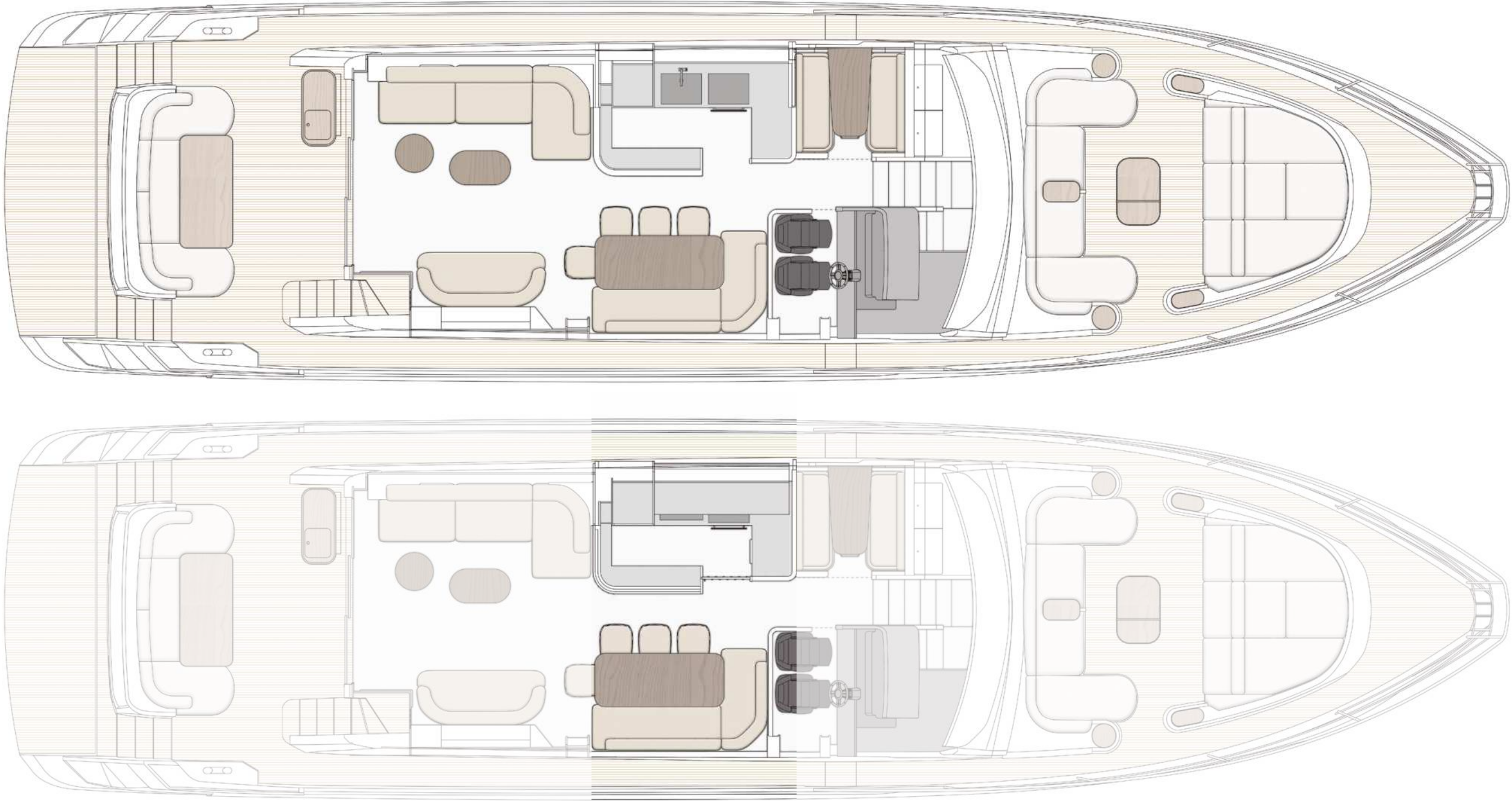
FLYBRIDGE

LIFT
TV 42" OPT

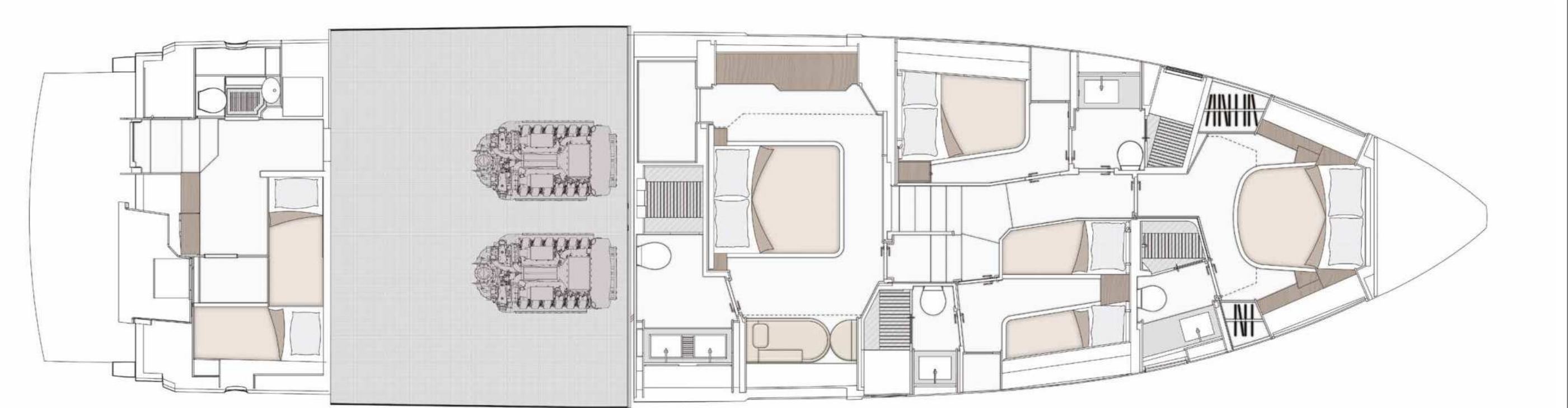


MAIN DECK

ENCLOSED
GALLEY



LOWER DECK





04

THE FLY SERIES

A VISUALLY IMMERSIVE EXPERIENCE

A barrierless and illuminated experience, the iconic Flybridge boat series was forged out of tradition to immerse its guests in the sea, while inspiring the unique feeling of open-air freedom.

Sleek and spacious all-Italian interiors are bound to create a sensational atmosphere, filling days and nights with charming comfort and lightness.

Experience yesterday's game-changer spirit upped by today's avant-garde air.

50
53
60
68
72
78



05

ABOUT AZIMUT



A FAMILY-MADE COMPANY CULTURE

An immense and personal passion for the sea. A clear and forward-facing attitude. A strong and relentless work ethic. Since 1969, Paolo Vitelli, the creative visionary founder and businessman behind Azimut, has been set on challenging the industry's status quo with a daring desire: bring to life an unexpected nautical experience, through yachts built to combine alluring aesthetics with construction expertise and impeccable technology.

An audacious mindset that has, over time, surprised and captivated the yachting sector, transforming Azimut into a bold and recognizable benchmark, and laying the foundation for the birth of the largest megayacht builder in the world, the Azimut | Benetti Group.

The international and management-based standing of the company today, is deeply nourished by the solid and memorable family heritage that has distinguished it from the beginning. A historically pioneering vision that enables it to continue thriving day after day, through ingenious inventions and long-term goals that look to the future with Paolo's daughter, Giovanna Vitelli.

A SUSTAINABLE VISION TODAY, FOR TOMORROW

An avant-garde vision and a strong emotional appeal have shaped the history of Azimut as a leader in the field of nautical innovation as well as its commitment to the creation of a sustainable-oriented and attentive company culture today.

An ambitious and personal touch that has allowed Azimut to grow and evolve on both levels, embracing the challenge of a future nurtured by an eco-conscious approach to boat construction and by an authentic focus and responsibility on human well-being.





OUR ECO-YACHTING PHILOSOPHY

The Azimut I Benetti Group has made tangible investments to guide the Technical as well as the R&D departments toward the construction of yachts with a diminished environmental impact. Its main areas of intervention have focused on significantly lowering fuel consumption and CO2 emissions through the development of highly efficient hull designs, innovative propulsion systems and an extensive use of carbon fiber to decrease yacht weight.



A SAFE AND HEALTHY WORK ENVIRONMENT

The forerunning shipyard of Avigliana was the first of the company's Italian shipyards to obtain the ISO 45001 certification in 2011, attesting its rigorous abidance to all occupational health and safety requirements. Recognized as the most technologically-advanced shipyard in Europe, it has also led the nautical sector revolution in terms of being among the earliest adopters of the vacuum infusion process to drive resin into a laminate, avoiding styrene emissions and therefore guaranteeing its precious workers a healthier setting.

As of 2013, all the other Italian production sites have adapted to meet the necessary requirements to obtain the ISO 45001 certification.



A GLOBALLY-CONNECTED DEALER AND SERVICE NETWORK

5 SHIPYARDS

6 DIRECT OFFICES

138 OFFICIAL DEALERS

80 COUNTRIES

The highly widespread commercial network put in place by Azimut Yachts, allows the company to offer a continuous presence to its ship owners, concretely curating their demands by meeting their most specific needs.

Find your Dealer →



THE LARGEST PRIVATE GROUP IN THE YACHTING WORLD

Azimut is part of the Azimut | Benetti Group, the biggest private player and shipbuilder in the nautical sector today. The Vitelli family, the founder and majority shareholder of the company, has been leading the way for over fifty years now, continuing to innovate through the Group's main yacht brands, Azimut and Benetti, while developing a variety of service brands to cater to the different demands of ship owners worldwide.



OUR SHIPYARDS MAKE US PROUD

Avigliana — Italy

HQ / SHIPYARD

Savona — Italy

DELIVERY CENTRE

Viareggio — Italy

SHIPYARD / STYLING LOUNGE

Fano — Italy

SHIPYARD

Itajaí — Brazil

SHIPYARD





CONCEPT & DESIGN: APART
PHOTOS: GIOVANNI MALGARINI, ALESSANDRO GUERRIERI

AZIMUT YACHTS THANKS: APR LUXURY LINEN, LORO PIANA,
RIZZOLI, GUMDESIGN, BETTISATTI, SALVATORI, PINETTI,
GIOBAGNARA, GARDECO, RIVIERA, STINE JESPERSEN.

OFFICIAL PARTNERS



AZIMUT | BENETTI SPA
VIA MARTIN LUTHER KING, 9
10051 AVIGLIANA, TORINO
ITALY

RELEASE 01.24

This brochure in no way constitutes a contract of sale for the boatyard's vessels to any person or company. All information contained herein, including but not limited to technical and performance data, illustrations, and drawings, is non-binding and for purposes of illustration only. The information in this brochure refers to the boatyard's standard motoryacht models available as of the date of publication. Technical and descriptive information is valid only to the extent that it pertains to the specific vessel that is the subject of a purchase. Contract terms are valid only to the extent that they are contained in a contract of sale. This document is based on information available at the time of publication. Despite efforts to ensure the greatest possible accuracy, the information contained herein may fail to cover all details, omit technical or commercial changes that may have been made subsequent to publication, describe features that are not present, and fail to envisage all circumstances that might occur. Any illustrations, photographs, diagrams and examples shown in this brochure are included solely for the purposes of illustrating the text. Due to the different features of each vessel, the boatyard assumes no liability for actual use based on the illustrated applications.

^ZIMUT

azimutyachts.com

